

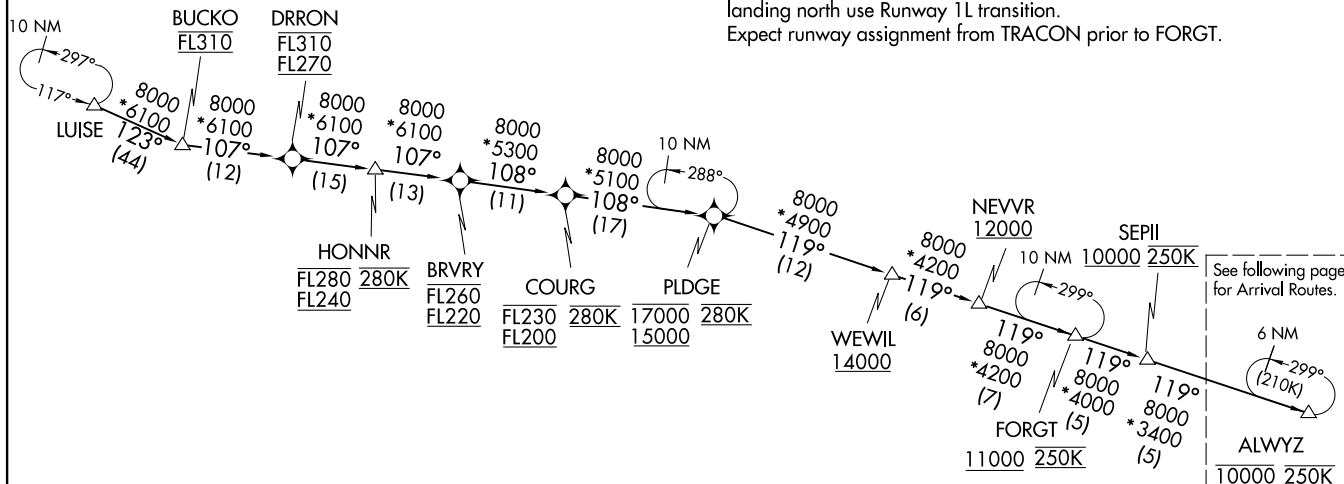
FRDMM SIX ARRIVAL (RNAV) Transition Routes
(ALWYZ.FRDMM6) 16MAY24

POTOMAC APP CON
118.675 323.175
DCA D-ATIS
132.65
ADW D-ATIS
133.675 251.05
DAA ATIS ★
128.175

RNAV-1 DME/DME/IRU or GPS.
RADAR required.

BUCKO TRANSITION (BUCKO.FRDMM6):
LUISE TRANSITION (LUISE.FRDMM6):

NOTE: Jet aircraft only.
NOTE: Turboprop aircraft as assigned by ATC only.
NOTE: PROHIBITED AREA (P-56) 1.5 NM north of KDCA -
AVOID - surface to FL180.
NOTE: Landing south at DCA use Runway 19 transition, landing
north use Runway 1 transition.
Landing south at ADW use Runway 19R transition,
landing north use Runway 1L transition.
Expect runway assignment from TRACON prior to FORGT.



(CONTINUED ON FOLLOWING PAGE)

NOTE: Chart not to scale.

FRDMM SIX ARRIVAL (RNAV) Transition Routes
(ALWYZ.FRDMM6) 24137

WASHINGTON, DC

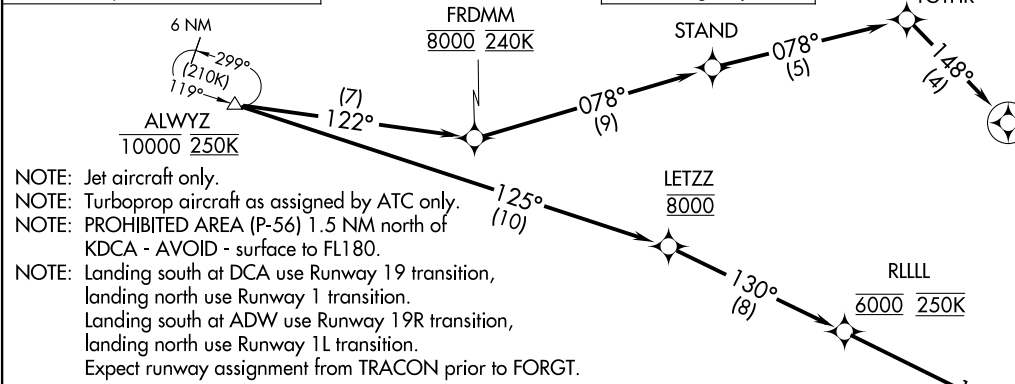
AL-443 (FAA)

ALWYZ.FRDMM6) 10MAY24

FRDMM SIX ARRIVAL (RNAV) Arrival Routes

WASHINGTON, DC

RNAV-1 DME/DME/IRU or GPS.
RADAR required.



NOTE: Jet aircraft only.
NOTE: Turboprop aircraft as assigned by ATC only.
NOTE: PROHIBITED AREA (P-56) 1.5 NM north of KDCA - AVOID - surface to FL180.
NOTE: Landing south at DCA use Runway 19 transition, landing north use Runway 1 transition.
NOTE: Landing south at ADW use Runway 19R transition, landing north use Runway 1L transition.
Expect runway assignment from TRACON prior to FORGT.

ARRIVAL ROUTE DESCRIPTION

LANDING ADW RUNWAY 1L/R: From ALWYZ on track 125° to cross LETZZ at 8000, then on track 130° to cross RLLLL at 6000 and at 250K, then on track 131° to VCTRY, then on track 189° to HEROO, then on track 189°. Expect RADAR vectors to final approach course.

LANDING ADW RUNWAY 19L/R: From ALWYZ on track 122° to cross FRDMM at 8000 and at 240K, then on track 078° to STAND, then on track 078° to TGTHR, then on track 148° to FERGI, then on track 148°. Expect RADAR vectors to final approach course.

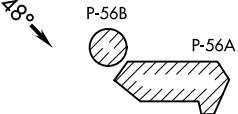
LANDING DCA RUNWAY 1, 4, 33: From ALWYZ on track 125° to cross LETZZ at 8000, then on track 130° to cross RLLLL at 6000 and at 250K, then on track 131° to VCTRY, then on track 189° to HEROO, then on track 189°. Expect RADAR vectors to final approach course.

LANDING DCA RUNWAY 15, 19, 22: From ALWYZ on track 122° to cross FRDMM at 8000 and at 240K, then on track 078° to STAND, then on track 078° to TGTHR, then on track 148° to FERGI, then on track 148°. Expect RADAR vectors to final approach course.

LANDING DAA: From ALWYZ on track 125° to cross LETZZ at 8000, then on track 130° to cross RLLLL at 6000 and at 250K, then on track 131° to VCTRY, then on track 189° to HEROO, then on track 189°. Expect RADAR vectors to final approach course.

POTOMAC APP CON
118.675 323.175
DCA D-ATIS
132.65
ADW D-ATIS
133.675 251.05
DAA ATIS ★
128.175

KDCA Ldg Rwy 15, 19, 22



RONALD REAGAN WASHINGTON NTL

JOINT BASE ANDREWS

DAVISON AAF

KDCA Ldg Rwy 1, 4, 33
KADW Ldg Rwy 1 L/R
Ldg KDA

NOTE: Chart not to scale.

ALWYZ.FRDMM6) 24137

AL-443 (FAA)

WASHINGTON, DC