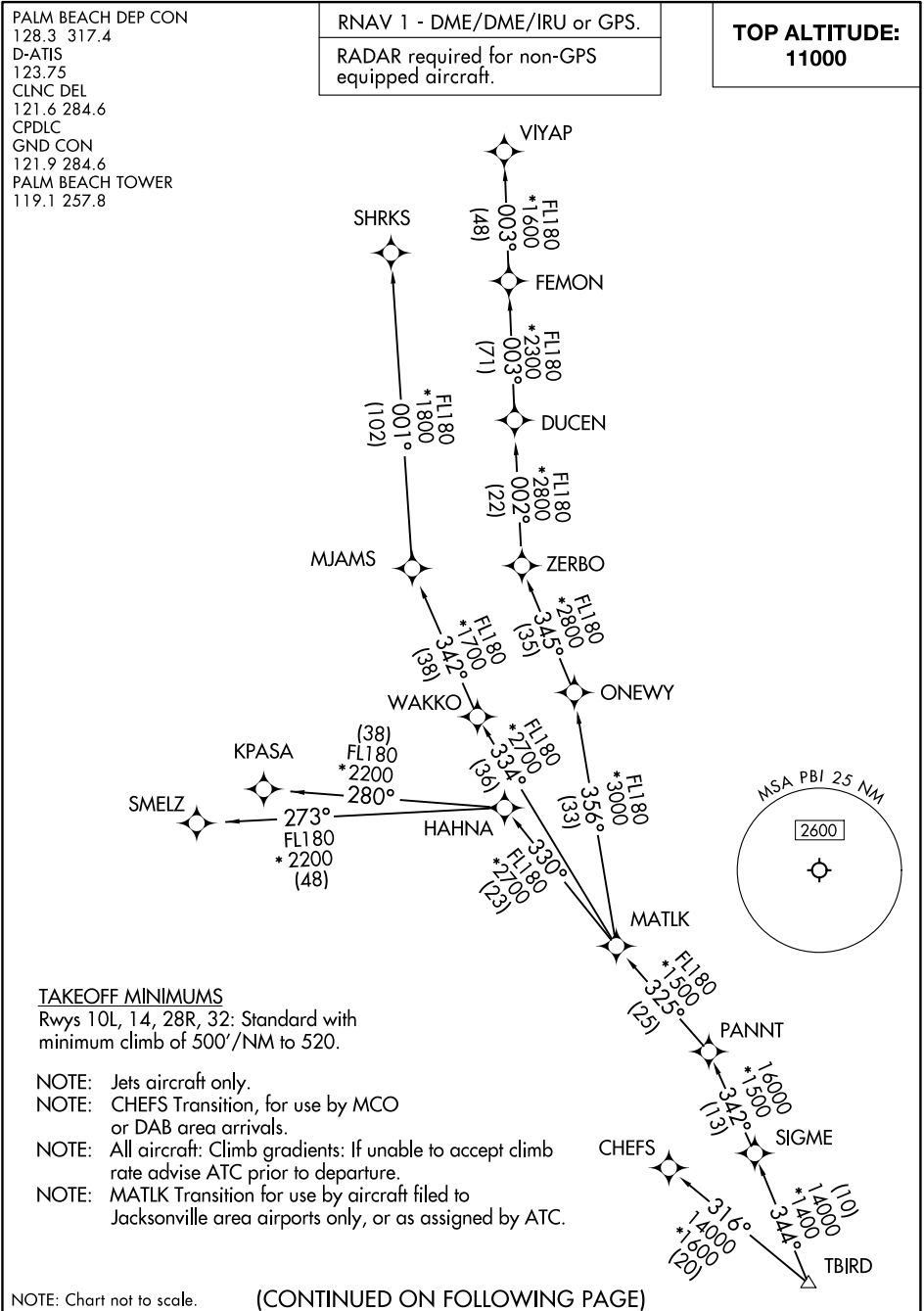


SE-3, 27 NOV 2025 to 25 DEC 2025

SE-3, 27 NOV 2025 to 25 DEC 2025



SE-3, 27 NOV 2025 to 25 DEC 2025

SE-3, 27 NOV 2025 to 25 DEC 2025



DEPARTURE ROUTE DESCRIPTION

TAKEOFF RUNWAY 10L: Climb on heading 099° to 520, then direct to cross CRRMN at or above 2500, then on track 017° to cross SMGLR at or above 4000, then on track 015° to SONNC, then on track 295° to cross AHABB at or above 6000, then on track 295° to cross BAGGR at or above 10000, thence. . . .

TAKEOFF RUNWAY 14: Climb on heading 141° to intercept course 088° to cross CRRMN at or above 2500, then on track 017° to cross SMGLR at or above 4000, then on track 015° to SONNC, then on track 295° to cross AHABB at or above 6000, then on track 295° to cross BAGGR at or above 10000, thence. . . .

TAKEOFF RUNWAY 28R: Climb on heading 279° to 520, then direct to cross CRYER at or above 2500, then on track 308° to cross UTLEY at or above 4000, then on track 342° to cross BAGGR at or above 10000, thence. . . .

TAKEOFF RUNWAY 32: Climb on heading 321° to 520, then direct BAYBE, then on track 319° to cross BAGGR at or above 10000, thence. . . .
. . . .on track 345° to TBIRD, then on assigned transition, maintain 11000.
Expect filed altitude 10 minutes after departure.

- CHEFS TRANSITION (TBIRD6.CHEFS)
- KPASA TRANSITION (TBIRD6.KPASA)
- MATLK TRANSITION (TBIRD6.MATLK)
- SHRKS TRANSITION (TBIRD6.SHRKS)
- SMELZ TRANSITION (TBIRD6.SMELZ)
- VIYAP TRANSITION (TBIRD6.VIYAP)