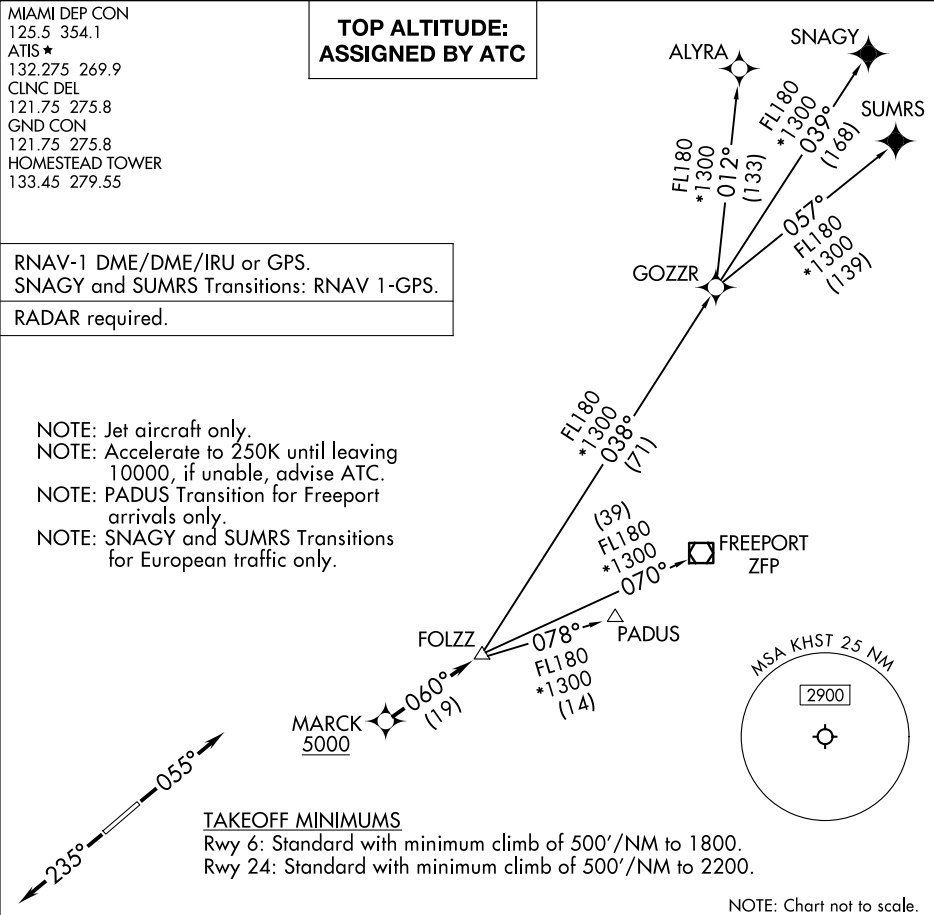


MIAMI DEP CON  
125.5 354.1  
ATIS ★  
132.275 269.9  
CLNC DEL  
121.75 275.8  
GND CON  
121.75 275.8  
HOMESTEAD TOWER  
133.45 279.55

TOP ALTITUDE:  
ASSIGNED BY ATC

RNAV-1 DME/DME/IRU or GPS.  
SNAGY and SUMRS Transitions: RNAV 1-GPS.  
RADAR required.

NOTE: Jet aircraft only.  
NOTE: Accelerate to 250K until leaving 10000, if unable, advise ATC.  
NOTE: PADUS Transition for Freeport arrivals only.  
NOTE: SNAGY and SUMRS Transitions for European traffic only.



TAKEOFF MINIMUMS  
Rwy 6: Standard with minimum climb of 500'/NM to 1800.  
Rwy 24: Standard with minimum climb of 500'/NM to 2200.

DEPARTURE ROUTE DESCRIPTION

TAKEOFF RUNWAY 6: Climb on heading 055° or as assigned by ATC for RADAR vectors to cross MARCK at or above 5000, thence. . .  
TAKEOFF RUNWAY 24: Climb on heading 235° or as assigned by ATC for RADAR vectors to cross MARCK at or above 5000, thence. . .  
  
. . .on track 060° to FOLZZ, then on assigned transition. Maintain ATC assigned altitude, expect filed altitude within 10 minutes after departure.

ALYRA TRANSITION (FOLZZ3.ALYRA)  
FREEPORT TRANSITION (FOLZZ3.ZFP)  
GOZZR TRANSITION (FOLZZ3.GOZZR)  
PADUS TRANSITION (FOLZZ3.PADUS)  
SNAGY TRANSITION (FOLZZ3.SNAGY)  
SUMRS TRANSITION (FOLZZ3.SUMRS)