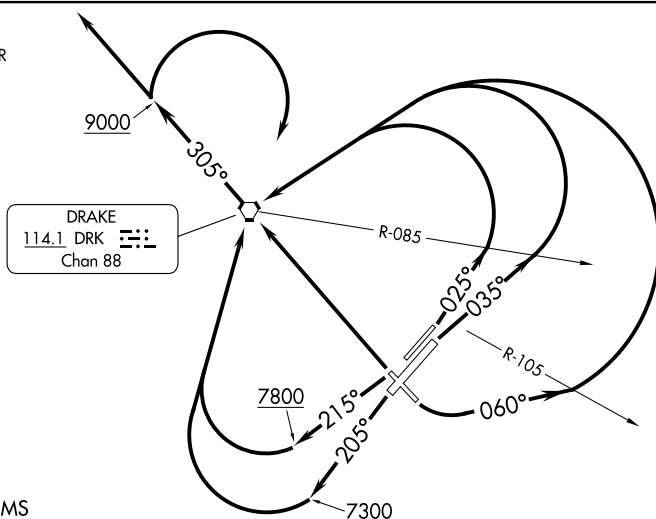


PRESCOTT THREE DEPARTURE (OBSTACLE) AL-546 (FAA)

PRESCOTT, ARIZONA

PHOENIX DEP CON  
133.575 281.55  
ALBUQUERQUE CENTER  
128.45 298.9  
ATIS  
127.2  
CLNC DEL  
119.25  
GND CON  
121.7  
PRESCOTT TOWER ★  
125.3 (CTAF) 257.9



## TAKEOFF MINIMUMS

Rwys 3L/R. 30: Standard.

Rwy 12: Standard with a minimum climb of 260' per NM to 5700 or 600-2¾ with a minimum climb of 245' per NM to 5600 or 1800-3 for VCOA.

Rwy 21L: Standard with a minimum climb of 430' per NM to 8200 or 1800-3 for VCOA.

Rwy 21R: Standard with a minimum climb of 500' per NM to 8800 or 1800-3 for VCOA.

(CONTINUED ON FOLLOWING PAGE)

NOTE: Chart not to scale.

## DEPARTURE ROUTE DESCRIPTION

**TAKEOFF RUNWAY 3L:** Climb heading 025° until crossing DRK VORTAC R-085, then climbing left turn direct DRK VORTAC, thence. . . .

**TAKEOFF RUNWAY 3R:** Climb heading 035° until crossing DRK VORTAC R-085, then climbing left turn direct DRK VORTAC, thence. . . .

**TAKEOFF RUNWAY 12:** Climbing left turn heading 060° until crossing DRK VORTAC R-105, then climbing left turn direct DRK VORTAC, thence. . .

TAKEOFF RUNWAY 21L: Climb heading 205° until 7300, then climbing right turn direct  
DRK VORTAC. thence. . . .

**TAKEOFF RUNWAY 21R:** Climb heading 215° until 7800, then climbing right turn direct DRK VORTAC, thence. . . .

TAKEOFF RUNWAY 30: Climb direct DRK VORTAC, thence. . .

. . . climb on DRK VORTAC R-305 to 9000. Aircraft departing on DRK VORTAC R-305 continue climbing on course. All other aircraft climbing right turn direct DRK VORTAC then on assigned course.

**VCOA RUNWAYS 12, 21L/R:** Obtain ATC approval for VCOA when requesting IFR clearance. Climb in visual conditions to cross Prescott Airport at or above 6700 direct DRK VORTAC, then climb on DRK VORTAC R-305 to 9000. Aircraft departing on DRK VORTAC R-305 continue climbing on course. All other aircraft climbing right turn direct DRK VORTAC then on assigned course.

PRESCOTT THREE DEPARTURE (OBSTACLE)

PRESCOTT, ARIZONA

(PRC3.DRK) 20JUN19

PRESCOTT RGNL/ERNEST A LOVE FLD (PRC)

SW-4, 27 NOV 2025 to 25 DEC 2025

SW-4

TAKEOFF OBSTACLE NOTES	
Rwy 3L:	Lighting 8' from DER, 19' right of centerline, 1' AGL/4939' MSL. Sign 15' from DER, 126' left of centerline, 3' AGL/4939' MSL. Tree 20' from DER, 408' left of centerline, 4949' MSL. Tree 184' from DER, 404' left of centerline, 4951' MSL.
Rwy 12:	Tree 4' from DER, 323' right of centerline, 5066' MSL. Buildings, lighting, sign beginning 9' from DER, 122' left of centerline, up to 31' AGL/5057' MSL. Tree, utility pole, sign, terrain beginning 19' from DER, 65' right of centerline, up to 28' AGL/5086' MSL. Terrain, trees, building, lighting beginning 24' from DER, 111' left of centerline, up to 46' AGL/5062' MSL. Terrain, road beginning 196' from DER, 317' left of centerline, up to 5069' MSL. Trees beginning 302' from DER, 361' left of centerline, up to 45' AGL/5083' MSL. Tower, road, trees, pole beginning 426' from DER, 267' left of centerline, up to 46' AGL/5092' MSL. Terrain, trees beginning 2.1 NM from DER, 2368' right of centerline, up to 56' AGL/5656' MSL.
Rwy 21R:	Sign, terrain beginning 11' from DER, 82' left of centerline, up to 2' AGL/4977' MSL. Sign, trees, road, building, electrical system, pole, tank beginning 11' from DER, 19' right of centerline, up to 50' AGL/5024' MSL. Trees beginning 90' from DER, 70' left of centerline, up to 50' AGL/5041' MSL. Trees, poles, building beginning 752' from DER, 22' right of centerline, up to 50' AGL/5031' MSL. Tree, pole beginning 940' from DER, 3' left of centerline, up to 50' AGL/5044' MSL. Trees, poles, building beginning 980' from DER, 22' right of centerline, up to 50' AGL/5044' MSL. Fence, trees, poles, road, building, stack, tank beginning 1207' from DER, 35' right of centerline, up to 57' AGL/5054' MSL. Trees, poles beginning 1561' from DER, left and right of centerline, up to 50' AGL/5064' MSL. Trees beginning 1954' from DER, 129' left of centerline, 50' AGL/5064' MSL. Trees beginning 2325' from DER, left and right of centerline, up to 50' AGL/5080' MSL. Trees beginning 2615' from DER, 140' left of centerline, up to 50' AGL/5077' MSL. Building, trees beginning 2718' from DER, 35' right of centerline, up to 50' AGL/5093' MSL. Trees, pole beginning 3134' from DER, 128' left of centerline, up to 50' AGL/5090' MSL. Trees beginning 3442' from DER, 24' right of centerline, up to 50' AGL/5103' MSL. Trees beginning 3527' from DER, 175' left of centerline, up to 50' AGL/5103' MSL. Antenna, building, trees beginning 3772' from DER, left and right of centerline, up to 90' AGL/5116' MSL. Trees beginning 4194' from DER, 145' right of centerline, up to 5113' MSL. Trees beginning 4759' from DER, left and right of centerline, up to 75' AGL/5117' MSL. Trees beginning 5180' from DER, 15' right of centerline, 70' AGL/5119' MSL. Trees beginning 5408' from DER, 743' right of centerline, up to 50' AGL/5126' MSL.
Rwy 21L:	Lighting, fence beginning 30' from DER, 336' left of centerline, up to 7' AGL/5042' MSL. Road, fence, tree beginning 111' from DER, 469' left of centerline, up to 5051' MSL. Road, fence beginning 300' from DER, 455' left of centerline, up to 5056' MSL. Wind indicator, pole, tree, roads beginning 402' from DER, 269' right of centerline, up to 5076' MSL. Tree, fence, roads, lighting, pole, sign, navaid, building beginning 614' from DER, 41' left of centerline, up to 5113' MSL. Trees, road beginning 782' from DER, 528' right of centerline, up to 47' AGL/5089' MSL. Trees, road, pole, fence, electrical system, building, lighting, antenna beginning 971' from DER, 2' right of centerline, up to 70' AGL/5117' MSL. Trees beginning 1779' from DER, 108' left of centerline, up to 71' AGL/5116' MSL.
Rwy 30:	Buildings, sign, poles beginning 28' from DER, 127' left of centerline, up to 25' AGL/5041' MSL.