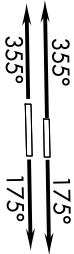
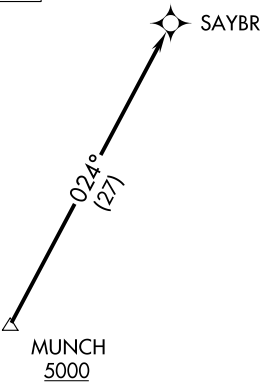


D-ATIS  
124.4  
CLNC DEL  
125.5 263.0  
CPDLC  
GND CON  
121.9 348.6  
AUSTIN TOWER  
121.0 281.5  
AUSTIN DEP CON  
127.225 317.65

TOP ALTITUDE:  
ASSIGNED BY ATC



NOTE: RADAR required.  
NOTE: DME/DME/IRU or GPS required.  
NOTE: RNAV 1.  
NOTE: For DFW terminal area arrivals  
at FL230 or below only.

TAKEOFF MINIMUMS  
Rwys 18L/R: Standard.  
Rwys 36L/R: Standard with minimum climb  
of 240' per NM to 2600.

NOTE: Chart not to scale.



DEPARTURE ROUTE DESCRIPTION

TAKEOFF RUNWAYS 18L/R: Climb on heading 175° or as assigned by ATC for  
vectors to cross MUNCH at or above 5000, thence . . .  
TAKEOFF RUNWAYS 36L/R: Climb on heading 355° or as assigned by ATC for  
vectors to cross MUNCH at or above 5000, thence . . .

. . . on track 024° to SAYBR. Maintain altitude assigned by ATC.  
Expect filed altitude 10 minutes after departure.

SC-3, 27 NOV 2025 to 25 DEC 2025

SC-3, 27 NOV 2025 to 25 DEC 2025