

FATHE FOUR DEPARTURE (RNAV) Departure Routes

ORLANDO DEP CON
124.8 307.0
D-ATIS DEP
120.525
CLNC DEL
134.7 341.7
CPDLC
GND CON
126.4 (E)
121.8 (W)
ORLANDO TOWER
118.45 253.5 (17L-35R, 17R-35L)
124.3 253.5 (18L-36R, 18R-36L)

See following page
for transition routes.

FATH

TOP ALTITUDE:

Rwys 17L/R, 18L/R: 7000
Rwys 35L/R, 36L/R: 16000

RNAV 1 - DME/DME/IRU or GPS.

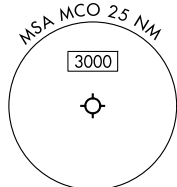
RADAR required.

TAKEOFF MINIMUMS

Rwys 17L/R, 18L/R, 35L/R, 36L/R: Standard with minimum climb of 500'/NM to 596.

NOTE: Jet aircraft only.

NOTE: KDED airport, extensive parachute and flight training operations at/below 13500. Avoid overflying airport during parachute operations.



(CONTINUED ON FOLLOWING PAGE)

NOTE: Chart not to scale.

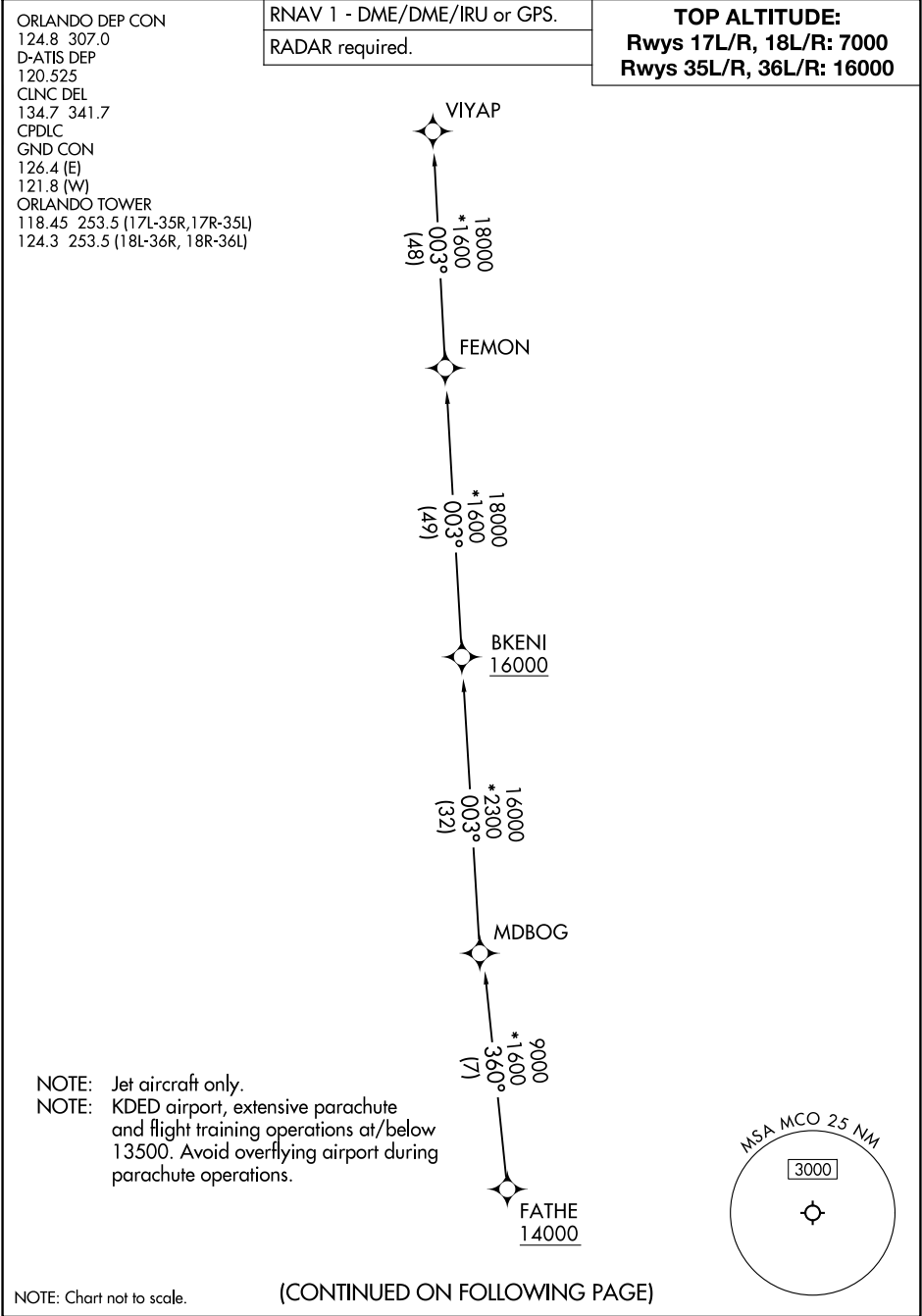
FATHE FOUR DEPARTURE (RNAV) Departure Routes

(FATHE4.FATHE) 12JUN25

ORLANDO, FLORIDA

ORLANDO INTL (MCO)

SE-3, 27 NOV 2025 to 25 DEC 2025



SE-3, 27 NOV 2025 to 25 DEC 2025

SE-3, 27 NOV 2025 to 25 DEC 2025



DEPARTURE ROUTE DESCRIPTION
SEE ADDITIONAL REQUIREMENTS ON AAUP

TAKEOFF RUNWAY 17L: Climb on heading 185° to intercept course 168° to cross KAAPE at or above 1500, then on track 140°, for vectors to BUFFI, thence. . . .

TAKEOFF RUNWAY 17R: Climb on heading 185° to intercept course 154° to cross KAAPE at or above 1500, then on track 140°, for vectors to BUFFI, thence. . . .

TAKEOFF RUNWAY 18L: Climb on heading 185° to intercept course 214° to cross VILNS at or above 1500, then on track 237°, for vectors to BUFFI, thence. . . .

TAKEOFF RUNWAY 18R: Climb on heading 185° to intercept course 209° to cross VILNS at or above 1500, then on track 237°, for vectors to BUFFI, thence. . . .

TAKEOFF RUNWAY 35L: Climb on heading 005° to intercept course 037° to cross JWOLF at or above 2600, then on track 010° to cross JIRAN at or above 3000, then on track 004° to BIGSE, then on track 358° to cross GOTH A at or below 7000, then on track 359° to BUFFI, thence. . . .

TAKEOFF RUNWAY 35R: Climb on heading 005° to intercept course 032° to cross JWOLF at or above 2600, then on track 010° to cross JIRAN at or above 3000, then on track 004° to BIGSE, then on track 358° to cross GOTH A at or below 7000, then on track 359° to BUFFI, thence. . . .

TAKEOFF RUNWAY 36L: Climb on heading 005° to 596, then direct KYOTE at or above 2300, then on track 006° to cross EARRS at or above 3000 and at or below 230K, then on track 013° to cross TRYNA at or below 7000, then on track 013° to BUFFI, thence. . . .

TAKEOFF RUNWAY 36R: Climb on heading 005° to 596, then direct FACTS at or above 2300, then on track 006° to cross HANDD at or above 3000 and at or below 230K, then on track 011° to cross TRYNA at or below 7000, then on track 013° to BUFFI, thence. . . .

. . . then on track 002° to cross FATHE at or above 14000, then on transition.
RUNWAYS 17L/R, 18L/R maintain 7000, RUNWAYS 35L/R, 36L/R maintain 16000, expect filed altitude 10 minutes after departure.

ALL AIRCRAFT: ATC climb gradient: if unable to accept climb rate advise ATC prior to taxi. RUNWAY 35R: 548' /NM to 2600, RUNWAY 36L: 599' /NM to 2300, RUNWAY 36R: 589' /NM to 2300.

VIYAP TRANSITION (FATHE4.VIYAP)