

AL-571 (FAA)

SNFLD THREE ARRIVAL (RNAV)

ORLANDO, FLORIDA

RNAV 1- DME/DME/IRU or GPS.

RADAR required.

ORLANDO APP CON

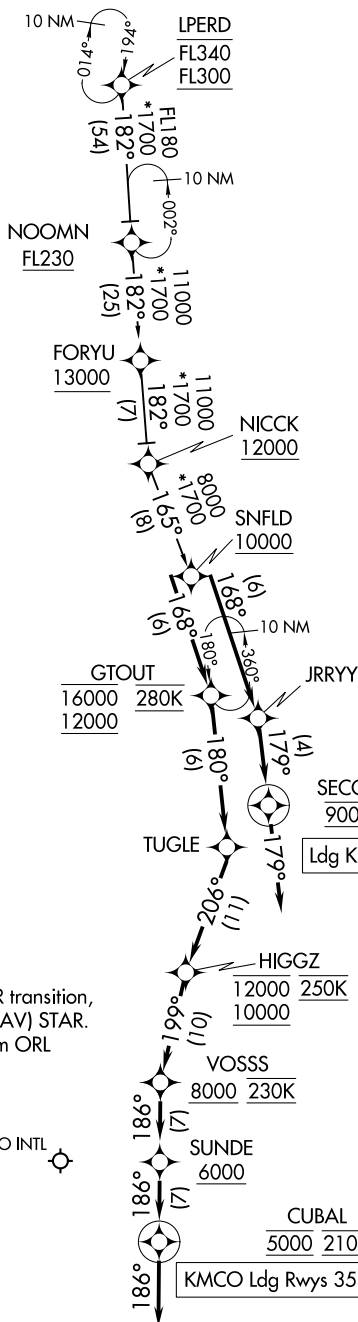
128.375 338.2

ISM ATIS

128.775

MCO D-ATIS ARR

121.25



NOTE: Chart not to scale.

SNFLD THREE ARRIVAL (RNAV)

ORLANDO, FLORIDA

(SNFLD.SNFLD3) 23FEB23

SE-3, 27 NOV 2025 to 25 DEC 2025

SE-3, 27 NOV 2025 to 25 DEC 2025

ARRIVAL ROUTE DESCRIPTION

LANDING KMCO RUNWAYS 35L/R, 36L/R: From SNFLD on track 168° to cross GTOUT between 12000 and 16000 and at 280K, then on track 180° to TUGLE, then on track 206° to cross HIGGZ between 10000 and 12000 and at 250K, then on track 199° to cross VOSSS at or above 8000 and at 230K, then on track 186° to cross SUNDE at or above 6000, then on track 186° to cross CUBAL at 5000 and at 210K, then on track 186°. Expect RADAR vectors to final approach course.

LANDING KISM: From SNFLD on track 168° to JRRYY, then on track 179° to cross SECOY at 9000, then on track 179°. Expect RADAR vectors to final approach course.

FORYU TRANSITION (FORYU.SNFLD3)
LPERD TRANSITION (LPERD.SNFLD3)