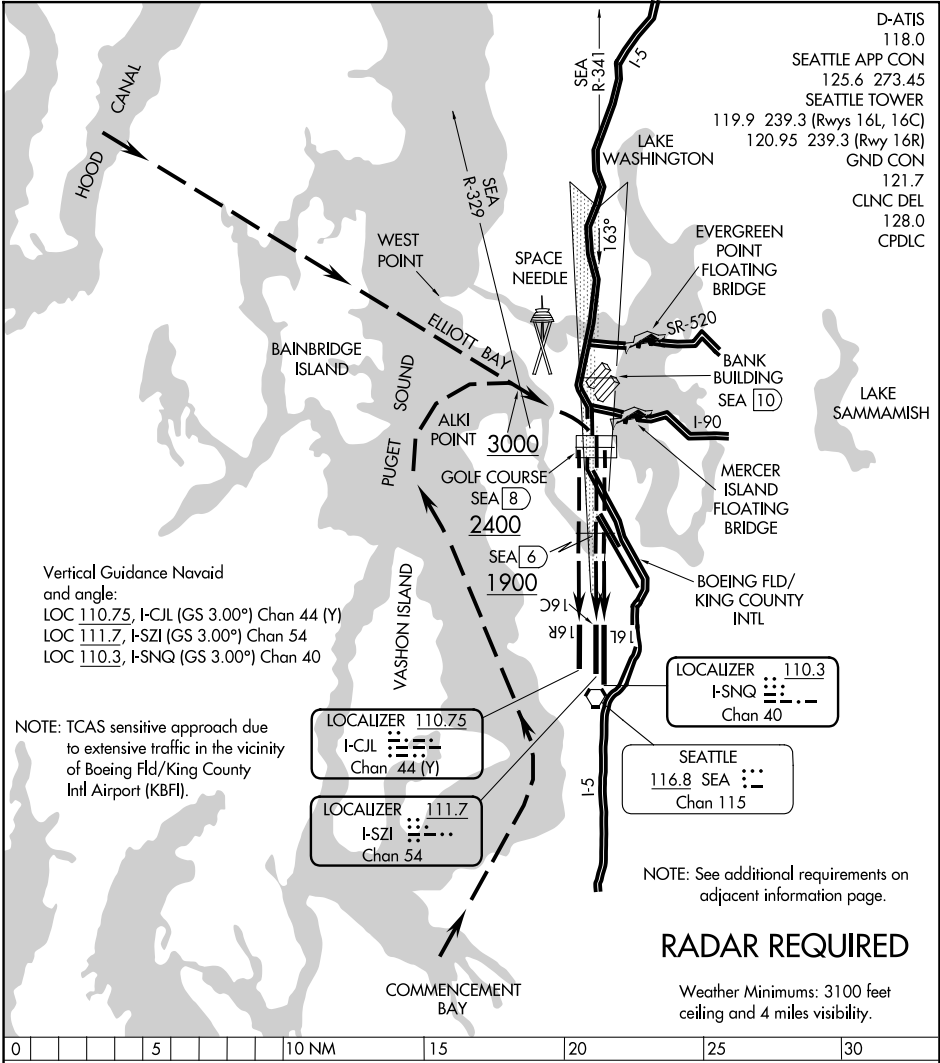


BAY VISUAL RWY 16R/C/L

AL-582 (FAA)

SEATTLE-TACOMA INTL (SEA)
SEATTLE, WASHINGTON



NW-1, 27 NOV 2025 to 25 DEC 2025

NW-1, 27 NOV 2025 to 25 DEC 2025

BAY VISUAL APPROACH RWY 16R/C/L

When the ceiling is at least 3100' and visibility is at least 4 miles, aircraft may be vectored over Puget Sound for a Bay Visual Runway 16R/C/L Approach. When cleared for a Bay Visual Approach: proceed inbound visually over the middle of Elliott Bay (via route depicted); intercept the Runway 16R/C/L localizer/SEA R-341 on Runway 16R/C/L extended centerline at the golf course (8 DME) and complete a straight in visual approach to the airport. On final approach, a descent profile of approximately 300' per mile may be made with reference to the altitudes shown at the visual checkpoints or associated DME/fix positions.

SEATTLE-TACOMA INTL AIRPORT

ALERT NOTICE

ATTENTION ALL AIRCRAFT LANDING TO THE SOUTH:

When transitioning from an instrument procedure to a visual approach to Runway 16C, verify that you are aligned for the intended landing Runway, not Taxiway Tango. Taxiway Tango is west and parallel to Runway 16C.

TRANSITION TO VISUAL:

Taxiway Tango has been mistaken for Runway 16C from the air during certain visibility conditions, i.e., wet runway, low sun angle reflections. Aircrews are advised to be aware of the proximity of the taxiway to Runway 16C and its runway-like appearance while on approach.

RECOMMENDATION:

Aircrews should use visual cues, e.g., approach lighting systems, REILs, when available, to confirm alignment with Runway 16C not Taxiway Tango. Additionally, it is recommended to track the localizer until the runway environment is visually verified.

