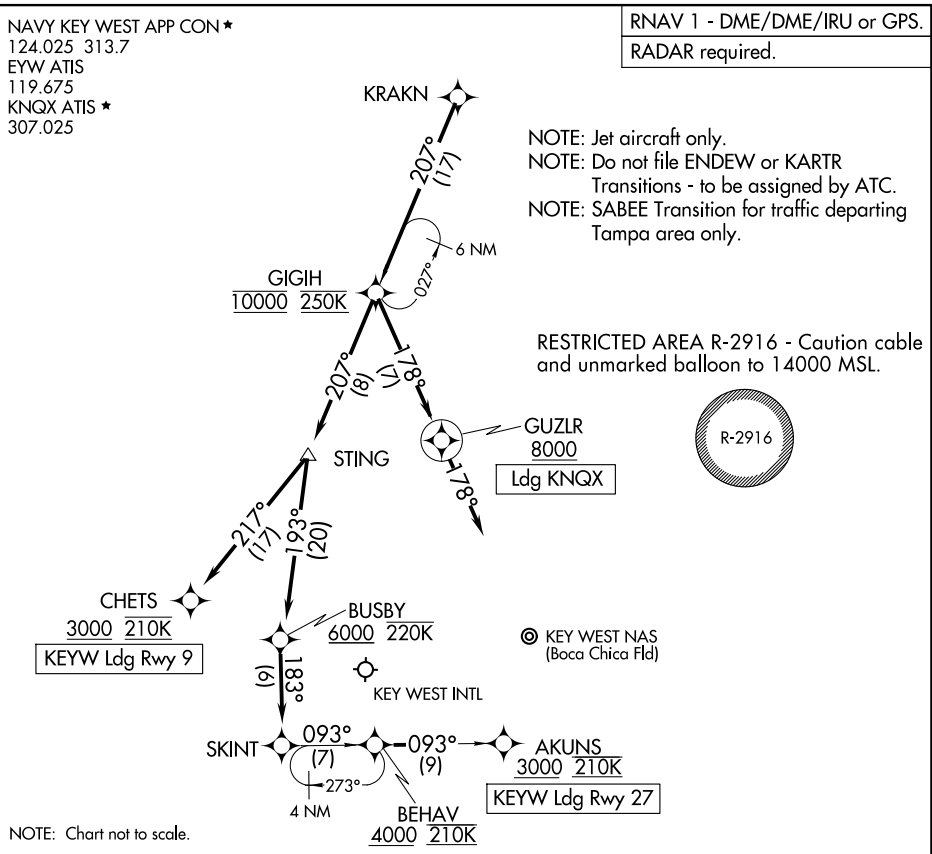


SE-3, 27 NOV 2025 to 25 DEC 2025

SE-3, 27 NOV 2025 to 25 DEC 2025



ARRIVAL ROUTE DESCRIPTION

KEYW: From KRAKN on track 207° to cross GIGIH at 10000 and at 250K, then on track 207° to STING.

LANDING KEYW RUNWAY 9: From STING on track 217° to cross CHETS at or above 3000 and at 210K. Expect RNAV (GPS) RWY 9 approach.

LANDING KEYW RUNWAY 27: From STING on track 193° to cross BUSBY at or above 6000 and at or below 220K, then on track 183° to SKINT, then on track 093° to cross BEHAV at or above 4000 and at 210K, then on track 093° to cross AKUNS at or above 3000 and at 210K. Expect RNAV (GPS) RWY 27 approach.

LANDING KNQX: From KRAKN on track 207° to cross GIGIH at 10000 and at 250 K, then on track 178° to cross GUZLR at or above 8000, then on track 178°. Expect RADAR vectors to final approach course.