

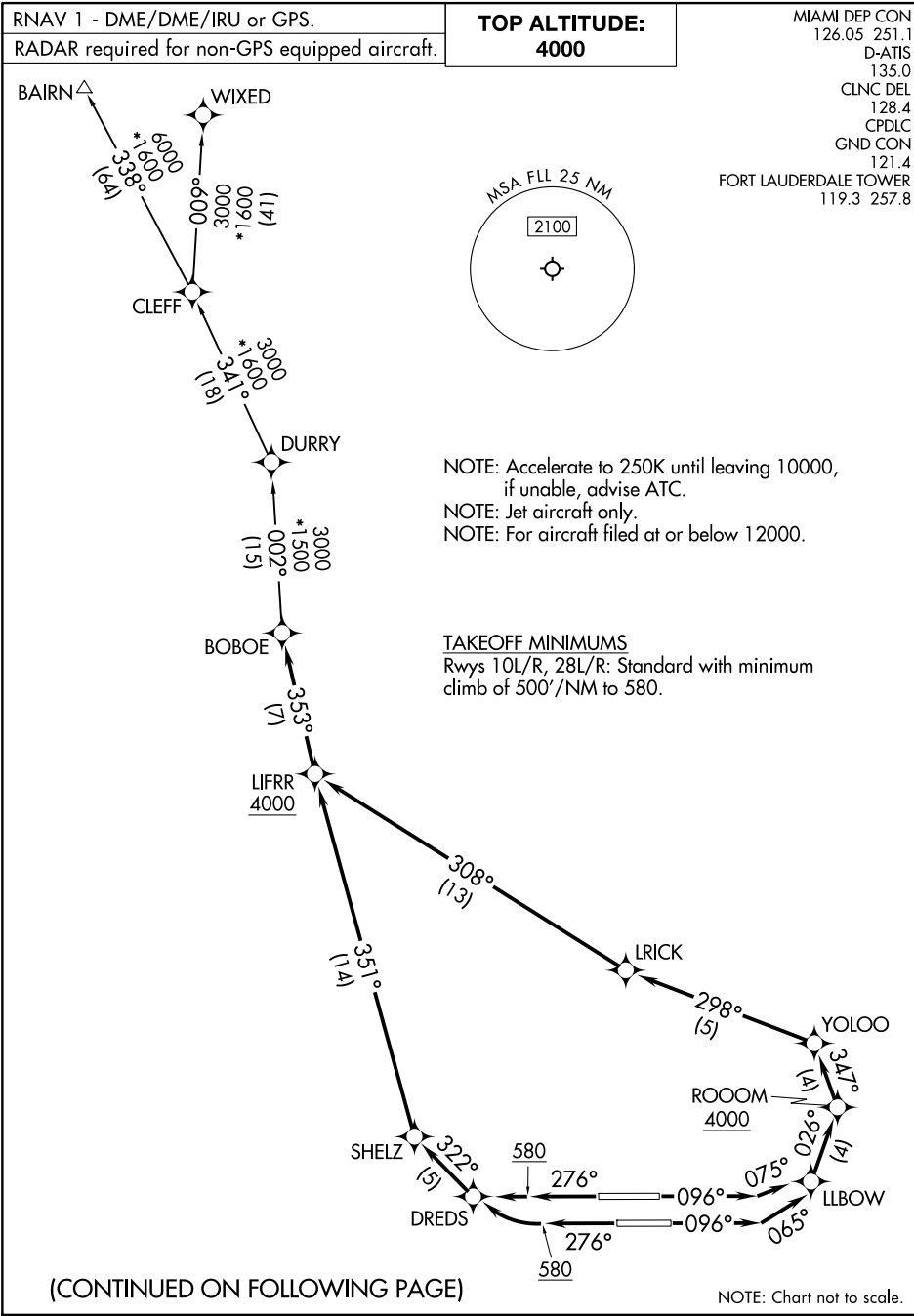
(LIFRR2.LIFRR) 24081

AL-744 (FAA)

FORT LAUDERDALE/HOLLYWOOD INTL (FLL)

FORT LAUDERDALE, FLORIDA

LIFRR TWO DEPARTURE(RNAV)



SE-3, 27 NOV 2025 to 25 DEC 2025

SE-3, 27 NOV 2025 to 25 DEC 2025

LIFRR TWO DEPARTURE(RNAV)

(LIFRR2.LIFRR) 21MAR24

FORT LAUDERDALE, FLORIDA

FORT LAUDERDALE/HOLLYWOOD INTL (FLL)

LIFRR TWO DEPARTURE(RNAV)



DEPARTURE ROUTE DESCRIPTION
SEE ADDITIONAL REQUIREMENTS ON AAUP

TAKEOFF RUNWAY 10L: Climb on heading 096° to intercept course 075° to LLBOW, then on track 026° to cross ROOOM at or above 4000, then on track 347° to YOLOO, then on track 298° to LRICK, then on track 308° to cross LIFRR at or above 4000, thence. . .
TAKEOFF RUNWAY 10R: Climb on heading 096° to intercept course 065° to LLBOW, then on track 026° to cross ROOOM at or above 4000, then on track 347° to YOLOO, then on track 298° to LRICK, then on track 308° to cross LIFRR at or above 4000, thence. . .
TAKEOFF RUNWAY 28L: Climb on heading 276° to 580, then right turn direct DREDS, then on track 322° to SHELZ, then on track 351° to cross LIFRR at or above 4000, thence. . .
TAKEOFF RUNWAY 28R: Climb on heading 276° to 580, then direct DREDS, then on track 322° to SHELZ, then on track 351° to cross LIFRR at or above 4000, thence. . .
. . .on track 353° to BOBOE, then on assigned transition, maintain 4000, expect clearance to filed altitude within 10 minutes after departure.

BAIRN TRANSITION (LIFRR2.BAIRN)
WIXED TRANSITION (LIFRR2.WIXED)

SE-3, 27 NOV 2025 to 25 DEC 2025

SE-3, 27 NOV 2025 to 25 DEC 2025