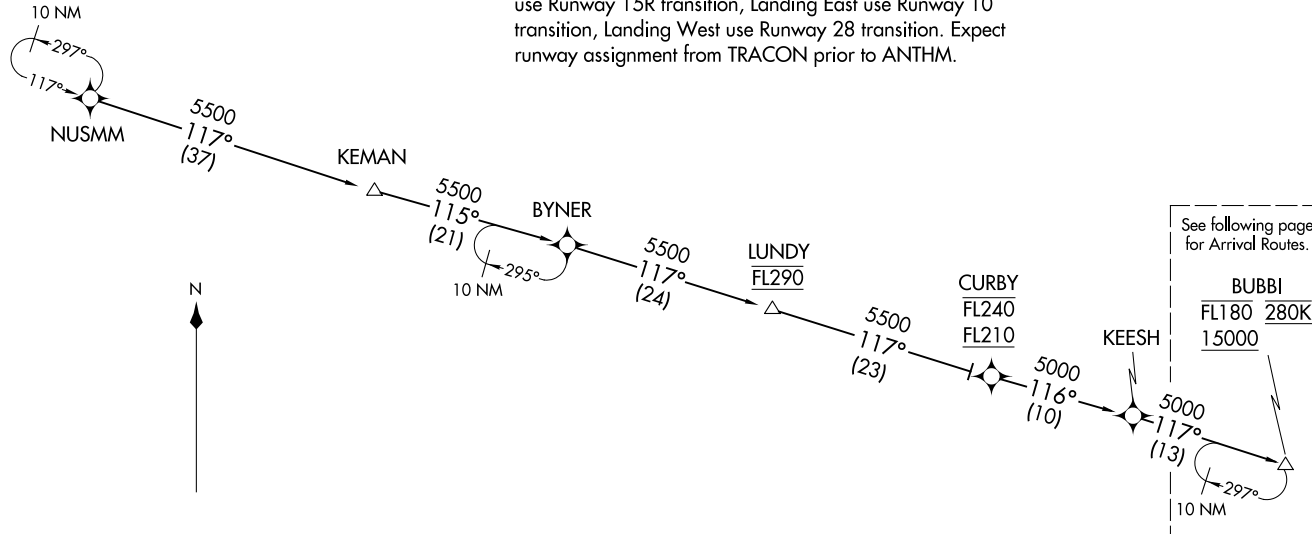


RNAV 1 - DME/DME/IRU or GPS.
RADAR required.

- NOTE: Jet aircraft only.
NOTE: PROHIBITED AREA (P-56) 1.5 NM north of DCA avoid surface to 18000 MSL.
NOTE: Landing North use Runway 33L transition, Landing South use Runway 15R transition, Landing East use Runway 10 transition, Landing West use Runway 28 transition. Expect runway assignment from TRACON prior to ANTHM.



KEESH TRANSITION (KEESH.ANTHM5)
KEMAN TRANSITION (KEMAN.ANTHM5)
NUSMM TRANSITION (NUSMM.ANTHM5)

(CONTINUED ON FOLLOWING PAGES)

NOTE: Chart not to scale.

ANTHM FIVE ARRIVAL (RNAV) Arrival Routes
(BUBBI,ANTHM5) 26DEC24

BALTIMORE, MARYLAND

POTOMAC APP CON
133.85 254.25
BWI D-ATIS
115.1 127.8
MTN ATIS
124.925

BUBBI
FL180 280K
15000

EAGLL
13000
12000

SHEPH
15000

ANTHM

ARYA
11000 250K

KBWI Ldg Rwy 15L/R

ROKTT
11000 250K

FLAAG
7000 6000

OLBAY
9000 250K

CRABZ
6000 5000

MARTIN STATE

FINNZ
5000 210K

STRPS
4000 210K

KEYYY
4000 210K

ASHOR
4000

RAAYY
4000

GRAMZ
4000

KBWI Ldg Rwy 28

KBWI Ldg Rwy 33L/R

ROAPS
4000

HOOOK
4000

SPNGL
4000

BRAVV

JABRR
11000 250K

STARZ
5000 4000 210K

BALTIMORE/
WASHINGTON INTL
THURGOOD MARSHALL

KBWI Ldg Rwy 10

SPNGL
4000

BRAYV

STRPS
4000 210K

KEYYY
4000 210K

ASHOR
4000

RAAYY
4000

GRAMZ
4000

KBWI Ldg Rwy 28

KBWI Ldg Rwy 33L/R

ROAPS
4000

HOOOK
4000

SPNGL
4000

BRAVV

JABRR
11000 250K

STARZ
5000 4000 210K

BALTIMORE/
WASHINGTON INTL
THURGOOD MARSHALL

KBWI Ldg Rwy 10

SPNGL
4000

BRAYV

STRPS
4000 210K

KEYYY
4000 210K

ASHOR
4000

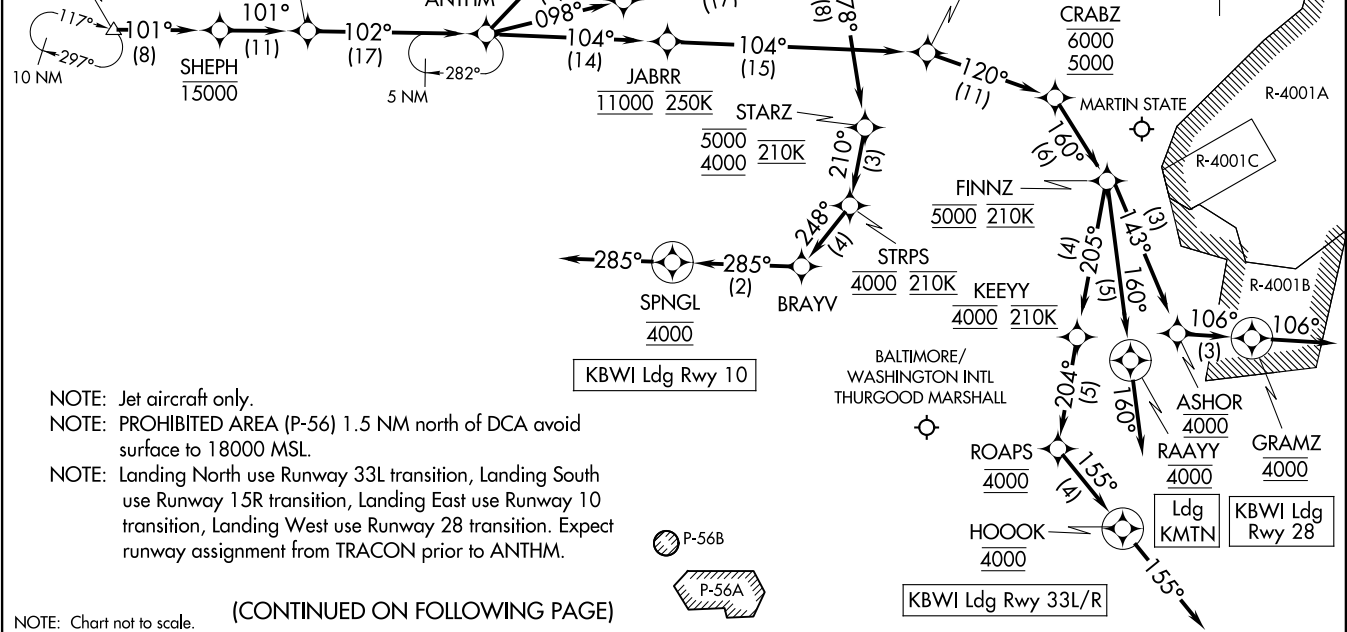
RAAYY
4000

GRAMZ
4000

KBWI Ldg Rwy 28

KBWI Ldg Rwy 33L/R

RNAV 1 - DME/DME/IRU or GPS.
RADAR required.



(CONTINUED ON FOLLOWING PAGE)

(BUBBI,ANTHM5) 24361

AL-804 (FAA)

BALTIMORE, MARYLAND

ANTHM FIVE ARRIVAL (RNAV) Arrival Routes

ARRIVAL ROUTE DESCRIPTION

BWI: From BUBBI on track 101° to cross SHEPH at or below 15000, then on track 101° to cross EAGLL between 12000 and 13000, then on track 102° to ANTHM.

LANDING BWI RUNWAY 10: From ANTHM on track 098° to cross ROKTT at 11000 and at 250K, then on track 098° to cross FLAAG between 6000 and 7000, then on track 178° to cross STARZ between 4000 and 5000 and at 210K, then on track 210° to cross STRPS at 4000 and at 210K, then on track 248° to BRAYV, then on track 285° to cross SPNGL at 4000, then on heading 285°. Expect RADAR vectors to final approach course.

LANDING BWI RUNWAY 15L/R: From ANTHM on track 085° to cross ARYIA at 11000 and at 250K, then on heading 070°. Expect RADAR vectors to final approach course.

LANDING BWI RUNWAY 28: From ANTHM on track 104° to cross JABRR at 11000 and at 250K, then on track 104° to cross OLBAY at or below 9000 and at 250K, then on track 120° to cross CRABZ between 5000 and 6000, then on track 160° to cross FINNZ at 5000 and at 210K, then on track 143° to cross ASHOR at 4000, then on track 106° to cross GRAMZ at 4000, then on track 106°. Expect RADAR vectors to final approach course.

LANDING BWI RUNWAY 33L/R: From ANTHM on track 104° to cross JABRR at 11000 and at 250K, then on track 104° to cross OLBAY at or below 9000 and at 250K, then on track 120° to cross CRABZ between 5000 and 6000, then on track 160° to cross FINNZ at 5000 and at 210K, then on track 205° to cross KEEYY at 4000 and at 210K, then on track 204° to cross ROAPS at 4000, then on track 155° to cross HOOOK at 4000, then on track 155°. Expect RADAR vectors to final approach course.

LANDING MTN: From BUBBI on track 101° to cross SHEPH at or below 15000, then on track 101° to cross EAGLL between 12000 and 13000, then on track 102° to ANTHM, then on track 104° to cross JABRR at 11000 and at 250K, then on track 104° to cross OLBAY at or below 9000 and at 250K, then on track 120° to cross CRABZ between 5000 and 6000, then on track 160° to cross FINNZ at 5000 and at 210K, then on track 160° to cross RAAYY at 4000, then on track 160°. Expect RADAR vectors to final approach course.