

RIDGECREST, CALIFORNIA

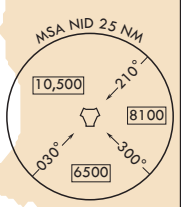
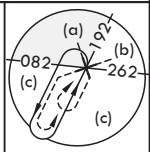
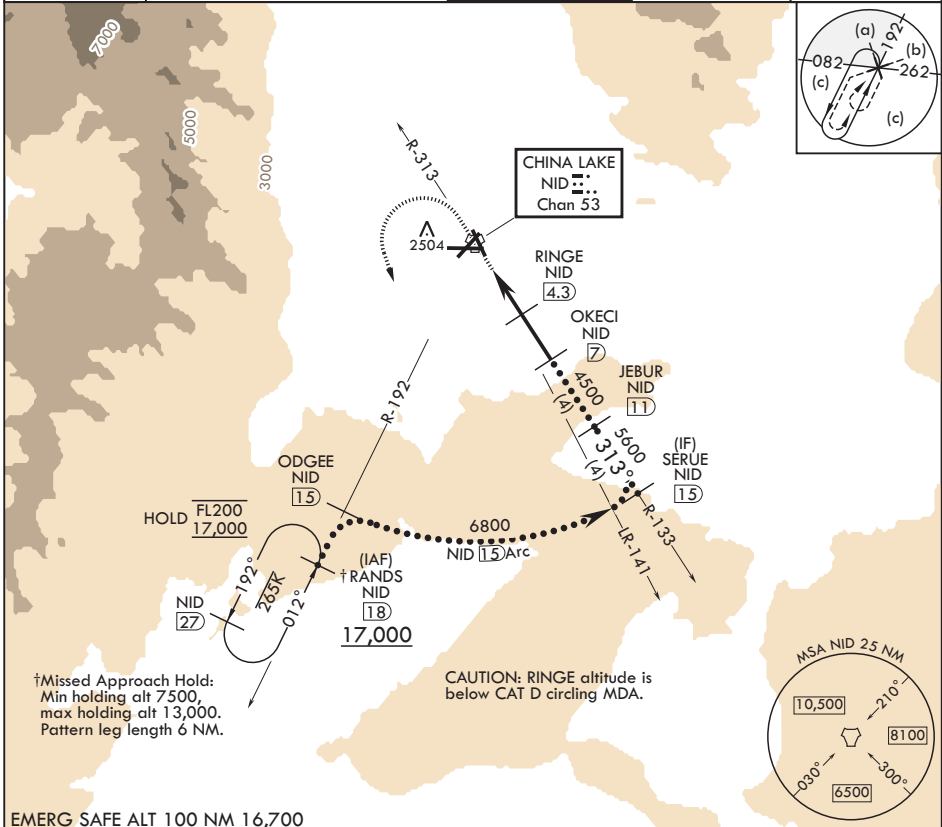
HI-TACAN Z RWY 32

TACAN NID Chan 53	APCH CRS 313°	Rwy ldg TDZE Arprt Elev	9013 2241 2288
----------------------	------------------	-------------------------------	---

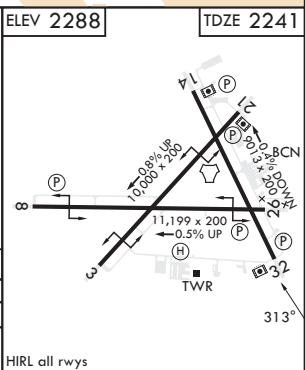
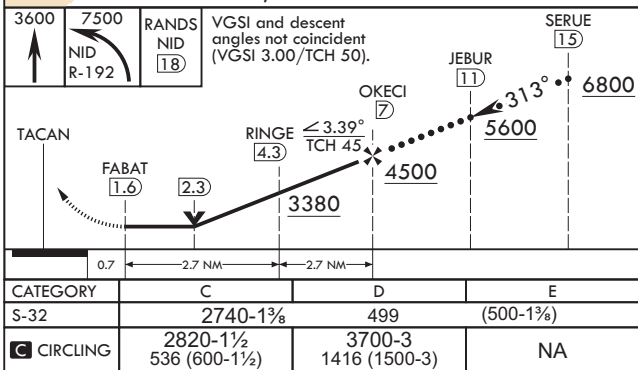
(-USN) CHINA LAKE NAWS (ARMITAGE FLD) (KNID)

RADAR required
MISSED APPROACH: Climb to 3600, then climbing left turn to 7500 to intercept NID TACAN R-192 to RANDS and hold. Continue climb-in-hold to 7500.

ATIS★ 322.375	JOSHUA APP CON/DEP CON 133.65 348.7	TOWER★ 120.15 340.2	GND CON 350.3	CLNC DEL 254.25
-------------------------	---	-------------------------------	-------------------------	---------------------------



EMERG SAFE ALT 100 NM 16,700



RIDGECREST, CALIFORNIA

35°41'N - 117°42'W

CHINA LAKE NAWS (ARMITAGE FLD) (KNID)

Amdt 6 12JUN25

HI-TACAN Z RWY 32

SW-3, 27 NOV 2025 to 25 DEC 2025

SW-3, 27 NOV 2025 to 25 DEC 2025