

RIDGECREST, CALIFORNIA

TACAN Y RWY 03

TACAN NID Chan 53	APCH CRS 034°	Rwy Idg 10,000	TDZE 2284
		Arprt Elev 2288	

[USN]

CHINA LAKE NAWS (ARMITAGE FLD) (KNID)

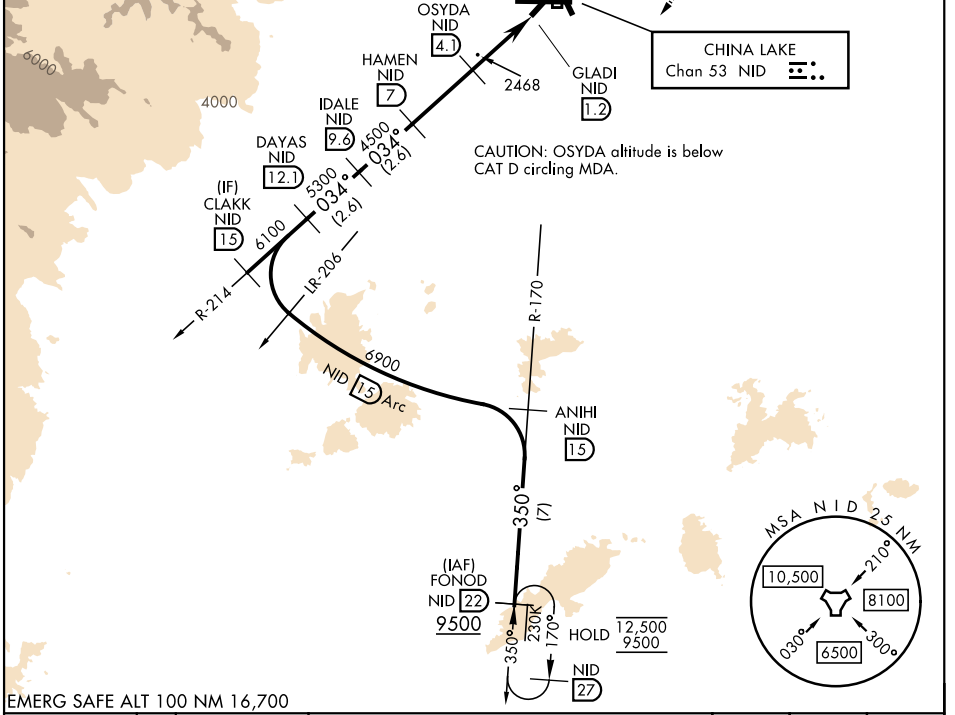
RADAR required

MISSED APPROACH: Climb to 3600 then climbing right turn to 9500 to intercept NID R-170 to FONOD and hold. Continue climb-in-hold to 9500.

ATIS ★ 322.375	JOSHUA APP/DEP CON 133.65 348.7	TOWER ★ 120.15 340.2	GND CON 350.3	CLNC DEL 254.25
-------------------	------------------------------------	-------------------------	------------------	--------------------

%	Knots	60	120	180	240	300	360
4.1	V/V(fpm)	249	498	747	996	1245	1494

Min climb of 4.1% (249 ft/NM) to 4100 - Controlling Obstacle Unk



EMERG SAFE ALT 100 NM 16,700

ELEV 2288	TDZE 2284	CLAKK NID 15	DAYAS NID 12.1	IDALE NID 9.6	HAMEN NID 7	OSYDA NID 4.1	GLADI NID 1.2	FONOD NID 22
		6900	6100	5300	4500	3260	3600	9500
		034°		3.50°		TCH 40		NID R-170
		2.9 NM		2.9 NM		0.1		NID TACAN
CATEGORY	A	B	C	D				
S-03 (4.1%)	2780-1	496 (500-1)	2780-1 ³ / ₈	496 (500-1 ³ / ₈)				
S-03	3080-1	796 (800-1)	3080-1 ¹ / ₄	796 (800-1 ¹ / ₄)				
S-03	3080-1	796 (800-1)	3080-1 ¹ / ₄	796 (800-1 ¹ / ₄)	3080-2 ¹ / ₂	796 (800-2 ¹ / ₂)		
CIRCLING	3080-1	796 (800-1)	3080-1 ¹ / ₄	796 (800-1 ¹ / ₄)	3080-2 ¹ / ₂	796 (800-2 ¹ / ₂)	3700-3	1416 (1500-3)

RIDGECREST, CALIFORNIA

35° 41'N - 117° 42'W

CHINA LAKE NAWS (ARMITAGE FLD) (KNID)

Amtd 1 12JUN25

TACAN Y RWY 03

SW-3, 27 NOV 2025 to 25 DEC 2025

SW-3, 27 NOV 2025 to 25 DEC 2025