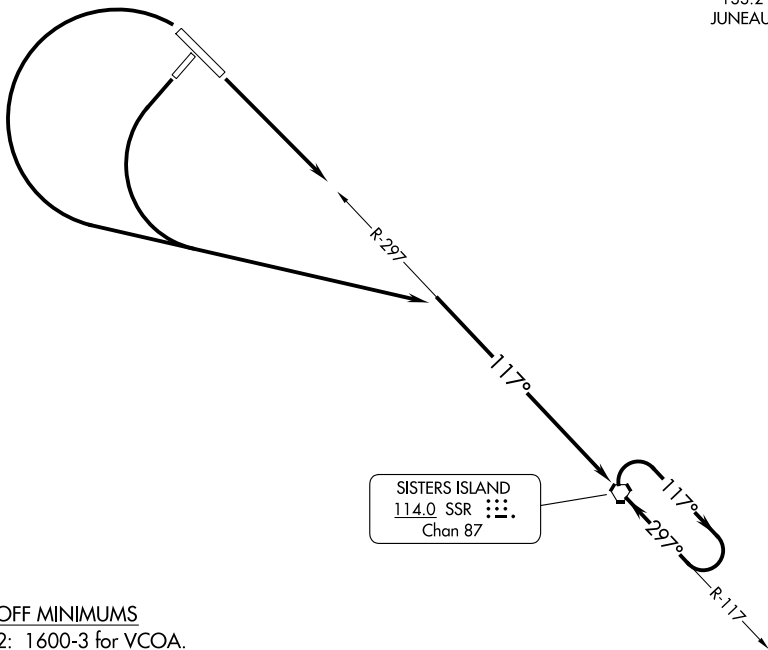


ANCHORAGE CENTER
133.2 360.65
JUNEAU RADIO
122.65



TAKEOFF MINIMUMS

- Rwy 2: 1600-3 for VCOA.
- Rwy 11: Standard with minimum climb of 230' per NM to 1000 or 1600-3 for VCOA.
- Rwy 20: Standard with minimum climb of 215' per NM to 1100 or 1600-3 for VCOA.
- Rwy 29: 300-1 $\frac{3}{4}$ or standard with minimum climb of 270' per NM to 300 or 1600-3 for VCOA.

(CONTINUED ON FOLLOWING PAGE)

NOTE: Chart not to scale.

DEPARTURE ROUTE DESCRIPTION

- TAKEOFF RUNWAY 2: VCOA.
- TAKEOFF RUNWAY 11: Climb to at or above 4000 to intercept SSR R-297 to SSR VORTAC.
- TAKEOFF RUNWAY 20: Climbing left turn to at or above 4000 to intercept SSR R-297 to SSR VORTAC.
- TAKEOFF RUNWAY 29: Climbing left turn to at or above 4000 to intercept SSR R-297 to SSR VORTAC.

VCOA ALL RUNWAYS: Obtain ATC approval for VCOA when requesting IFR clearance. Climb in visual conditions to cross GUSTAVUS airport southeast bound at or above 1 500, continue climb to at or above 4000 on SSR R-297 to SSR VORTAC.

| | |
|-------------------------------|--|
| TAKEOFF OBSTACLE NOTES | |
| Rwy 11: | Tree, navoids, vegetation beginning 2' from DER, 64' right of centerline, up to 11' AGL/36' MSL. Navaid 10' from DER, 54' left of centerline, 2' AGL/30' MSL. Navaid, tree beginning 10' from DER, 148' left of centerline, up to 6' AGL/33' MSL. Tree 118' from DER, 329' left of centerline, 12' AGL/38' MSL. Trees beginning 154' from DER, 520' right of centerline, up to 18' AGL/43' MSL. Tree 329' from DER, 355' left of centerline, 15' AGL/41' MSL. Tree 441' from DER, 371' left of centerline, 20' AGL/43' MSL. Tree 644' from DER, 575' left of centerline, 43' AGL/65' MSL. Trees beginning 691' from DER, 496' right of centerline, up to 90' AGL/115' MSL. Tree 906' from DER, 587' left of centerline, 103' AGL/129' MSL. Trees beginning 917' from DER, 531' right of centerline, up to 105' AGL/130' MSL. Trees beginning 922' from DER, 609' left of centerline, up to 111' AGL/136' MSL. Trees beginning 1173' from DER, 550' left of centerline, up to 114' AGL/140' MSL. Trees beginning 1349' from DER, 561' left of centerline, up to 116' AGL/141' MSL. Tree 1448' from DER, 779' right of centerline, 113' AGL/136' MSL. Trees beginning 1555' from DER, 247' right of centerline, up to 126' AGL/151' MSL. Trees beginning 2044' from DER, 334' left of centerline, up to 128' AGL/152' MSL. Trees beginning 2164' from DER, 311' left of centerline, up to 133' AGL/157' MSL. Trees beginning 2210' from DER, 63' right of centerline, up to 131' AGL/154' MSL. Trees beginning 2298' from DER, 153' left of centerline, up to 141' AGL/166' MSL. |
| Rwy 20: | Vegetation 2' from DER, 130' left of centerline, 2' AGL/31' MSL. Vegetation 2' from DER, 199' right of centerline, 3' AGL/31' MSL. Vegetaton 44' from DER, 198' right of centerline, 4' AGL/32' MSL. Trees, vegetation, fence beginning 51' from DER, 129' right of centerline, up to 86' AGL/113' MSL. Fence 68' from DER, 350' left of centerline, 7' AGL/35' MSL. Trees beginning 152' from DER, 210' left of centerline, up to 92' AGL/120' MSL. Trees beginning 621' from DER, 197' right of centerline, up to 93' AGL/121' MSL. Trees beginning 917' from DER, 288' left of centerline, up to 99' AGL/127' MSL. Trees beginning 984' from DER, 197' left of centerline, up to 101' AGL/130' MSL. Trees beginning 1041' from DER, 267' right of centerline, up to 94' AGL/122' MSL. Trees beginning 1079' from DER, 261' right of centerline, up to 100' AGL/127' MSL. Trees beginning 1100' from DER, 261' left of centerline, up to 106' AGL/133' MSL. Trees beginning 1159' from DER, 2' left of centerline, up to 121' AGL/148' MSL. Trees beginning 1592' from DER, 462' right of centerline, up to 112' AGL/141' MSL. Trees beginning 1691' from DER, 35' right of centerline, up to 114' AGL/142' MSL. Trees beginning 2141' from DER, 9' right of centerline, up to 121' AGL/148' MSL. Trees beginning 2596' from DER, 688' right of centerline, up to 129' AGL/155' MSL. Trees beginning 2758' from DER, 23' right of centerline, up to 144' AGL/169' MSL. Trees beginning 3516' from DER, 308' left of centerline, up to 124' AGL/149' MSL. Trees beginning 3703' from DER, 90' left of centerline, up to 130' AGL/155' MSL. Tree 5387' from DER, 1409' right of centerline, 147' AGL/172' MSL. |
| (CONTINUED ON FOLLOWING PAGE) | |

(CONTINUED)

TAKEOFF OBSTACLE NOTES

Rwy 29: Vegetation 1' from DER, 457' left of centerline, 4' AGL/37' MSL.
Navajds beginning 9' from DER, 54' right of centerline, up to 2' AGL/38' MSL.
Navajds beginning 9' from DER, 64' left of centerline, up to 2' AGL/38' MSL.
Navaid 10' from DER, 152' left of centerline, 5' AGL/40' MSL.
Navaid, vegetation beginning 10' from DER, 140' right of centerline, up to 5' AGL/40' MSL.
Tree 139' from DER, 312' right of centerline, 6' AGL/42' MSL.
Tree 177' from DER, 385' left of centerline, 16' AGL/49' MSL.
Tree 263' from DER, 473' left of centerline, 18' AGL/51' MSL.
Trees beginning 354' from DER, 360' left of centerline, up to 30' AGL/63' MSL.
Trees beginning 650' from DER, 368' left of centerline, up to 35' AGL/68' MSL.
Tree 923' from DER, 631' right of centerline, 78' AGL/111' MSL.
Tree 946' from DER, 396' right of centerline, 88' AGL/121' MSL.
Trees beginning 1054' from DER, 280' right of centerline, up to 95' AGL/130' MSL.
Trees beginning 1117' from DER, 167' left of centerline, up to 68' AGL/101' MSL.
Trees beginning 1146' from DER, 147' right of centerline, up to 97' AGL/133' MSL.
Trees beginning 1318' from DER, 430' left of centerline, up to 82' AGL/116' MSL.
Trees beginning 1400' from DER, 486' left of centerline, up to 87' AGL/121' MSL.
Trees beginning 1493' from DER, 145' right of centerline, up to 103' AGL/139' MSL.
Tree 1896' from DER, 994' left of centerline, 90' AGL/124' MSL.
Trees beginning 1930' from DER, 118' left of centerline, up to 121' AGL/156' MSL.
Trees beginning 2220' from DER, 117' left of centerline, up to 134' AGL/169' MSL.
Trees beginning 2383' from DER, 165' right of centerline, up to 108' AGL/144' MSL.
Trees beginning 2680' from DER, 431' left of centerline, up to 135' AGL/170' MSL.
Trees beginning 2835' from DER, 207' left of centerline, up to 139' AGL/174' MSL.
Trees beginning 3552' from DER, 352' right of centerline, up to 121' AGL/158' MSL.
Trees beginning 4183' from DER, 1024' left of centerline, up to 140' AGL/176' MSL.
Trees beginning 4474' from DER, 1071' left of centerline, up to 141' AGL/177' MSL.
Trees beginning 4741' from DER, 127' left of centerline, up to 159' AGL/195' MSL.
Tree 5082' from DER, 24' right of centerline, 133' AGL/171' MSL.
Trees beginning 5326' from DER, 188' right of centerline, up to 142' AGL/181' MSL.
Trees beginning 5350' from DER, 21' left of centerline, up to 169' AGL/204' MSL.
Trees beginning 5448' from DER, 86' right of centerline, up to 148' AGL/186' MSL.
Trees beginning 5551' from DER, 14' left of centerline, up to 175' AGL/210' MSL.
Trees beginning 5668' from DER, 39' right of centerline, up to 151' AGL/188' MSL.
Trees beginning 5760' from DER, 3' right of centerline, up to 153' AGL/ 191' MSL.
Trees beginning 5844' from DER, 85' right of centerline, up to 156' AGL/193' MSL.
Trees beginning 5893' from DER, 64' right of centerline, up to 157' AGL/195' MSL.
Trees beginning 1 NM from DER, 87' right of centerline, up to 174' AGL/212' MSL.

(CONTINUED ON FOLLOWING PAGE)

(CONTINUED)

TAKEOFF OBSTACLE NOTES

Rwy 2: Vegetation beginning 6' from DER, 135' left of centerline, up to 6' AGL/35' MSL.
Vegetation 11' from DER, 262' right of centerline, 4' AGL/33' MSL.
Vegetation 32' from DER, 129' right of centerline, 3' AGL/35' MSL.
Vegetation, trees beginning 56' from DER, 178' right of centerline, up to 8' AGL/39' MSL.
Vegetation beginning 99' from DER, 173' left of centerline, up to 6' AGL/37' MSL.
Vegetation 112' from DER, 451' left of centerline, 7' AGL/38' MSL.
Tree 703' from DER, 164' right of centerline, 22' AGL/51' MSL.
Tree 1014' from DER, 747' right of centerline, 35' AGL/63' MSL.
Tree 1088' from DER, 314' left of centerline, 44' AGL/70' MSL.
Trees beginning 1089' from DER, 199' right of centerline, up to 67' AGL/99' MSL.
Tree 1118' from DER, 233' left of centerline, 67' AGL/99' MSL.
Tree 1140' from DER, 184' left of centerline, 70' AGL/101' MSL.
Tree 1142' from DER, 399' left of centerline, 86' AGL/121' MSL.
Trees beginning 1157' from DER, 364' right of centerline, up to 107' AGL/140' MSL.
Trees beginning 1214' from DER, 13' right of centerline, up to 113' AGL/145' MSL.
Trees beginning 1222' from DER, 177' left of centerline, up to 105' AGL/140' MSL.
Tree 1339' from DER, 517' left of centerline, 110' AGL/142' MSL.
Trees beginning 1350' from DER, 13' left of centerline, up to 114' AGL/147' MSL.
Trees beginning 2872' from DER, 83' left of centerline, up to 115' AGL/149' MSL.
Trees beginning 3954' from DER, 78' right of centerline, up to 114' AGL/146' MSL.
Trees beginning 4206' from DER, 1324' left of centerline, up to 122' AGL/157' MSL.
Tree 1.9 NM from DER, 382' right of centerline, 158' AGL/365' MSL.
Trees beginning 1.9 NM from DER, 410' left of centerline, up to 136' AGL/369' MSL.
Tree 2 NM from DER, 810' right of centerline, 154' AGL/366' MSL.
Trees beginning 2 NM from DER, 57' right of centerline, up to 173' AGL/411' MSL.
Tree 2 NM from DER, 2653' left of centerline, 59' AGL/386' MSL.
Tree 2 NM from DER, 2050' left of centerline, 121' AGL/413' MSL.
Tree 2 NM from DER, 3311' left of centerline, 128' AGL/447' MSL.
Trees beginning 2.1 NM from DER, 39' left of centerline, up to 128' AGL/473' MSL.
Tree 2.1 NM from DER, 2107' right of centerline, 147' AGL/420' MSL.
Trees beginning 2.1 NM from DER, 846' right of centerline, up to 146' AGL/423' MSL.
Trees beginning 2.2 NM from DER, 2437' left of centerline, up to 86' AGL/529' MSL.
Tree 2.2 NM from DER, 472' right of centerline, 137' AGL/447' MSL.
Tree 2.2 NM from DER, 3161' right of centerline, 120' AGL/462' MSL.
Trees beginning 2.2 NM from DER, 2054' left of centerline, up to 144' AGL/589' MSL.
Trees beginning 2.2 NM from DER, 1069' right of centerline, up to 101' AGL/477' MSL.
Trees beginning 2.3 NM from DER, 1251' left of centerline, up to 153' AGL/633' MSL.
Trees beginning 2.3 NM from DER, 670' right of centerline, up to 92' AGL/531' MSL.
Trees beginning 2.3 NM from DER, 98' left of centerline, up to 94' AGL/642' MSL.
Trees beginning 2.3 NM from DER, 1340' right of centerline, up to 119' AGL/591' MSL.
Tree 2.4 NM from DER, 2405' left of centerline, 111' AGL/744' MSL.
Trees beginning 2.4 NM from DER, 146' right of centerline, up to 193' AGL/683' MSL.
Trees beginning 2.4 NM from DER, 1354' left of centerline, up to 171' AGL/851' MSL.
Trees beginning 2.4 NM from DER, 404' left of centerline, up to 189' AGL/919' MSL.
Tree 2.4 NM from DER, 1934' right of centerline, 135' AGL/780' MSL.
Tree 2.4 NM from DER, 2671' right of centerline, up to 133' AGL/781' MSL.
Trees beginning 2.5 NM from DER, 796' right of centerline, up to 171' AGL/953' MSL.
Tree 2.5 NM from DER, 2715' right of centerline, 155' AGL/962' MSL.
Tree 2.5 NM from DER, 2236' right of centerline, 153' AGL/967' MSL.
Trees beginning 2.5 NM from DER, 151' right of centerline, up to 161' AGL/977' MSL.

AK, 27 NOV 2025 to 22 JAN 2026

AK, 27 NOV 2025 to 22 JAN 2026