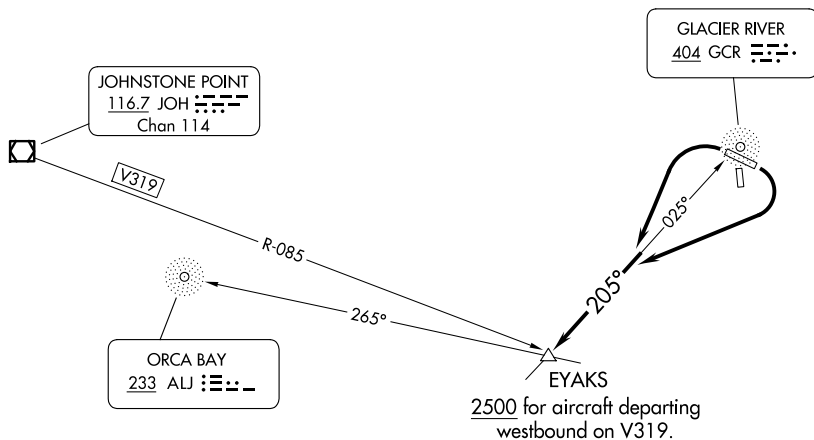


EYAKS SIX DEPARTURE

MERLE K (MUDHOLE) SMITH (CDV) (PACV)
CORDOVA, ALASKA

ANCHORAGE CENTER
119.3 133.6 269.4
JUNEAU RADIO
122.2 123.6 (CTAF)
ASOS
134.8

**TOP ALTITUDE:
ASSIGNED BY ATC**



TAKEOFF MINIMUMS
Rwys 16, 34: NA-ATC.
Rwys 9, 27: Standard.

NOTE: Do not exceed 210K until established on 205° bearing from GCR NDB.
NOTE: ADF required.

NOTE: Chart not to scale.

DEPARTURE ROUTE DESCRIPTION

TAKEOFF RUNWAY 9: Climbing right turn to intercept bearing 205° from GCR NDB to EYAKS INT, thence. . .

TAKEOFF RUNWAY 27: Climbing left turn to intercept bearing 205° from GCR NDB to EYAKS INT, thence. . .

...on assigned route, maintain ATC assigned altitude.

EYAKS SIX DEPARTURE
(EYAKS6.EYAKS) 29MAR18

CORDOVA, ALASKA
MERLE K (MUDHOLE) SMITH (CDV)(PACV)

AK, 27 NOV 2025 to 22 JAN 2026