

NDB/DME TNC 347 Chan 119 (Y)	APCH CRS 343°	Rwy Idg TDZE Arpt Elev 4702 273 273
--	-------------------------	---

[USAF]

TIN CITY LRRS (PATC)

▼ * Circling not authorized W of Rwy 17-35.
Night operations not authorized.

MISSED APPROACH: Climbing right turn to 3600 intercept TNC 163° bearing to WNGCO and hold. Continue climb-in-hold to 3600.

ANCHORAGE CENTER
133.3 290.4

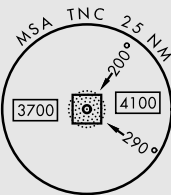
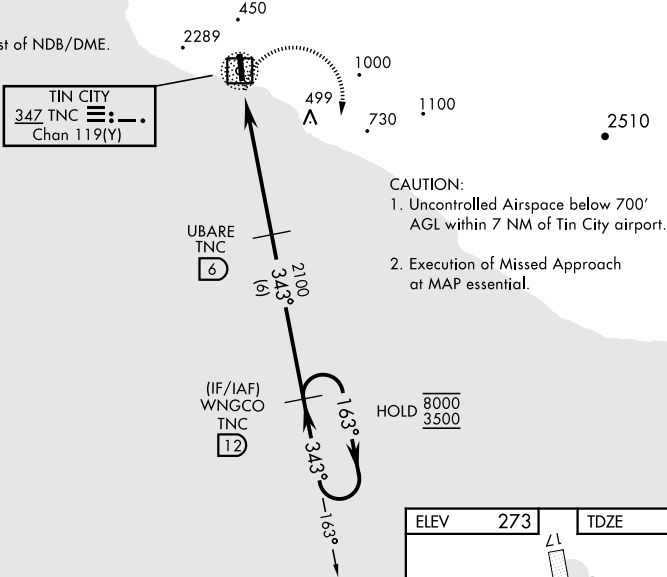
TIN CITY RCO (NOME RADIO)
122.6

UNICOM
126.2 (CTAF)

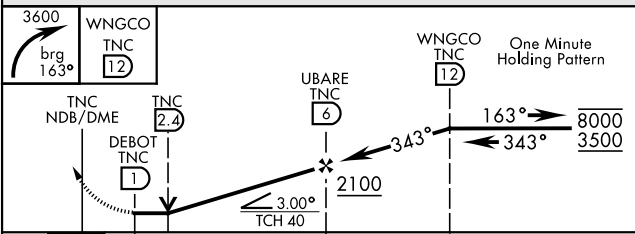
MILITARY CERTIFIED
AIRCREWS OR AUTHORIZED
CONTRACT AIRCRAFT ONLY

NOT FOR CIVIL USE

CAUTION:
2289' mountain 2 NM West of NDB/DME.



EMERG SAFE ALT 100 NM 7000



CATEGORY	A	B	C	D
S-35	980-1 707 (800-1)		980-2 707 (800-2)	NOT AUTHORIZED
CIRCLING*	980-1 707 (800-1)		980-2 707 (800-2)	NOT AUTHORIZED

