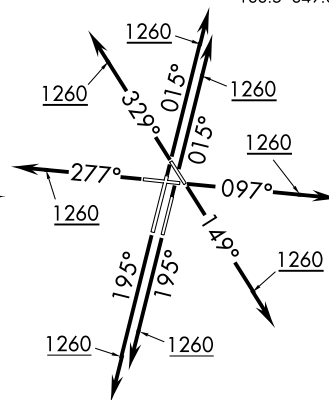


OS  
/IGATION  
FORMATION  
3000

(OBENE3,OBENE) 18312  
 OBENE THREE DEPARTURE (RNAV) AL-5104 (FAA)  
 CHICAGO/WEST CHICAGO, ILLINOIS  
 DUPAGE (DP A)

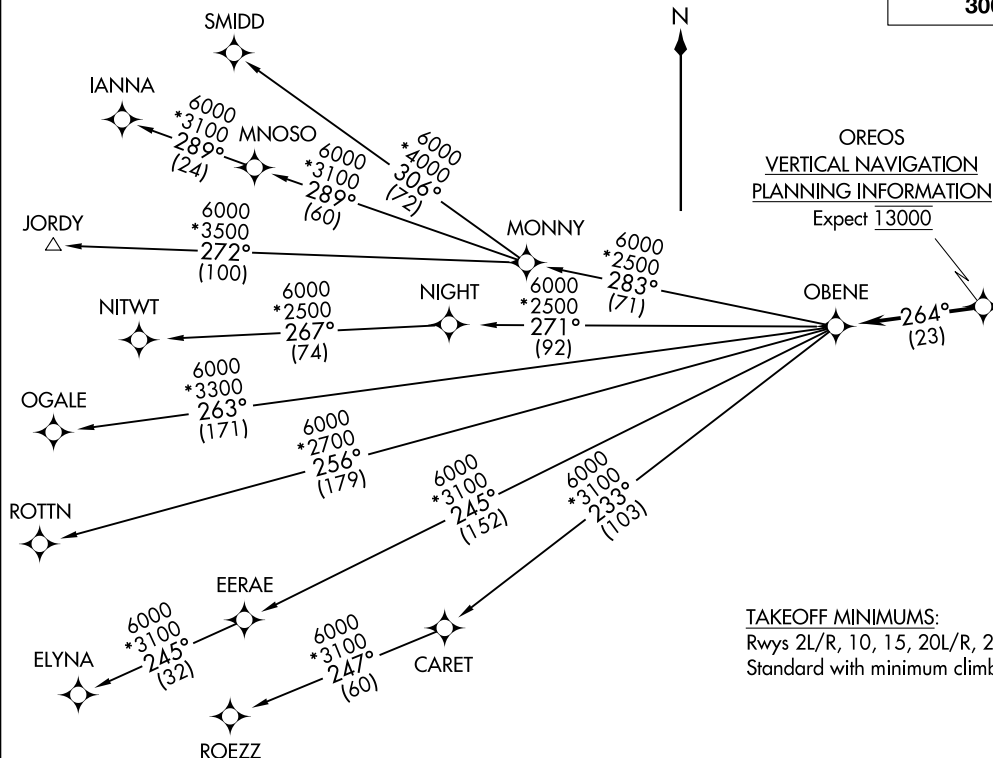


Rwys 2L/R, 10, 15, 20L/R, 28, 33:  
Standard with minimum climb of 500' per NM to 1260.

NOTE: RADAR required.  
NOTE: DME/DME/IRU or GPS required.  
NOTE: RNAV 1.  
NOTE: Turbojet departures maintain 250K until advised by ATC.

(NARRATIVE ON FOLLOWING PAGE)

NOTE: Chart not to scale.

CHICAGO/WEST CHICAGO, ILLINOIS  
DUPAGE (DPA)



DEPARTURE ROUTE DESCRIPTION

TAKEOFF RUNWAYS 2L/R: Climb heading 015° to 1260, then continue climb on 015° heading or as assigned by ATC, for vectors to OREOS. Thence . . . .

TAKEOFF RUNWAY 10: Climb heading 097° to 1260, then continue climb on 097° heading or as assigned by ATC, for vectors to OREOS. Thence . . . .

TAKEOFF RUNWAY 15: Climb heading 149° to 1260, then continue climb on 149° heading or as assigned by ATC, for vectors to OREOS. Thence . . . .

TAKEOFF RUNWAYS 20L/R: Climb heading 195° to 1260, then continue climb on 195° heading or as assigned by ATC, for vectors to OREOS. Thence . . . .

TAKEOFF RUNWAY 28: Climb heading 277° to 1260, then continue climb on 277° heading or as assigned by ATC, for vectors to OREOS. Thence . . . .

TAKEOFF RUNWAY 33: Climb heading 329° to 1260, then continue climb on 329° heading or as assigned by ATC, for vectors to OREOS. Thence . . . .

. . . . on depicted route to OBENE, maintain 3000. Expect filed altitude 10 minutes after departure.

- ELYNA TRANSITION (OBENE3.ELYNA)
- IANNA TRANSITION (OBENE3.IANNA)
- JORDY TRANSITION (OBENE3.JORDY)
- MNOSO TRANSITION (OBENE3.MNOSO): For Minneapolis terminal area arrivals or assigned by ATC.
- NITWT TRANSITION (OBENE3.NITWT)
- OGALE TRANSITION (OBENE3.OGALE)
- ROTTN TRANSITION (OBENE3.ROTTN)
- ROEZZ TRANSITION (OBENE3.ROEZZ)
- SMIDD TRANSITION (OBENE3.SMIDD)