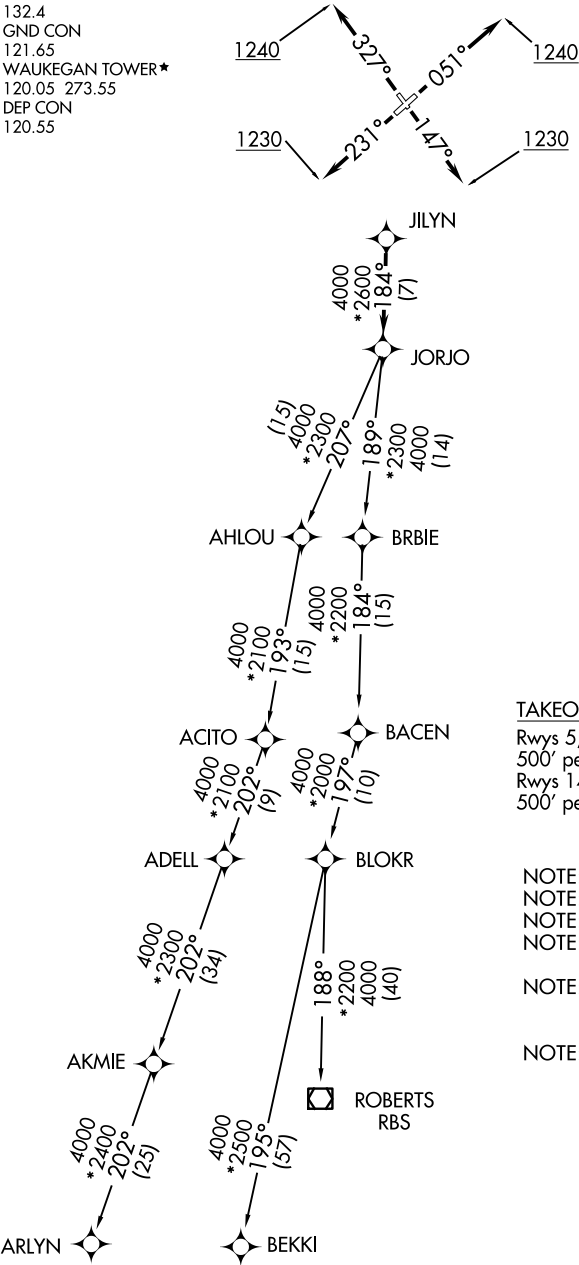


ATIS
132.4
GND CON
121.65
WAUKEGAN TOWER*
120.05 273.55
DEP CON
120.55

TOP ALTITUDE:
3000



TAKEOFF MINIMUMS
Rwys 5, 32: Standard with minimum climb of 500' per NM to 1240.
Rwys 14, 23: Standard with minimum climb of 500' per NM to 1230.

- NOTE: RNAV 1.
NOTE: RADAR required.
NOTE: DME/DME/IRU or GPS required.
NOTE: TURBOJET departures maintain 250K until advised by ATC.
NOTE: AKMIE transition: for aircraft inbound to BML, SPI, or PIA, or as assigned by ATC.
NOTE: ROBERTS transition: for aircraft inbound to CMI or STL, or as assigned by ATC.

(NARRATIVE ON FOLLOWING PAGE)

NOTE: Chart not to scale.

EC-3, 27 NOV 2025 to 25 DEC 2025

EC-3, 27 NOV 2025 to 25 DEC 2025



DEPARTURE ROUTE DESCRIPTION

TAKEOFF RWY 5: Climb heading 051° or as assigned by ATC to at or above 1240,
expect vectors to JILYN, thence
TAKEOFF RWY 14: Climb heading 147° or as assigned by ATC to at or above 1230,
expect vectors to JILYN, thence
TAKEOFF RWY 23: Climb heading 231° or as assigned by ATC to at or above 1230,
expect vectors to JILYN, thence
TAKEOFF RWY 32: Climb heading 327° or as assigned by ATC to at or above 1240,
expect vectors to JILYN, thence

. . . . on track 184° to JORJO, then on (transition), maintain 3000,
expect filed altitude ten minutes after departure.

- AKMIE TRANSITION (JORJO5.AKMIE)
- ARLYN TRANSITION (JORJO5.ARLYN)
- BEKKI TRANSITION (JORJO5.BEKKI)
- ROBERTS TRANSITION (JORJO5.RBS)

EC-3, 27 NOV 2025 to 25 DEC 2025

EC-3, 27 NOV 2025 to 25 DEC 2025