


LA PORTE MUNI (T41)  
LA PORTE, TEXAS

## LUFKIN FOUR DEPARTURE

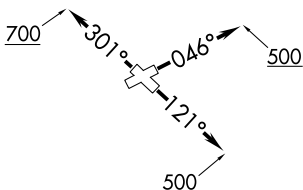
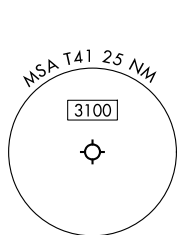
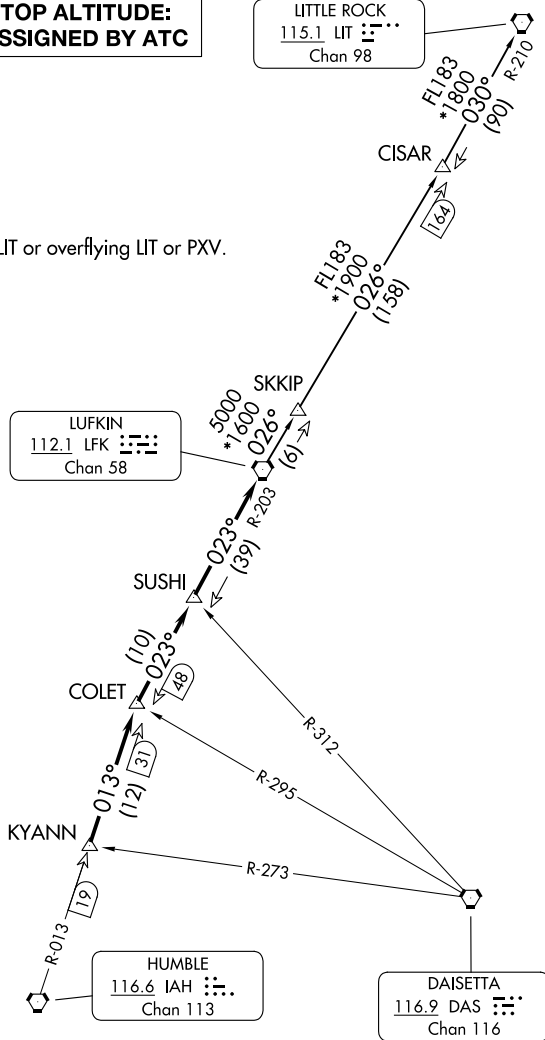
HOUSTON DEP CON  
134.45 284.0  
CLNC DEL  
125.6  
CTAF  
122.7

**TOP ALTITUDE:  
ASSIGNED BY ATC**

LITTLE ROCK  
115.1 LIT   
Chan 98

RADAR and DME required.

NOTE: For aircraft destined LIT or overflying LIT or PXV.



## TAKEOFF MINIMUMS

Rwys 12, 23, 30: Standard.

Rwy 5: Standard with minimum  
climb of 205'/NM to 500.

NOTE: Chart not to scale.

(CONTINUED ON FOLLOWING PAGE)

LUFKIN FOUR DEPARTURE

(LFK4.LFK) 27NOV25

LA PORTE, TEXAS  
LA PORTE MUNI (T41)

SC-5, 27 NOV 2025 to 25 DEC 2025



DEPARTURE ROUTE DESCRIPTION

TAKEOFF RUNWAY 5: Climb on heading 046° to 500 before turning. When entering controlled airspace, climb on assigned heading for RADAR vectors to KYANN INT. Maintain ATC assigned altitude. Expect filed altitude 10 minutes after departure, thence. . .

TAKEOFF RUNWAY 12: Climb on heading 121° to 500 before turning. When entering controlled airspace, climb on assigned heading for RADAR vectors to KYANN INT. Maintain ATC assigned altitude. Expect filed altitude 10 minutes after departure, thence. . .

TAKEOFF RUNWAY 23: When entering controlled airspace, climb on assigned heading for RADAR vectors to KYANN INT. Maintain ATC assigned altitude. Expect filed altitude 10 minutes after departure, thence. . .

TAKEOFF RUNWAY 30: Climb on heading 301° to 700 before turning. When entering controlled airspace, climb on assigned heading for RADAR vectors to KYANN INT. Maintain ATC assigned altitude. Expect filed altitude 10 minutes after departure, thence. . .

. . .on IAH R-013 to COLET INT, then on depicted route to LFK VORTAC.

LITTLE ROCK TRANSITION (LFK4.LIT): From over LFK VORTAC on LFK R-026 to CISAR, then on LIT R-210 to LIT VORTAC.

SC-5, 27 NOV 2025 to 25 DEC 2025

SC-5, 27 NOV 2025 to 25 DEC 2025