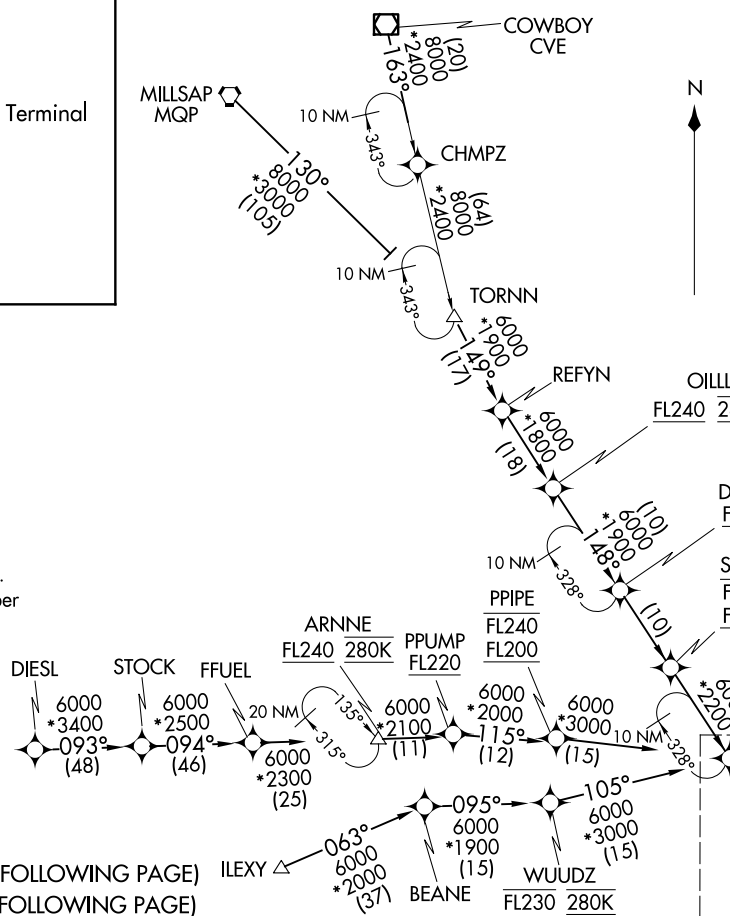


HOUSTON APP CON  
 124.35 316.15  
 D-ATIS  
 124.05



See following  
 page for  
 arrival route

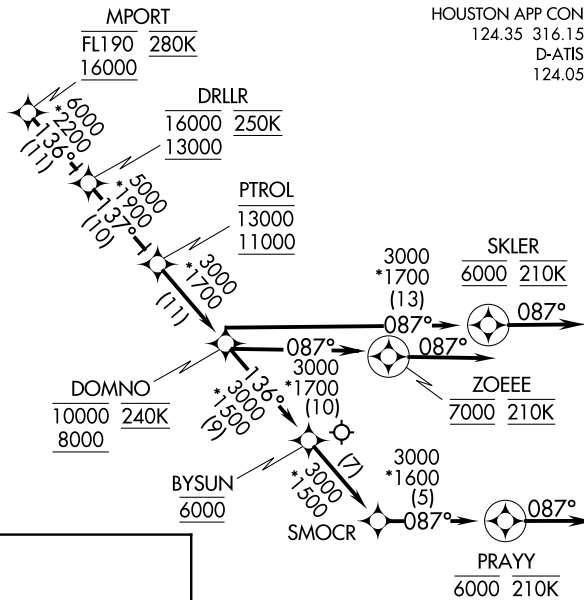
- COWBOY TRANSITION (CVE.DRLR5):  
DIESEL TRANSITION (DIESEL.DRLR5):  
ILEXY TRANSITION (ILEXY.DRLR5): Austin Terminal  
 Area Departures only.  
MILLSAP TRANSITION (MQP.DRLR5):  
OIILL TRANSITION (OIILL.DRLR5):  
TORN TRANSITION (TORN.DRLR5):

- NOTE: RADAR required.  
 NOTE: RNAV 1.  
 NOTE: DME/DME/IRU or GPS required.  
 NOTE: Turbojet and turboprop aircraft capable  
 of 280K or greater only.  
 NOTE: Fly the Runway 26R transition; Houston  
 Approach control may assign a different  
 transition on initial contact.  
 NOTE: Corresponding RNAV STAR is GUSHR.  
 Expect GUSHR when IAH is landing east.  
 NOTE: Turbojet aircraft descend via mach number  
 until intercepting 280K. Maintain 280K  
 until slowed by the STAR.

(NOTES ON THE FOLLOWING PAGE)  
 (NARRATIVE ON FOLLOWING PAGE)

NOTE: Chart not to scale.

- NOTE: RADAR required.  
NOTE: RNAV 1.  
NOTE: DME/DME/IRU or GPS required.  
NOTE: Turbojet and turboprop aircraft capable of 280K or greater only.  
NOTE: Fly the Runway 26R transition; Houston Approach control may assign a different transition on initial contact.  
NOTE: Corresponding RNAV STAR is GUSHR. Expect GUSHR when IAH is landing east.  
NOTE: Turbojet aircraft descend via mach number until intercepting 280K. Maintain 280K until slowed by the STAR.



### ARRIVAL ROUTE DESCRIPTION

From MPORT on track 136° to cross DRLLR between 13000 and 16000 and at 250K, then on track 137° to cross PTROL between 11000 and 13000, then on track 137° to cross DOMNO between 8000 and 10000 and at 240K.

LANDING RUNWAY 26L: From DOMNO on track 087° to cross ZOEEE at 7000 and at 210K, then on track 087°. Expect vectors to final approach course.

LANDING RUNWAY 26R: From DOMNO on track 087° to cross SKLER at 6000 and at 210K, then on track 087°. Expect vectors to final approach course.

LANDING RUNWAY 27: From DOMNO on track 136° to cross BYSUN at 6000, then on track 136° to SMOCR, then on track 087° to cross PRAYY at 6000 and at 210K, then on track 087°. Expect vectors to final approach course.

NOTE: Chart not to scale.