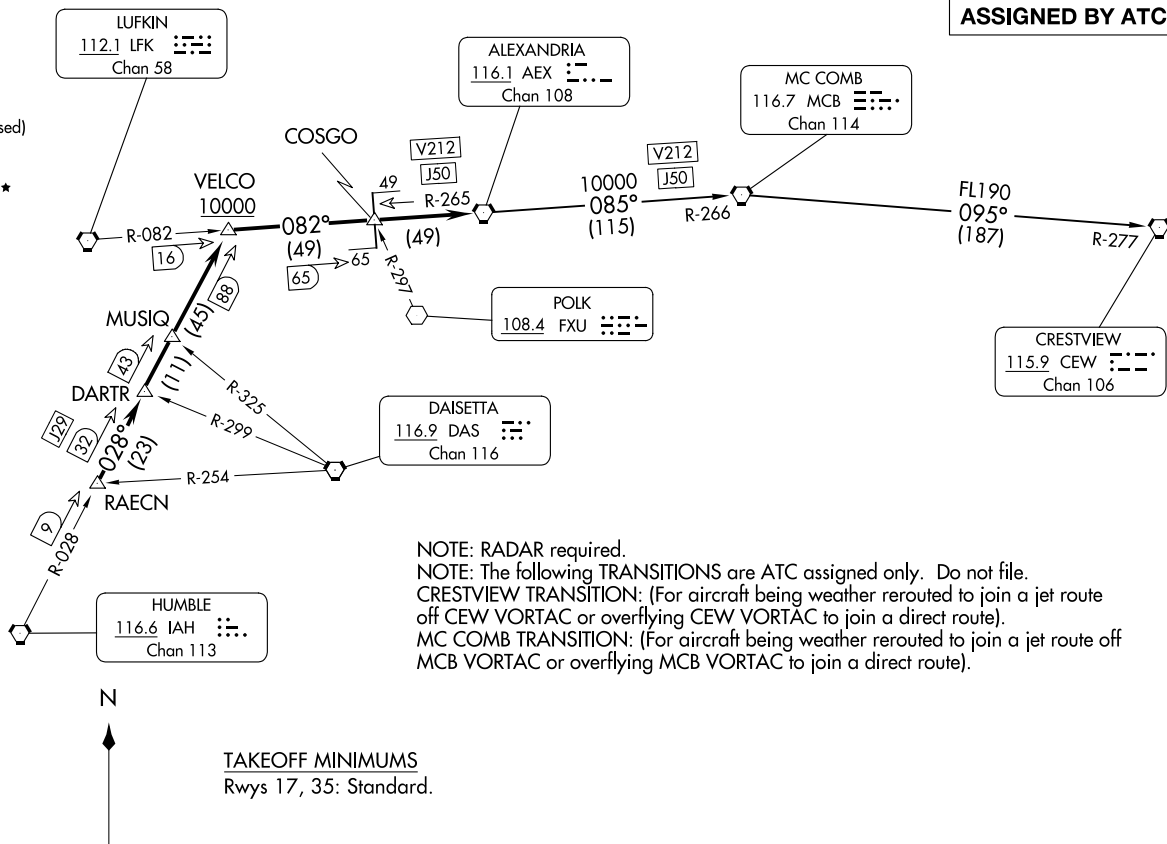


(AEX3.AEX) 07OCT21

ALEXANDRIA THREE DEPARTURE

HOUSTON, TEXAS
SUGAR LAND RGNL (SGR)

HOUSTON DEP CON
123.8 257.7
ATIS
118.125
CLNC DEL
121.4
CLNC DEL
119.25 (When twr closed)
GND CON
121.4
SUGARLAND TOWER ★
118.65 (CTAF)



(CONTINUED ON FOLLOWING PAGE)

(AEX3.AEX) 25331

AL-5537 (FAA)

HOUSTON, TEXAS
SUGAR LAND RGNL (SGR)



DEPARTURE ROUTE DESCRIPTION

TAKEOFF RUNWAY 17: Climb on heading 170° to 1500 before turning. When entering controlled airspace, climb on assigned heading for RADAR vectors to RAECN INT. Maintain ATC assigned altitude. Expect filed altitude 10 minutes after departure, thence. . . .

TAKEOFF RUNWAY 35: Climb on heading 350° to 1100 before turning. When entering controlled airspace, climb on assigned heading for RADAR vectors to RAECN INT. Maintain ATC assigned altitude. Expect filed altitude 10 minutes after departure, thence. . . .

. . . .on IAH R-028 to VELCO INT, cross VELCO INT at or above 10000, then right turn on LFK R-082 and AEX R-265 to AEX VORTAC.

CRESTVIEW TRANSITION (AEX3.CEW): From over AEX VORTAC on AEX R-085 and MCB R-266 to MCB VORTAC, then on MCB R-095 and CEW R-277 to CEW VORTAC.

MC COMB TRANSITION (AEX3.MCB): From over AEX VORTAC on AEX R-085 and MCB R-266 to MCB VORTAC.