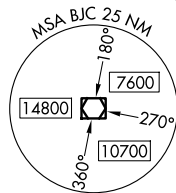


DENVER DEP CON  
125.12 263.02  
ATIS  
126.25  
CLNC DEL  
132.6



**TOP ALTITUDE:  
ASSIGNED BY ATC.**

RADAR required.



ROCK SPRINGS  
116.0 OCS  
Chan 107

LARAMIE  
117.6 LAR  
Chan 123

CHEYENNE  
113.1 CYS  
Chan 78

SIDNEY  
115.9 SNY  
Chan 106

GILL  
114.2 GIL  
Chan 89

MILE HIGH  
114.7 DVV  
Chan 94

AKRON  
114.4 AKO  
Chan 91

HAYES CENTER  
117.7 HCT  
Chan 124

MEEKER  
115.2 EKR  
Chan 99

JEFFCO  
115.4 BJC  
Chan 101

THURMAN  
112.9 TXC  
Chan 76

KREMMLING  
113.8 RLG  
Chan 85

DENVER  
117.9 DEN  
Chan 126

FALCON  
116.3 FQF  
Chan 110

GOODLAND  
115.1 GLD  
Chan 98

GRAND JUNCTION  
112.4 JNC  
Chan 71

BLACK FOREST  
112.5 BRK  
Chan 72

HUGO  
112.1 HGO  
Chan 58

BLUE MESA  
114.9 HBU  
Chan 96

PUEBLO  
116.7 PUB  
Chan 114

TAKEOFF MINIMUMS  
All runways: Standard.

GARDEN CITY  
113.3 GCK  
Chan 80

NOTE: Chart not to scale.

(CONTINUED ON FOLLOWING PAGE)



DEPARTURE ROUTE DESCRIPTION

TAKEOFF RUNWAY 3: Climb to assigned altitude and heading between 350° CW 150° from DER, thence. . . .

TAKEOFF RUNWAYS 12L/R: Climb to assigned altitude and heading between 150° CCW 350° from DER, thence. . . .

TAKEOFF RUNWAY 21: Climbing left turn to assigned altitude and heading between 150° CCW to 024° from DER, thence. . . .

TAKEOFF RUNWAYS 30L/R: Climbing right turn to assigned altitude and heading between 350° CW 113° from DER, thence. . . .

. . . .RADAR vectors to assigned route. Expect filed altitude 10 minutes after departure.

LOST COMMUNICATIONS: If no transmissions are received within one minute after departure, maintain assigned heading until 7000, then climb to filed altitude direct to DEN VOR/DME, then on assigned route. If filed altitude is above 10000, cross DEN VOR/DME at or above 11000.

SW-1, 27 NOV 2025 to 25 DEC 2025

SW-1, 27 NOV 2025 to 25 DEC 2025