

(ECHO01.ECH00) 20086

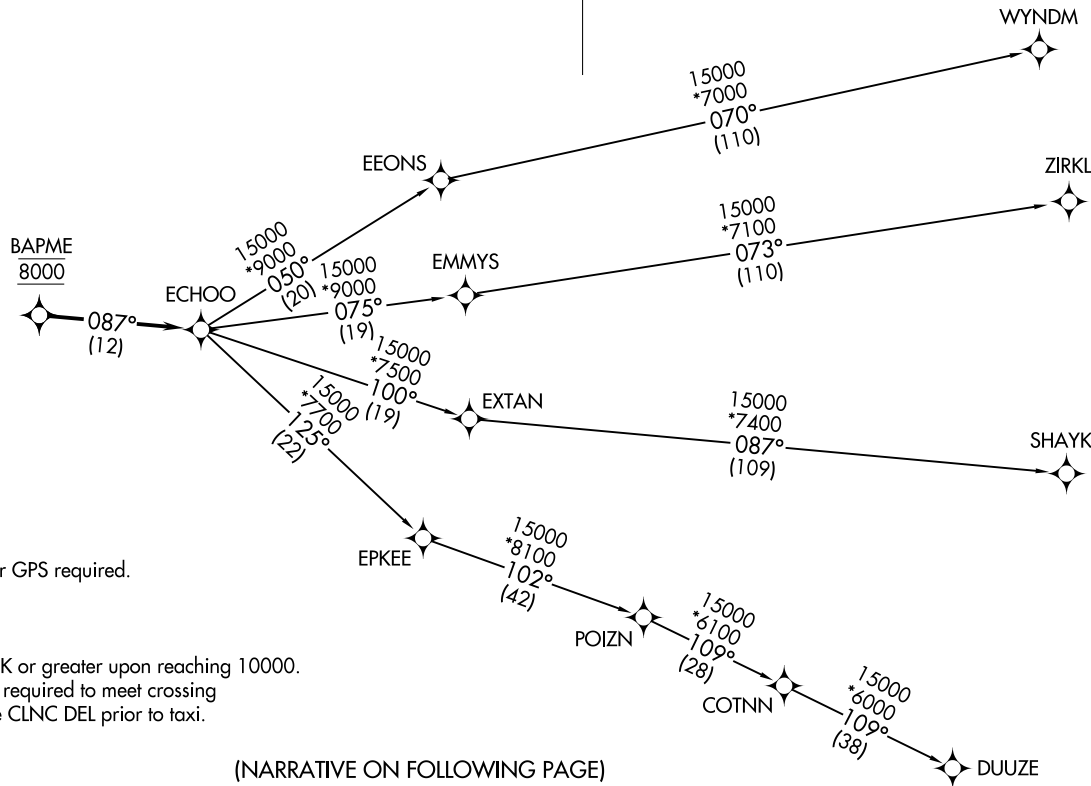
ECHOO ONE DEPARTURE (RNAV)

AL-5677 (FAA)

NORTHERN COLORADO RGNL (FNL)  
FORT COLLINS/LOVELAND, COLORADO

CLNC DEL 120.25  
DENVER DEP CON 134.85 251.125

TOP ALTITUDE:  
FL230



TAKEOFF MINIMUMS

Rwys 6, 24: NA.

Rwys 15, 33: Standard.

NOTE: DME/DME/IRU or GPS required.

NOTE: RNAV 1.

NOTE: Turbojets only.

NOTE: RADAR required.

NOTE: Accelerate to 250K or greater upon reaching 10000.  
If slower speed is required to meet crossing  
restrictions advise CLNC DEL prior to taxi.

NOTE: Chart not to scale.

(NARRATIVE ON FOLLOWING PAGE)

SW-1, 27 NOV 2025 to 25 DEC 2025

ECHOO ONE DEPARTURE (RNAV)

(ECHO01.ECH00) 26MAR20

FORT COLLINS/LOVELAND, COLORADO  
NORTHERN COLORADO RGNL (FNL)



DEPARTURE ROUTE DESCRIPTION

TAKEOFF RUNWAY 15: Climb on a heading between 350° CW 180° as assigned by ATC. Thence. . . .

TAKEOFF RUNWAY 33: Climbing right turn on a heading between 350° CW 150° as assigned by ATC. Thence. . . .

. . . .expect RADAR vectors to cross BAPME at 8000 then on track 087° to ECHOO, then on (transition) maintain FL230 or filed lower altitude. Expect higher filed altitude ten minutes after departure.

- DUUZE TRANSITION (ECHOO1.DUUZE)
- SHAYK TRANSITION (ECHOO1.SHAYK)
- WYNDM TRANSITION (ECHOO1.WYNDM)
- ZIRKL TRANSITION (ECHOO1.ZIRKL)

SW-1, 27 NOV 2025 to 25 DEC 2025

SW-1, 27 NOV 2025 to 25 DEC 2025