

(DUNNN.DUNNN6) 17APR25

DUNNN SIX ARRIVAL (RNAV) Transition Routes

DENVER, COLORADO

See following page  
for Arrival RoutesDUNNN  
FL220  
FL190

4 NM

14000  
\*8100  
302°  
(24)

14000  
\*8200  
319°  
(24)

XPAIN

LAYLA

12 NM

17000  
\*8200  
306°  
(45)

CAARS

MORSN  
FL300

NOTE: Jet aircraft only.

NOTE: Expect runway assignment from DENVER TRACON upon initial contact.

NOTE: Aircraft landing BJC: ATC assigned only.

RNAV 1 - DME/DME/IRU or GPS.

RADAR required.

DENVER CENTER  
133.4 377.175  
SPRINGS APP CON  
124.0 257.875  
DENVER APP CON  
128.45 251.075  
APA ATIS  
120.3  
BJC ATIS  
126.25  
CENTENNIAL TOWER  
118.9  
METRO TOWER ★  
118.6 233.7

FRAAY

CAARS TRANSITION (CAARS.DUNNN6)

FRAAY TRANSITION (FRAAY.DUNNN6)

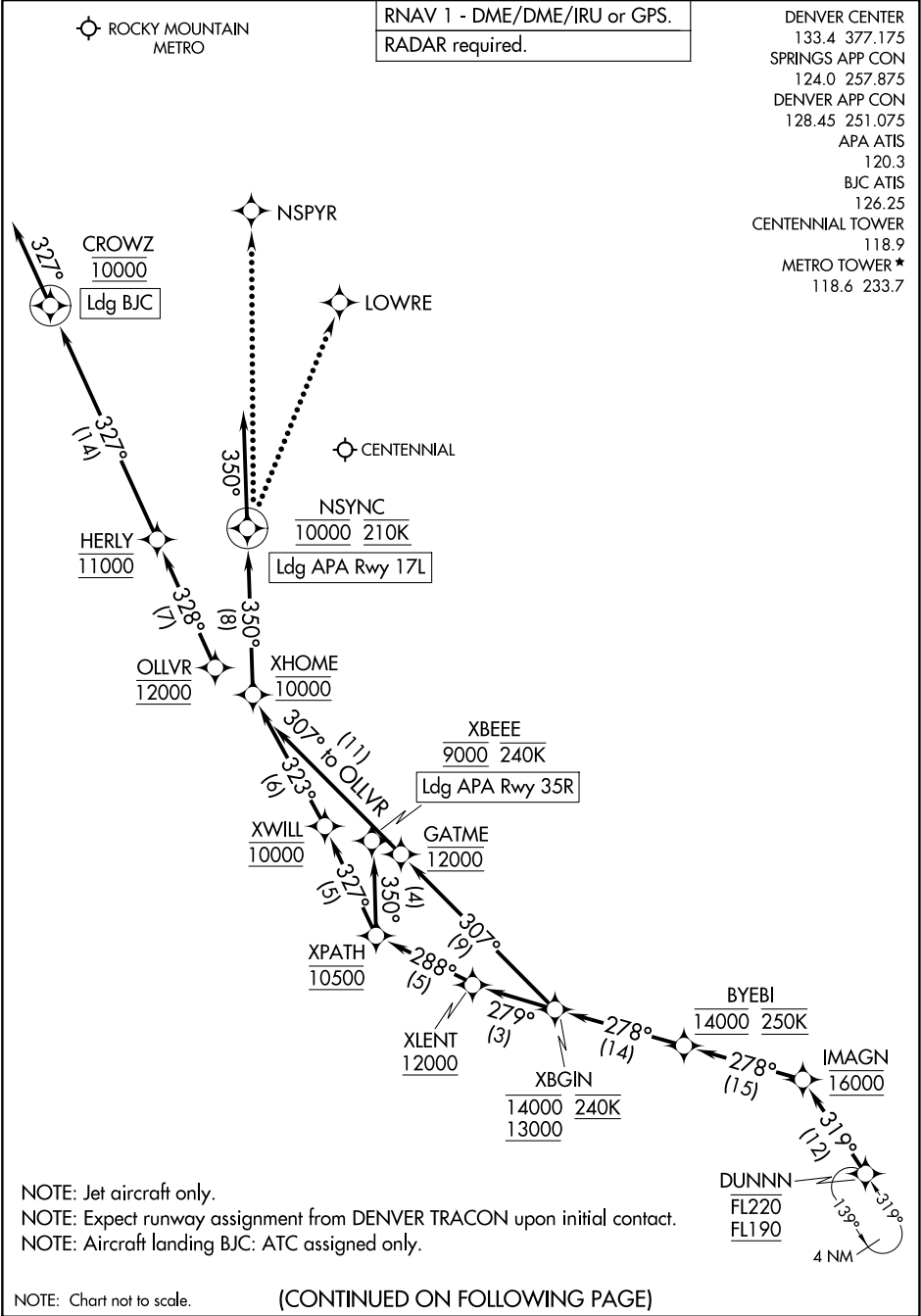
NOTE: Chart not to scale.

(CONTINUED ON FOLLOWING PAGE)

(DUNNN.DUNNN6) 25107

AL-5715 (FAA)

DENVER, COLORADO



SW-1, 27 NOV 2025 to 25 DEC 2025

SW-1, 27 NOV 2025 to 25 DEC 2025

ARRIVAL ROUTE DESCRIPTION

APA: From DUNNN on track 319° to cross IMAGN at 16000, then on track 278° to cross BYEBI at 14000 and at 250K.

LANDING APA RUNWAY 17L: From BYEBI on track 278° to cross XBGIN between 13000 and 14000 and at 240K, then on track 279° to cross XLENT at or above 12000, then on track 288° to cross XPATH at 10500, then on track 327° to cross XWILL at 10000, then on track 323° to cross XHOME at 10000, then on track 350° to cross NSYNC at 10000 and at 210K, then on track 350°. Expect RADAR vectors to final approach course.

LANDING APA RUNWAY 35R: From BYEBI on track 278° to cross XBGIN between 13000 and 14000 and at 240K, then on track 279° to cross XLENT at or above 12000, then on track 288° to cross XPATH at 10500, then on track 350° to cross XBEEE at 9000 and at or below 240K. Expect ILS or RNAV RWY 35 approach.

LANDING BJC: From DUNNN on track 319° to cross IMAGN at 16000, then on track 278° to cross BYEBI at 14000 and at 250K, then on track 278° to cross XBGIN between 13000 and 14000 and at 240K, then on track 307° to cross GATME at 12000, then on track 307° to cross OLLVR at 12000 then on track 328° to cross HERLY at 11000, then on track 327° to cross CROWZ at 10000, then on track 327°. Expect RADAR vectors to final approach course.

LOST COMMUNICATIONS

LANDING CENTENNIAL:  
From over NSYNC- proceed to LOWRE and proceed on the RNAV (GPS) RWY 17L approach.  
From over XBEEE- execute the RNAV (GPS) RWY 35R approach.  
Non-GPS equipped aircraft- execute the ILS or LOC RWY 35R approach.

LANDING ROCKY MOUNTAIN METRO:  
From over NSYNC- proceed to NSPYR and proceed on the ILS or LOC RWY 30R approach.

SW-1, 27 NOV 2025 to 25 DEC 2025

SW-1, 27 NOV 2025 to 25 DEC 2025