

VORTAC HLV 114.2 Chan 89	APP CRS 154°	Rwy Idg TDZE Apt Elev N/A N/A 887
--	------------------------	---

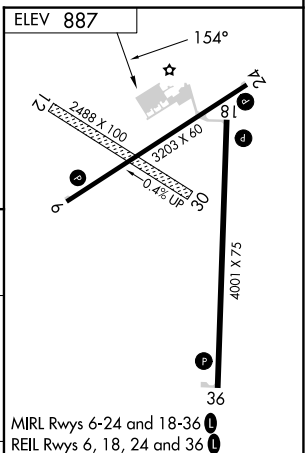
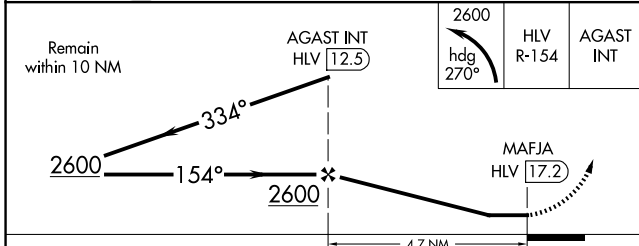
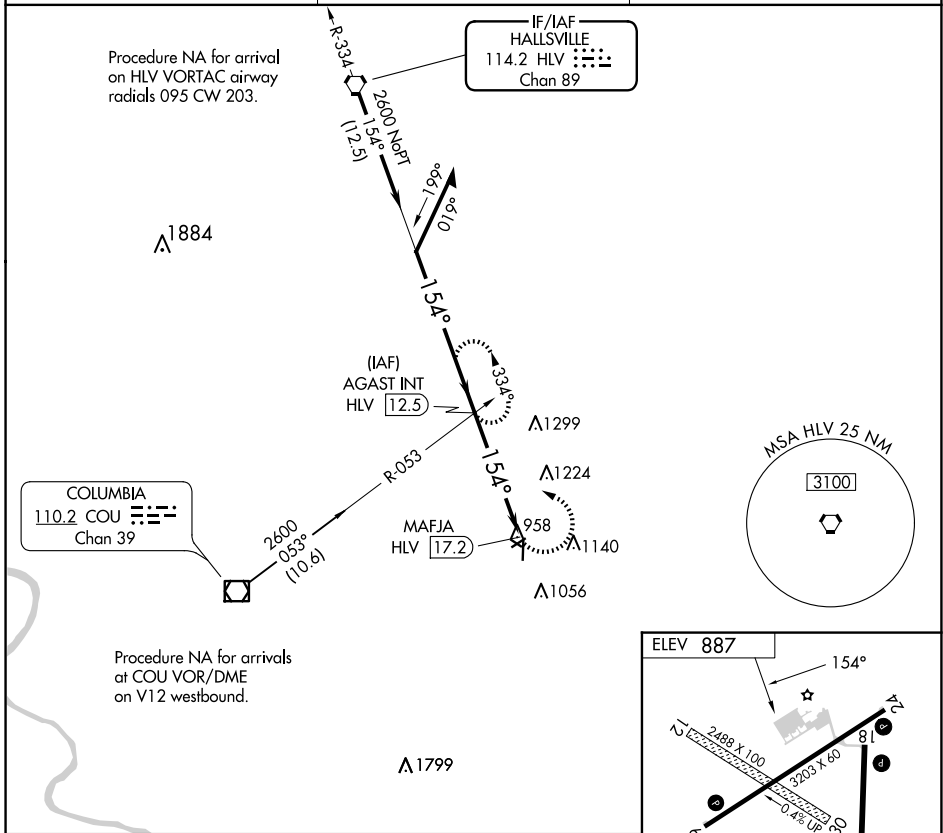
VOR-A

ELTON HENSLEY MEML (F'TT)

▽ Circling NA to Rwys 12 and 30. Circling Rwy 18, 24 NA at night.
△ NA Use Columbia altimeter setting; when not received use Jefferson City altimeter setting and increase all MDA 80 feet, and Circling Cat C visibility ¼ SM.

MISSED APPROACH: Climbing left turn to 2600 on heading 270° and HLV VORTAC R-154 to AGAST INT/12.5 DME and hold.

COU ASOS 128.45	MIZZU APP CON 124,375 353,925	UNICOM 122.7 (CTAF)
---------------------------	---	-------------------------------



CATEGORY	A	B	C	D	FAF to MAP 4.7 NM					
	1520-1	633 (700-1)	1560-2	NA	Knots	60	90	120	150	180
C CIRCLING					Min:Sec	4:42	3:08	2:21	1:53	1:34

VOR-A

NC-3, 27 NOV 2025 to 25 DEC 2025

NC-3, 27 NOV 2025 to 25 DEC 2025