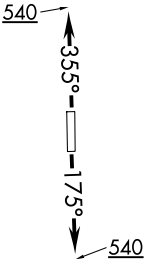
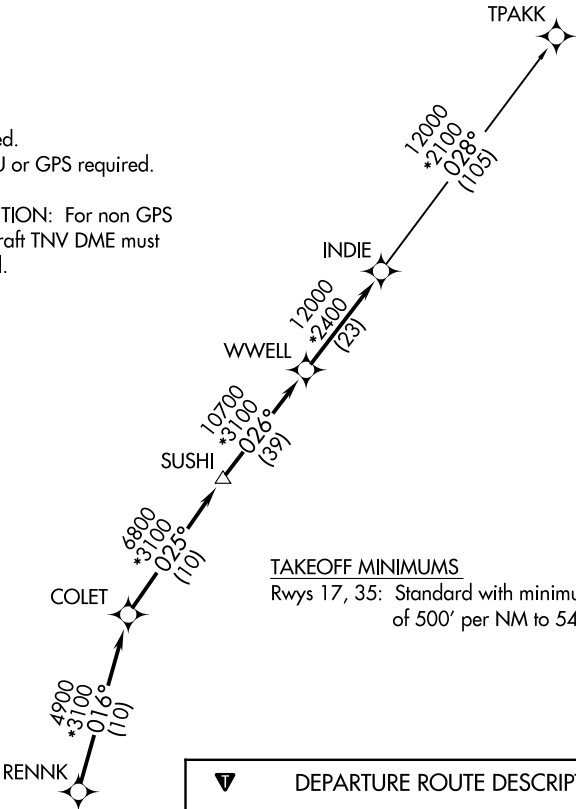


ASOS
119.925
CLNC DEL
125.2
CTAF
123.0
HOUSTON DEP CON
134.45 284.0

TOP ALTITUDE:
ASSIGNED BY ATC

NOTE: RADAR required.
NOTE: DME/DME/IRU or GPS required.
NOTE: RNAV 1.
NOTE: TPAKK TRANSITION: For non GPS
equipped aircraft TNV DME must
be operational.



DEPARTURE ROUTE DESCRIPTION

TAKEOFF RUNWAY 17: Climb on heading 175° to 540 for RADAR vectors to RENNK, thence
TAKEOFF RUNWAY 35: Climb on heading 355° to 540 for RADAR vectors to RENNK, thence
. . . . on track 016° to COLET, then on track 025° to SUSHI, then on track 026° to WWELL, then on track 026° to INDIE, then on (transition).
Maintain ATC assigned altitude. Expect filed altitude 10 minutes after departure.

TPAKK TRANSITION (INDIE8.TPAKK)

NOTE: Chart not to scale.

SC-5, 27 NOV 2025 to 25 DEC 2025

SC-5, 27 NOV 2025 to 25 DEC 2025