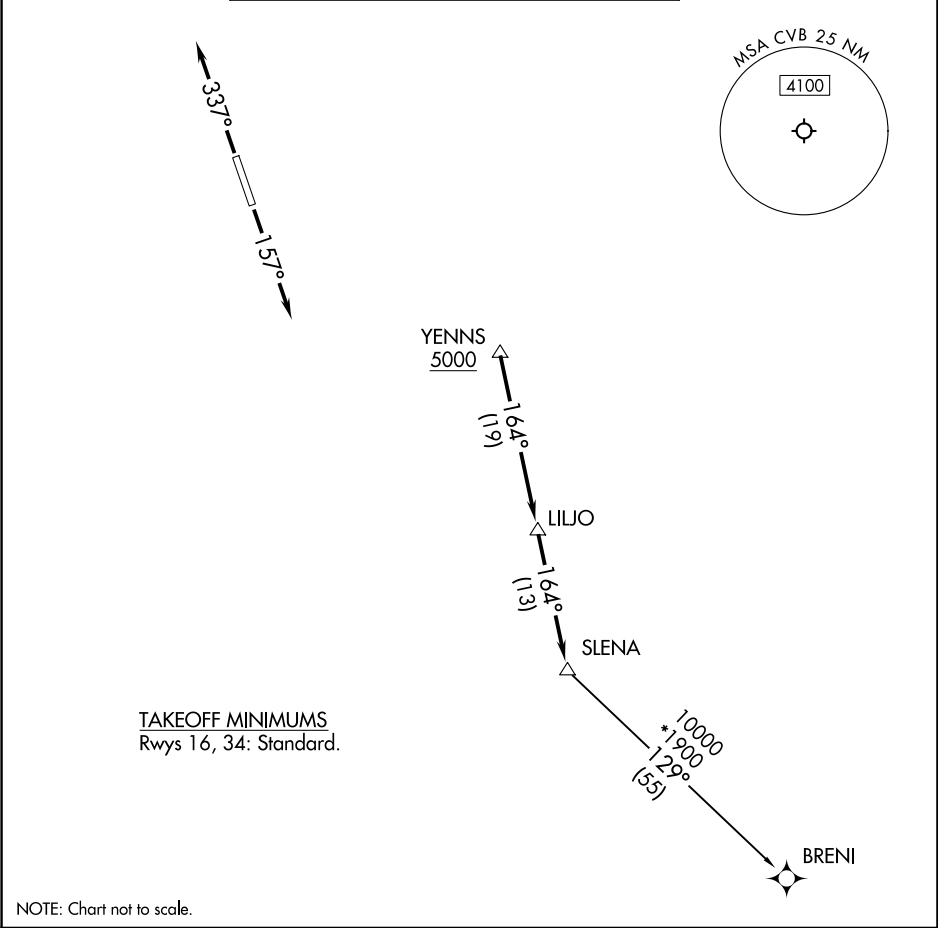


SAN ANTONIO DEP CON 118.05 353.5	RNAV 1 - DME/DME/IRU or GPS.	TOP ALTITUDE: ASSIGNED BY ATC
	RADAR required for non-GPS equipped aircraft. RADAR required.	



<div><div>▼</div><div>DEPARTURE ROUTE DESCRIPTION</div><div>TAKEOFF RUNWAY 16: Climb on heading 157° or as assigned by ATC, for vectors to YENNS. Thence. . .</div><div>TAKEOFF RUNWAY 34: Climb on heading 337° or as assigned by ATC, for vectors to YENNS. Thence. . .</div><div>. . .on track 164° to LILJO, then on track 164° to SLENA, then on transition. Maintain ATC assigned altitude. Expect filed altitude 10 minutes after departure.</div><div>BRENI TRANSITION (SLENA2.BRENI)</div></div>
---