

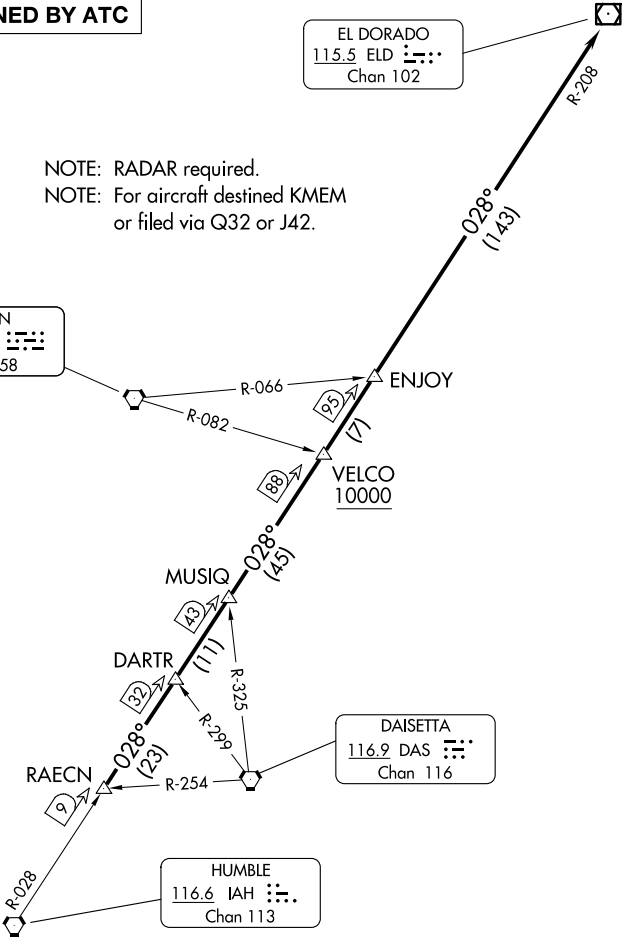
AWOS-3  
123.625  
CLNC DEL  
120.8  
CTAF  
123.0  
HOUSTON DEP CON  
123.8 257.7

TOP ALTITUDE:  
ASSIGNED BY ATC

EL DORADO  
115.5 ELD  
Chan 102

NOTE: RADAR required.  
NOTE: For aircraft destined KMEM  
or filed via Q32 or J42.

LUFKIN  
112.1 LFK  
Chan 58



TAKEOFF MINIMUMS  
Rwys 9, 27: Standard.

NOTE: Chart not to scale.

(CONTINUED ON FOLLOWING PAGE)



DEPARTURE ROUTE DESCRIPTION

TAKEOFF RUNWAY 9: Climb on heading 089° to 2000 before turning. When entering controlled airspace, climb on assigned heading for RADAR vectors to RAECN INT. Maintain ATC assigned altitude. Expect filed altitude 10 minutes after departure, thence. . . .

TAKEOFF RUNWAY 27: Climb on heading 269° to 2200 before turning. When entering controlled airspace, climb on assigned heading for RADAR vectors to RAECN INT. Maintain ATC assigned altitude. Expect filed altitude 10 minutes after departure, thence. . . .

. . . .on IAH R-028 and the ELD R-208 to ELD VOR/DME, cross VELCO INT at or above 10000.

SC-5, 27 NOV 2025 to 25 DEC 2025

SC-5, 27 NOV 2025 to 25 DEC 2025