

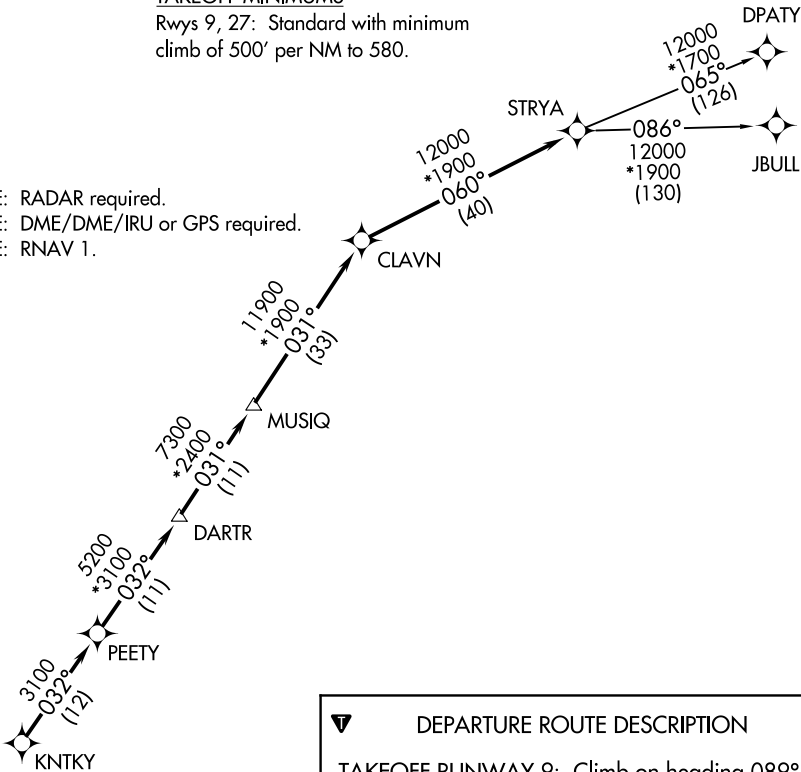
AWOS-3
123.625
CTAF
123.0
CLNC DEL
120.8
HOUSTON DEP CON
123.8 257.7

TOP ALTITUDE: ASSIGNED BY ATC

TAKEOFF MINIMUMS

Rwys 9, 27: Standard with minimum
climb of 500' per NM to 580.

- NOTE: RADAR required.
NOTE: DME/DME/IRU or GPS required.
NOTE: RNAV 1.



DEPARTURE ROUTE DESCRIPTION

TAKEOFF RUNWAY 9: Climb on heading 089°
to 2000 for RADAR vectors to KNTKY, thence. . .
TAKEOFF RUNWAY 27: Climb on heading 269°
to 2200 for RADAR vectors to KNTKY, thence. . .

. . . on track 032° to PEETY, then on track 032°
to DARTR, then on track 031° to MUSIQ, then on
track 031° to CLAVN, then on track 060° to
STRYA, then on (transition). Maintain ATC
assigned altitude. Expect filed altitude 10 minutes
after departure.

DPATY TRANSITION (STRYA8.DPATY)
JBULL TRANSITION (STRYA8.JBULL)

NOTE: Chart not to scale.