

## ELOEL THREE DEPARTURE (RNAV)

LAKEWAY AIRPARK (3R9)

LAKEWAY, TEXAS

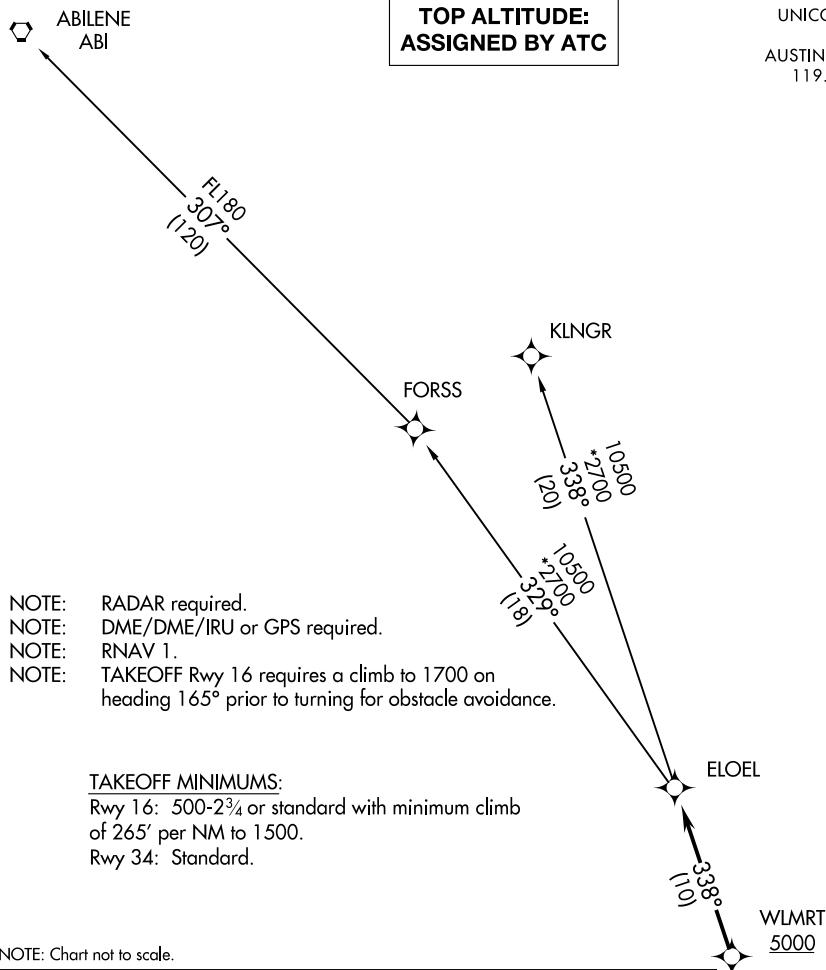
UNCOM (CTAF)

123.0

AUSTIN DEP CON

119.0 370.85

**TOP ALTITUDE:  
ASSIGNED BY ATC**



## DEPARTURE ROUTE DESCRIPTION

**TAKEOFF RUNWAY 16:** Climb on heading 165° to 1700, then as assigned by ATC for vectors to cross WLMRT at or above 5000, thence....

**TAKEOFF RUNWAY 34:** Climb on heading 345° or as assigned by ATC for vectors to cross WLMRT at or above 5000, thence....

. . . on track 338° to ELOEL, then on transition. Maintain altitude assigned by ATC. Expect filed altitude 10 minutes after departure.

### ABILENE TRANSITION (ELOEL3.ABI)

FORSS TRANSITION (ELOEL3.FORSS)

KLNGR TRANSITION (ELOEL3,KLNGR)

ELOEL THREE DEPARTURE (RNAV)

(ELOEL3.ELOEL) 22APR21

LAKEWAY, TEXAS

LAKEWAY AIRPARK (3R9)

SC-3, 27 NOV 2025 to 25 DEC 2025