

MRSHH TWO DEPARTURE (RNAV)

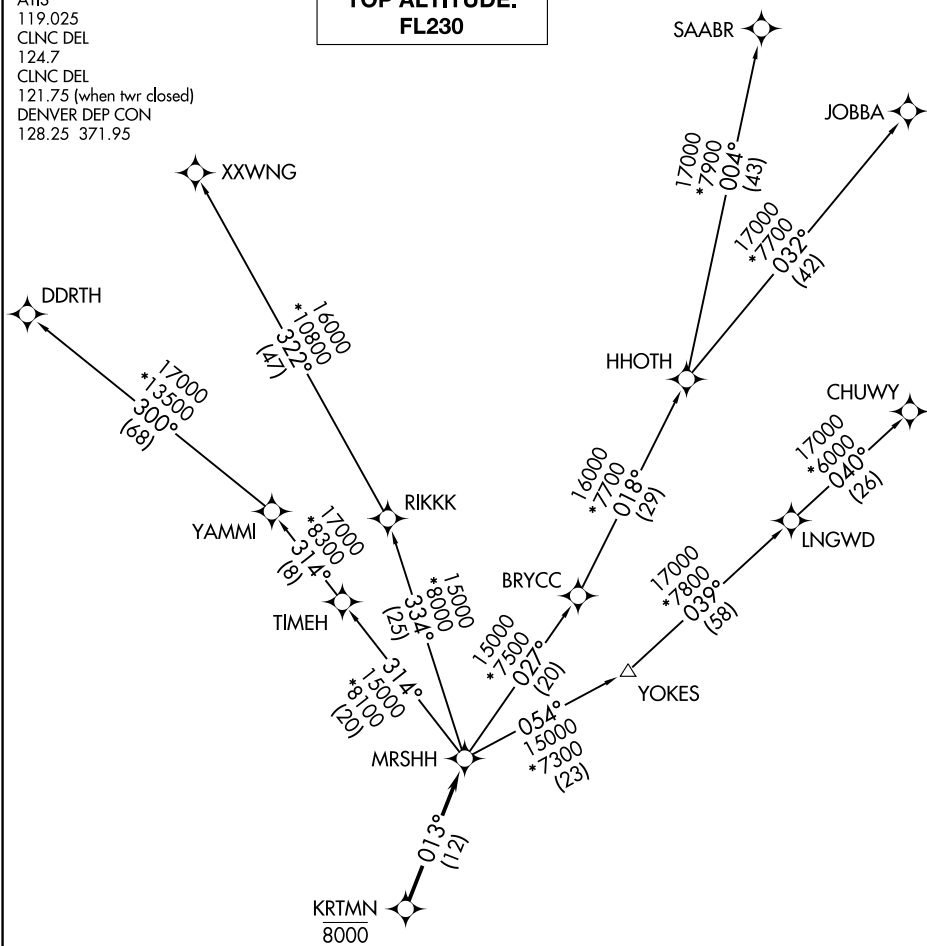
COLORADO AIR AND SPACE PORT (CFO)

AL-6851 (FAA)

DENVER, COLORADO

ATIS
 119.025
 CLNC DEL
 124.7
 CLNC DEL
 121.75 (when twr closed)
 DENVER DEP CON
 128.25 371.95

TOP ALTITUDE:
FL230



TAKEOFF MINIMUMS

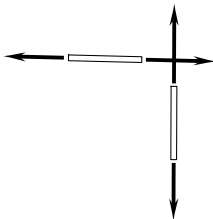
Rwys 8, 17, 26, 35: Standard.

NOTE: DME/DME/IRU or GPS required.

NOTE: RNAV 1.

NOTE: Turbojets only.

NOTE: RADAR required.



NOTE: Chart not to scale.

(NARRATIVE ON FOLLOWING PAGE)

MRSHH TWO DEPARTURE (RNAV)

(MRSHH2.MRSHH) 31DEC20

DENVER, COLORADO

COLORADO AIR AND SPACE PORT (CFO)

SW-1, 27 NOV 2025 to 25 DEC 2025



DEPARTURE ROUTE DESCRIPTION

TAKEOFF RUNWAY 8: Climb on a heading between 312° CW 228° as assigned by ATC. Thence. . . .

TAKEOFF RUNWAY 17: Climb on a heading between 352° CW 229° as assigned by ATC. Thence. . . .

TAKEOFF RUNWAY 26: Climb on a heading between 315° CW 083° as assigned by ATC. Thence. . . .

TAKEOFF RUNWAY 35: Climb on a heading between 313° CW 172° as assigned by ATC. Thence. . . .

. . . .expect RADAR vectors to cross KRTMN at 8000 then on track 013° to MRSHH, then on (transition) maintain FL230 or filed lower altitude. Expect higher filed altitude ten minutes after departure.

CHUWY TRANSITION (MRSHH2.CHUWY)

DDRTH TRANSITION (MRSHH2.DDRTH)

JOBBA TRANSITION (MRSHH2.JOBBA)

SAABR TRANSITION (MRSHH2.SAABR)

XXWNG TRANSITION (MRSHH2.XXWNG)

SW-1, 27 NOV 2025 to 25 DEC 2025

SW-1, 27 NOV 2025 to 25 DEC 2025