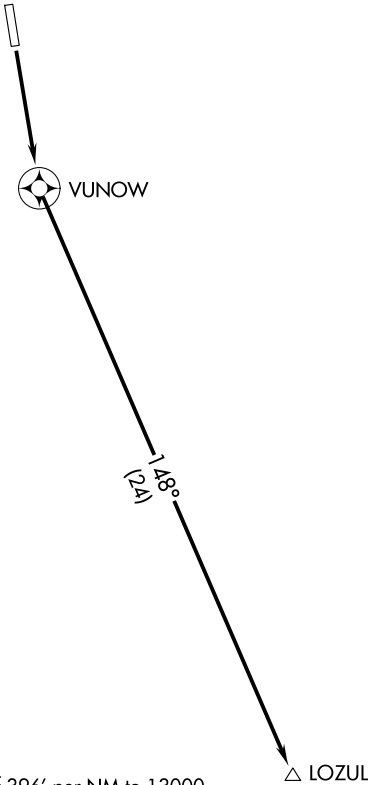


ASOS  
118.375  
DENVER CENTER  
119.85 363.15  
UNICOM  
122.8 (CTAF)



- NOTE: GPS required.
- NOTE: RNAV 1.
- NOTE: RADAR required.

TAKEOFF MINIMUMS  
Rwy 16: Standard with minimum climb of 396’ per NM to 13000.  
Rwy 34: NA, ATC.

TAKEOFF OBSTACLE NOTES  
Rwy 16: Poles, signs beginning 9’ from DER, 17’ left of centerline, up to 2’ AGL/9926’ MSL.  
Pole 10’ from DER, 17’ right of centerline, 2’ AGL/9926’ MSL.  
Trees beginning 180’ from DER, 516’ left of centerline, up to 9948’ MSL.  
Transmission line, poles beginning 499’ from DER, 632’ left of centerline, up to 101’ AGL/9989’ MSL.

NOTE: Chart not to scale.

DEPARTURE ROUTE DESCRIPTION

TAKEOFF RUNWAY 16: Climb direct VUNOW, then on track 148° to LOZUL, then on assigned route, maintain 16000.

SW-1, 27 NOV 2025 to 25 DEC 2025

SW-1, 27 NOV 2025 to 25 DEC 2025