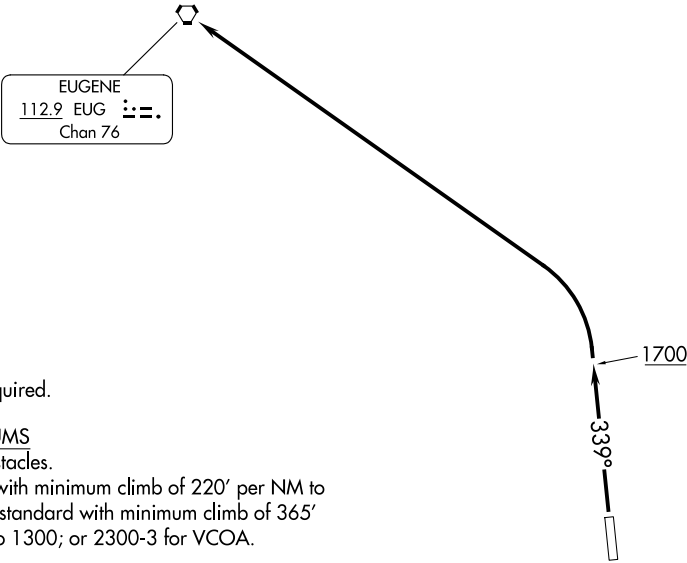


AWOS-3  
119.275  
CASCADE APP CON ★  
119.6  
CTAF  
122.7



NOTE: RADAR required.

TAKEOFF MINIMUMS

Rwy 16: NA - Obstacles.  
Rwy 34: 600-2½ with minimum climb of 220' per NM to 1700, or standard with minimum climb of 365' per NM to 1300; or 2300-3 for VCOA.

TAKEOFF OBSTACLE NOTES

Rwy 34: Vegetation 79' from DER, 268' right of centerline, 548' MSL.  
Fence 197' from DER, 278' right of centerline, 8' AGL/550' MSL.  
Tree 269' from DER, 287' right of centerline, 562' MSL.  
Traverse way beginning 438' from DER, 593' left of centerline, up to 557' MSL.  
Tree, transmission line beginning 879' from DER, 434' left of centerline, up to 573' MSL.  
Pole 1061' from DER, 374' right of centerline, up to 586' MSL.  
Pole 1122' from DER, 172' left of centerline, 36' AGL/580' MSL.  
Pole, traverse way beginning 1134' from DER, 334' left of centerline, up to 61' AGL/605' MSL.  
Pole, tree beginning 1214' from DER, 322' left of centerline, up to 616' MSL.  
Trees beginning 2367' from DER, 960' right of centerline, up to 629' MSL.  
Trees beginning 2448' from DER, 473' left of centerline, up to 643' MSL.  
Trees 3232' from DER, 1009' left of centerline, 657' MSL.  
Trees beginning 1.7 NM from DER, 2451' right of centerline, up to 1000' MSL.  
Trees beginning 1.8 NM from DER, 2877' right of centerline, up to 1040' MSL.  
Trees beginning 1.9 NM from DER, 1338' right of centerline, up to 98' AGL/1047' MSL.

NOTE: Chart not to scale.

DEPARTURE ROUTE DESCRIPTION

TAKEOFF RUNWAY 34: Climb heading 339° to 1700, then climbing left turn to 4000 direct EUG VORTAC.  
VCOA RUNWAY 34: Obtain ATC approval for VCOA when requesting IFR clearance. Cross Hobby Fld at or above 2700 before preceeding on course.