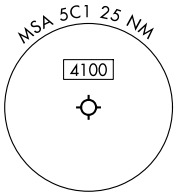
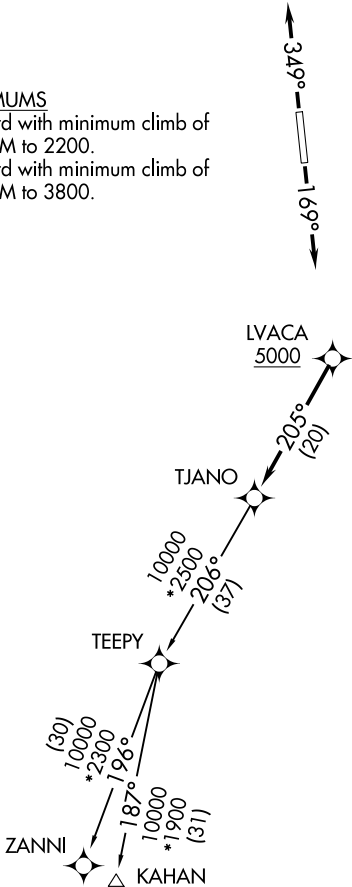


SAN ANTONIO DEP CON 125.1 307.0	RNAV 1 - DME/DME IRU or GPS. RADAR required for non-GPS equipped aircraft. RADAR required.	TOP ALTITUDE: ASSIGNED BY ATC
------------------------------------	--	----------------------------------

TAKEOFF MINIMUMS

Rwy 17: Standard with minimum climb of 210' /NM to 2200.
Rwy 35: Standard with minimum climb of 250' /NM to 3800.



NOTE: Chart not to scale.

<div>▼</div> <div>DEPARTURE ROUTE DESCRIPTION</div> <div>TAKEOFF RUNWAY 17: Climb on heading 169° or as assigned by ATC, for vectors to LVACA, thence. . . TAKEOFF RUNWAY 35: Climb on heading 349° or as assigned by ATC, for vectors to LVACA, thence.on track 205° to TJANO, then on transition. Maintain ATC assigned altitude. Expect filed altitude 10 minutes after departure. KAHAN TRANSITION (TJANO2.KAHAN) ZANNI TRANSITION (TJANO2.ZANNI)</div>
