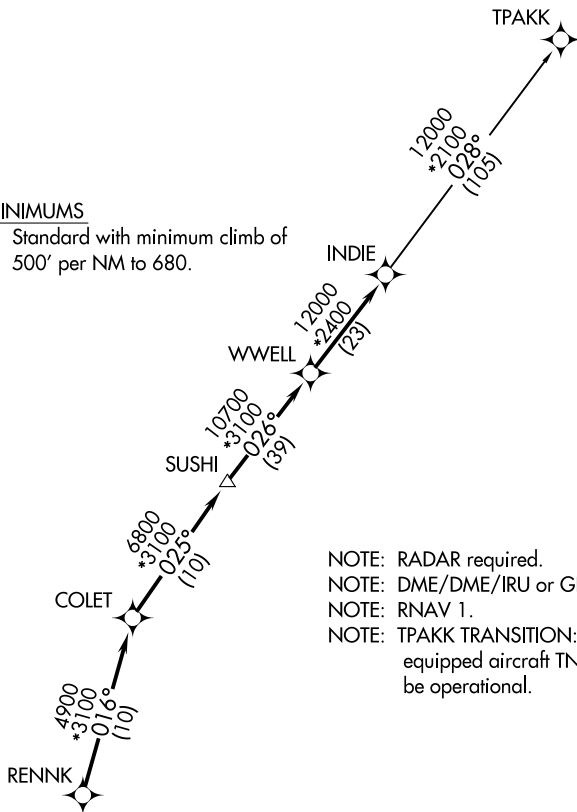


HOUSTON EXEC (TME)
HOUSTON, TEXAS

HOUSTON, TEXAS

**TOP ALTITUDE:
ASSIGNED BY ATC**

Rwy 18, 36: Standard with minimum climb of 500' per NM to 680.



NOTE: RADAR required.
NOTE: DME/DME/IRU or GPS required.
NOTE: RNAV 1.
NOTE: TPAKK TRANSITION: For non GPS equipped aircraft TNV DME must be operational.

T

TAKEOFF RUNWAY 18: Climb on heading 175° to 680 for RADAR vectors to RENNK, thence . . .
TAKEOFF RUNWAY 36: Climb on heading 355° to 680 for RADAR vectors to RENNK, thence . . .

... on track 016° to COLET, then on track 025° to SUSHI, then on track 026° to WWELL, then on track 026° to INDIE, then on (transition). Maintain ATC assigned altitude. Expect filed altitude 10 minutes after departure.

TPAKK TRANSITION (INDIE8.TPAKK)

NOTE: Chart not to scale.

Diagram illustrating the vertical dimensions of the beam:

- Total height: 680
- Height of the rectangular hole: 175
- Height of the remaining section above the hole: 355

HOUSTON, TEXAS
HOUSTON EXEC (TME)

(INDIE8.INDIE) 07OCT21