

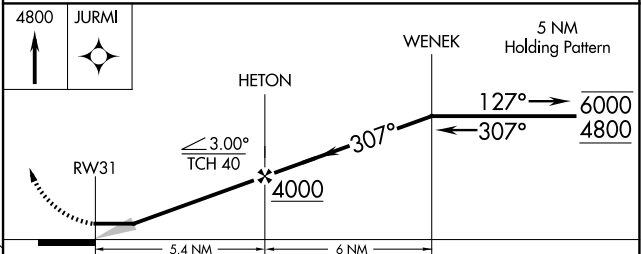
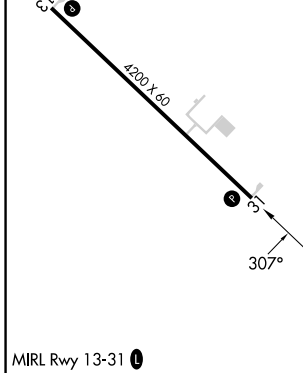
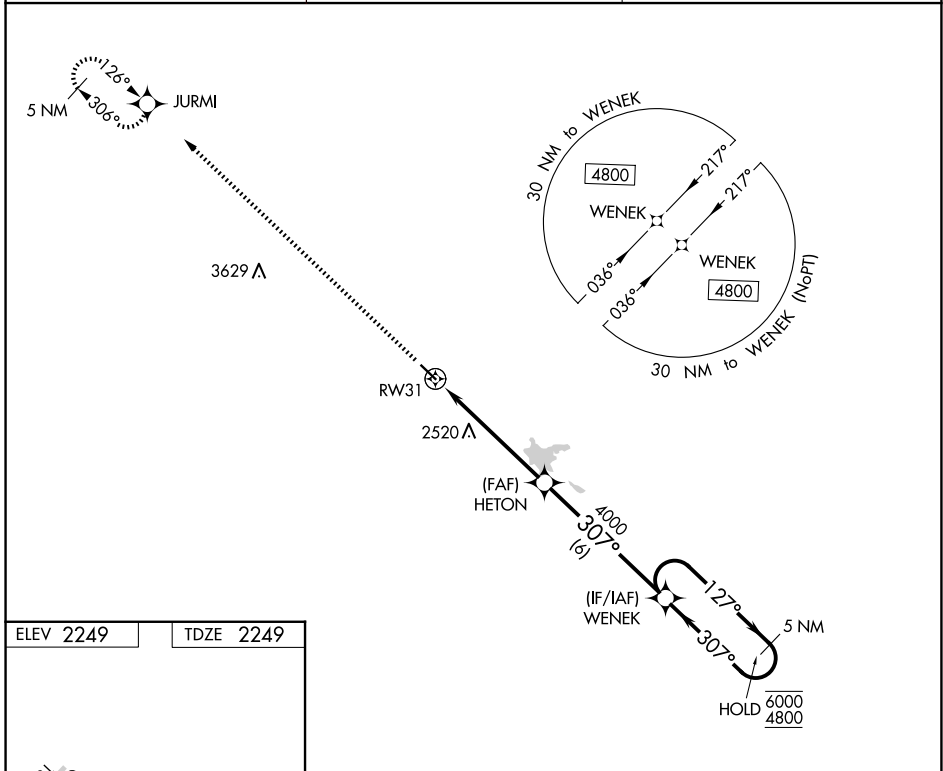
| | | |
|-------------|----------|-------------|
| APP CRS | Rwy Ldg | 4200 |
| 307° | TDZE | 2249 |
| | Apt Elev | 2249 |

RNAV (GPS) RWY 31

DUNN COUNTY WEYDAHL FLD (9Y1)

| | |
|---|---|
| RNP APCH. | MISSED APPROACH: Climb to 4800 direct JURMI and hold. |
| <p>▼ Use Watford City altimeter setting, when not received, use Dickinson altimeter setting: increase all MDA's 40 feet and visibility Cat B ¼ SM; increase Circling visibility Cat C ¼ SM.</p> <p>▲ NA</p> | |

| | | |
|----------------------------|---|------------------------|
| AWOS-3PT 118.525 | MINNEAPOLIS CENTER 124.25 236.825 | CTAF 122.9 0 |
|----------------------------|---|------------------------|



| CATEGORY | A | B | C | D |
|----------|--------|-------------|-----------------------|----|
| LNAV MDA | 2960-1 | 711 (800-1) | 2960-2 711 (800-2) | NA |
| CIRCLING | 2960-1 | 711 (800-1) | 2960-2 711 (800-2) | NA |