

ATLANTA APP CON  
128.525 379.9  
D-ATIS ARR  
119.65

RNAV 1 - DME/DME/IRU or GPS.

RADAR required.

NOTE: Jet aircraft only.

NOTE: Landing west: Select Rwy 26R, select HAINZ approach transition; Landing east: Select Rwy 8L.

NOTE: Landing Rwy 27L: Select ROMMM approach transition.

NOTE: Landing Rwy 26L: Select BOYKN approach transition.

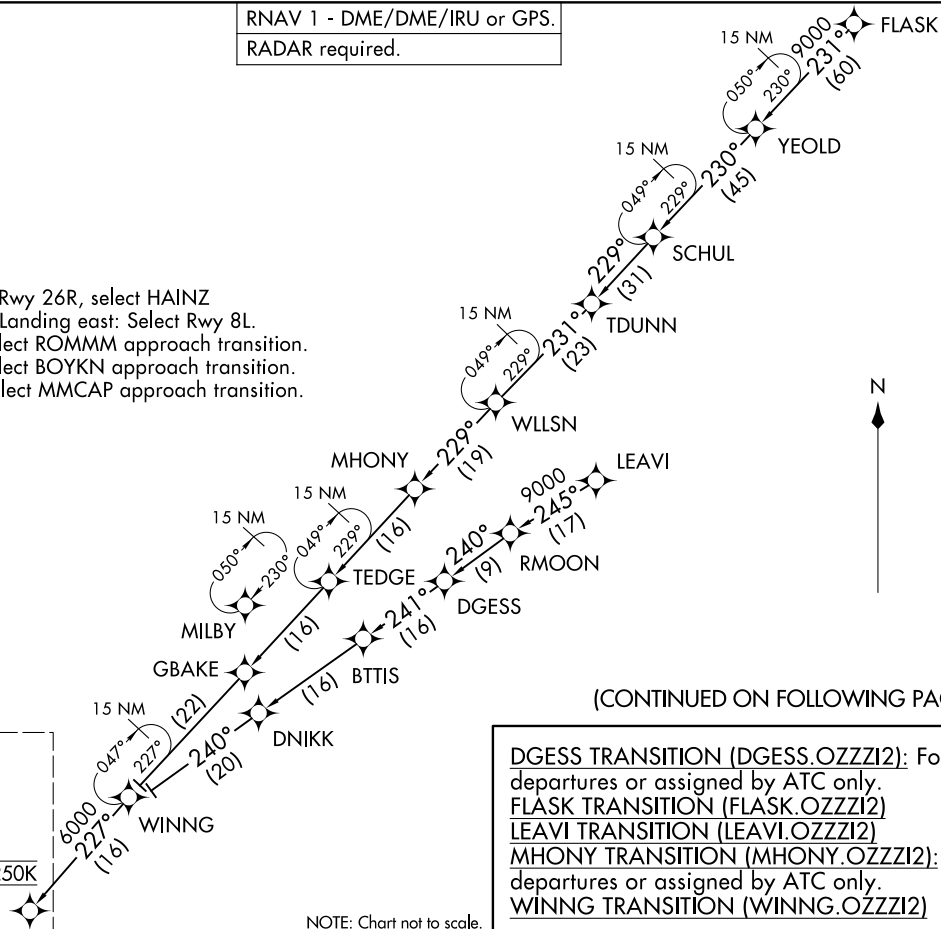
NOTE: Landing Rwy 27R: Select MMCAP approach transition.

0ZZI TWO ARRIVAL (RNAV) 27 NOV 25

Transition Routes

HARTSFIELD/JACKSON ATLANTA INTL (ATL)

ATLANTA, GEORGIA



(CONTINUED ON FOLLOWING PAGE)

See following page  
for arrival route.

OZZI

Landing East: Expect 14000

Landing West: Expect 12000 and 250K

NOTE: Chart not to scale.

DGESS TRANSITION (DGESS.OZZI2): For GSP  
departures or assigned by ATC only.  
FLASK TRANSITION (FLASK.OZZI2)  
LEAVI TRANSITION (LEAVI.OZZI2)  
MHONY TRANSITION (MHONY.OZZI2): For AVL  
departures or assigned by ATC only.  
WINNG TRANSITION (WINNG.OZZI2)

0ZZI TWO ARRIVAL (RNAV) 25331

AT-26 (FAA) HARTSFIELD/JACKSON ATLANTA INTL (ATL)  
Transition Routes

ATLANTA, GEORGIA

0ZZZ TWO ARRIVAL (RNAV)  
(0ZZZ, 0ZZZ12) 27 NOV 25

Arrival Routes

ATLANTA, GEORGIA  
HARTSFIELD/JACKSON ATLANTA INTL (ATL)

ATLANTA APP CON  
128.525 379.9  
D-ATIS ARR  
119.65

RNAV 1 - DME/DME/IRU or GPS.

RADAR required.

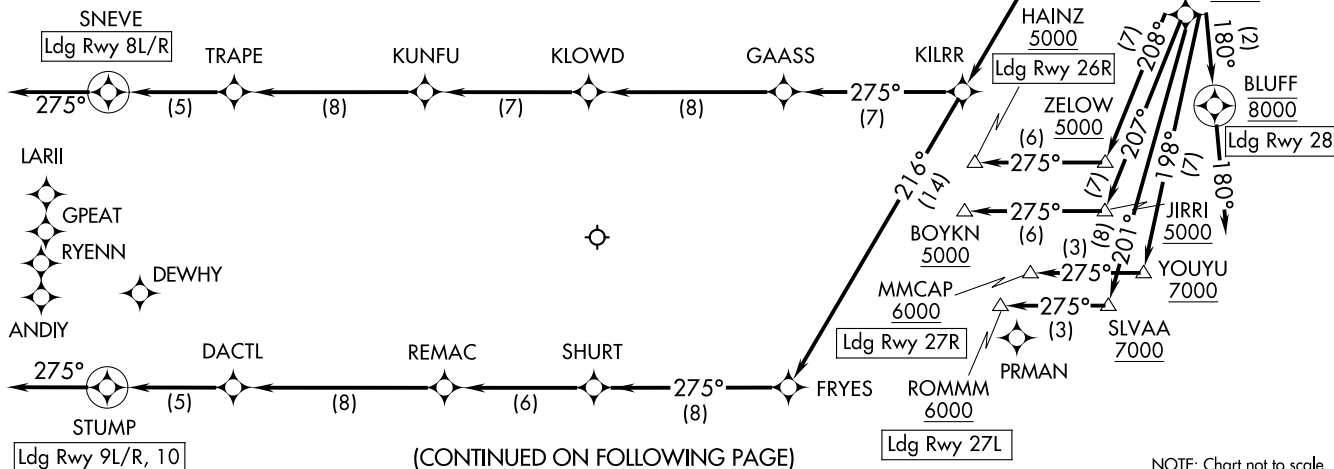
NOTE: Jet aircraft only.

NOTE: Landing west: Select Rwy 26R, select HAINZ approach transition; Landing east: Select Rwy 8L.

NOTE: Landing Rwy 27L: Select ROMMM approach transition.

NOTE: Landing Rwy 26L: Select BOYKN approach transition.

NOTE: Landing Rwy 27R: Select MMCAP approach transition.



(CONTINUED ON FOLLOWING PAGE)

NOTE: Chart not to scale.

0ZZZ TWO ARRIVAL (RNAV)  
(0ZZZ, 0ZZZ12) 25331

Arrival Routes

ATLANTA, GEORGIA  
HARTSFIELD/JACKSON ATLANTA INTL (ATL)

ARRIVAL ROUTE DESCRIPTION

From OZZI on track 227° to HAARY.

LANDING RUNWAYS 8L/R: From HAARY on track 216° to KILRR, then on track 275° to GAASS, then on track 275° to KLOWD, then on track 275° to KUNFU, then on track 275° to TRAPE, then on track 275° to SNEVE, then on track 275°. Expect RADAR vectors to final approach course.

LANDING RUNWAYS 9L/R, 10: From HAARY on track 216° to KILRR, then on track 216° to FRYES, then on track 275° to SHURT, then on track 275° to REMAC, then on track 275° to DACTL, then on track 275° to STUMP, then on track 275°. Expect RADAR vectors to final approach course.

LANDING RUNWAY 26L: From HAARY on track 183° to cross CALLA at 9000, then on track 183° to cross POSEY at or above 8000, then on track 207° to cross JIRRI at or above 5000, then on track 275° to cross BOYKN at or above 5000. Expect ILS RWY 26L approach.

LANDING RUNWAY 26R: From HAARY on track 183° to cross CALLA at 9000, then on track 183° to cross POSEY at or above 8000, then on track 208° to cross ZELOW at or above 5000, then on track 275° to cross HAINZ at or above 5000. Expect ILS RWY 26R approach.

LANDING RUNWAY 27L: From HAARY on track 183° to cross CALLA at 9000, then on track 183° to cross POSEY at or above 8000, then on track 201° to cross SLVAA at or above 7000, then on track 275° to cross ROMMM at or above 6000. Expect ILS RWY 27L approach.

LANDING RUNWAY 27R: From HAARY on track 183° to cross CALLA at 9000, then on track 183° to cross POSEY at or above 8000, then on track 198° to cross YOUYU at or above 7000, then on track 275° to cross MMCAP at or above 6000. Expect ILS RWY 27R approach.

LANDING RUNWAY 28: From HAARY on track 183° to cross CALLA at 9000, then on track 183° to cross POSEY at or above 8000, then on track 180° to cross BLUFF at 8000, then on track 180°. Expect RADAR vectors to final approach course.

LOST COMMUNICATIONS:

LANDING EAST: ASSIGNED RUNWAY 8L OR RUNWAY NOT ASSIGNED: Cross OZZI at 14000; cross GAASS at 12000, cross KUNFU at or above 7000; cross SNEVE at 5000; after SNEVE turn left direct LARII and proceed on the ILS or RNAV RWY 8L approach.

LANDING EAST: ASSIGNED RUNWAY 8R: Cross OZZI at 14000; cross GAASS at 12000; cross KUNFU at or above 7000; cross SNEVE at 5000; after SNEVE turn left direct GPEAT and proceed on the ILS or RNAV RWY 8R approach.

LANDING EAST: ASSIGNED RUNWAY 9L: Cross OZZI at 14000; cross FRYES at 12000; cross REMAC at or above 7000; cross STUMP at 4000; after STUMP turn right direct RYENN and proceed on the ILS or RNAV RWY 9L approach.

LANDING EAST: ASSIGNED RUNWAY 9R: Cross OZZI at 14000; cross FRYES at 12000; cross REMAC at or above 7000; cross STUMP at 4000; after STUMP turn right direct ANDIY and proceed on the ILS or RNAV RWY 9R approach.

LANDING EAST: ASSIGNED RUNWAY 10: Cross OZZI at 14000; cross FRYES at 12000; cross REMAC at or above 7000; cross STUMP at 4000; after STUMP turn right direct DEWHY and proceed on the ILS or RNAV RWY 10 approach.

LANDING WEST: ASSIGNED RUNWAY 28: Cross OZZI at 14000; cross CALLA at 9000; cross POSEY at or above 8000; cross BLUFF at 8000; after BLUFF descend to 6000 and proceed direct PRMAN; proceed on the ILS or RNAV RWY 28 approach.