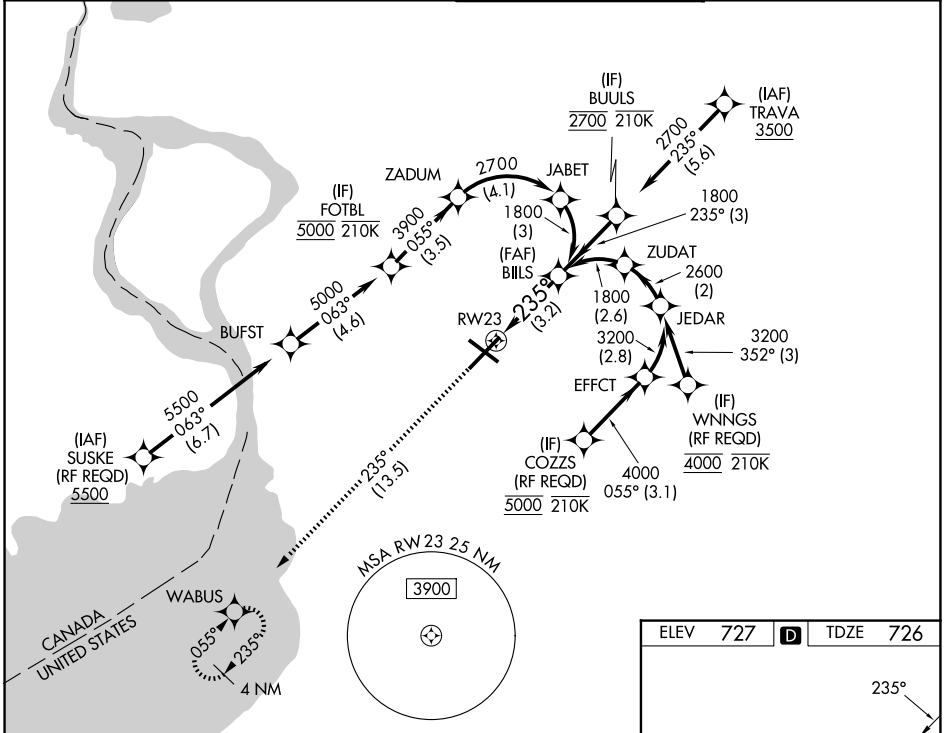


APP CRS <b>235°</b>	Rwy Ldg TDZE Apt Elev	<b>7569</b> <b>726</b> <b>727</b>
------------------------	-----------------------------	---

# RNAV (RNP) Z RWY 23

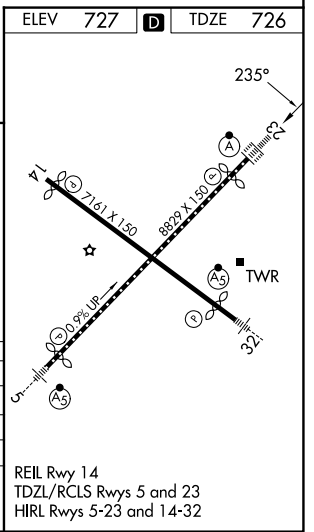
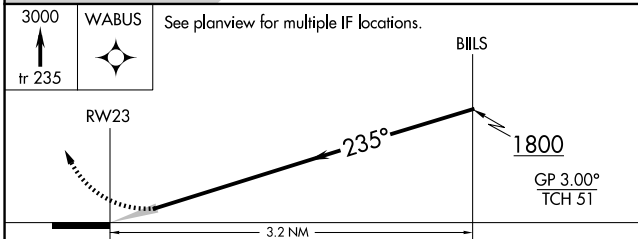
BUFFALO NIAGARA INTL (BUF)

RNP AR APCH.		ALSF-2	MISSED APPROACH: Climb to 3000 on the RNAV missed approach route to WABUS and hold.
<p>▼ For uncompensated Baro-VNAV systems, procedure NA below -18°C or above 54°C. For inop ALSF, increase RNP 0.10 all Cats visibility to 1½. For inop ALSF, increase RNP 0.20 all Cats visibility to 1½. For inop ALSF, increase RNP 0.30 all Cats visibility to 1½.</p>			
D-ATIS <b>135.35</b>	BUFFALO APP CON <b>126.15 263.125</b>	BUFFALO TOWER <b>120.5 257.8</b>	GND CON <b>133.2 257.8</b>



NE-2, 25 DEC 2025 to 22 JAN 2026

NE-2, 25 DEC 2025 to 22 JAN 2026



CATEGORY	A	B	C	D
RNP 0.10 DA		1114/45	388 (400-7%)	
RNP 0.20 DA		1170/55	444 (500-1)	
RNP 0.30 DA		1228-1¼	502 (600-1¼)	

**AUTHORIZATION REQUIRED**