

BAGGY THREE ARRIVAL (RNAV)
(BAGGY.BAGGY3) 27JAN22

BAGGY THREE ARRIVAL (RNAV)

CHARLESTON, SOUTH CAROLINA

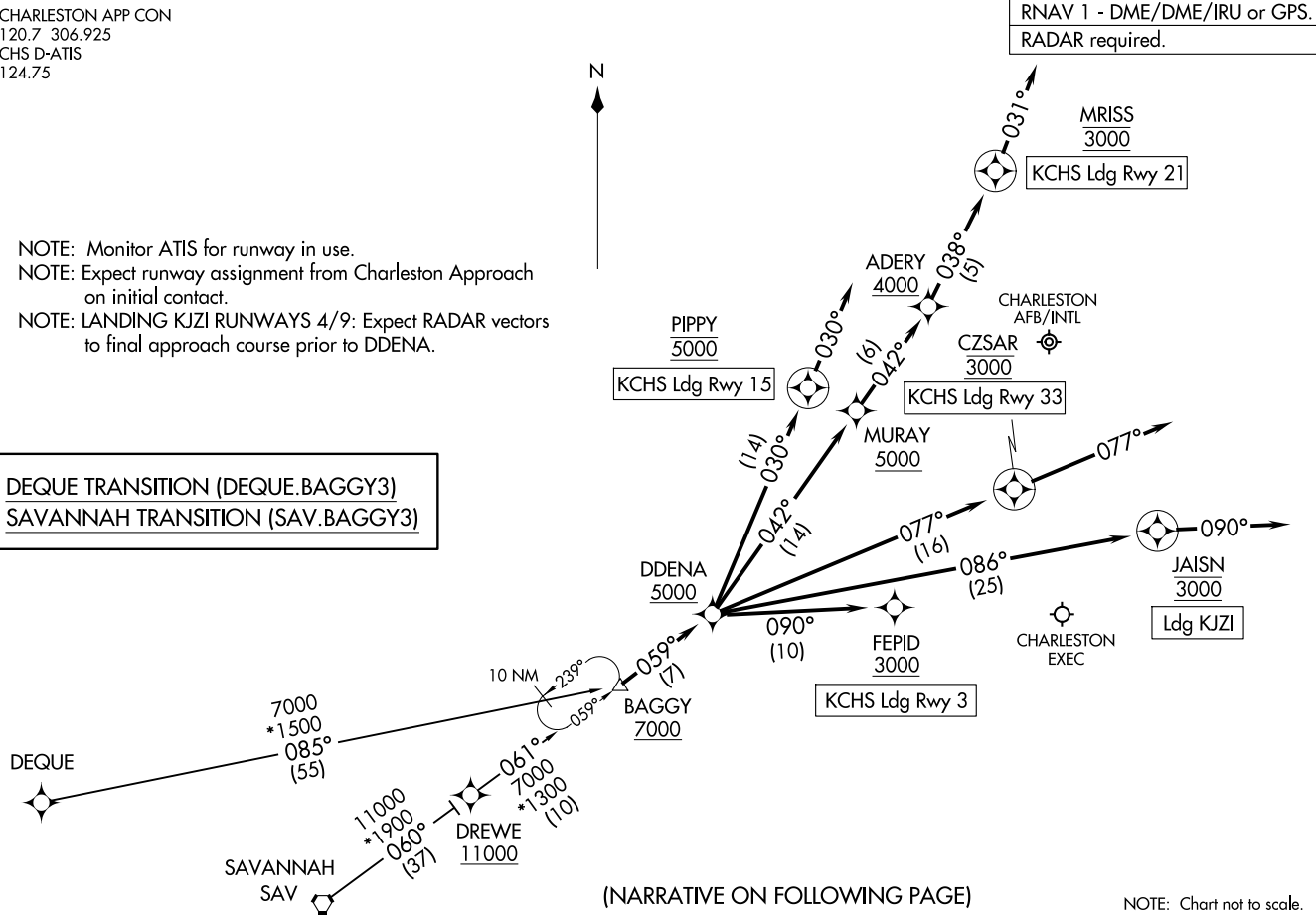
CHARLESTON APP CON
120.7 306.925
CHS D-ATIS
124.75

NOTE: Monitor ATIS for runway in use.

NOTE: Expect runway assignment from Charleston Approach on initial contact.

NOTE: LANDING KJZI RUNWAYS 4/9: Expect RADAR vectors to final approach course prior to DDENA.

DEQUE TRANSITION (DEQUE.BAGGY3)
SAVANNAH TRANSITION (SAV.BAGGY3)



(NARRATIVE ON FOLLOWING PAGE)

NOTE: Chart not to scale.

(BAGGY.BAGGY3) 23222

AL-76 (FAA)

CHARLESTON, SOUTH CAROLINA

ARRIVAL ROUTE DESCRIPTION

KCHS: From BAGGY on track 059° to cross DDENA at or above 5000.

LANDING KCHS RUNWAY 3: From DDENA on track 090° to cross FEPID at or above 3000. Expect RNAV (RNP) RWY 3 approach.
Non-RNP aircraft: Expect RADAR vectors to final approach course.

LANDING KCHS RUNWAY 15: From DDENA on track 030° to cross PIPPY at 5000, then on heading 030°. Expect RNAV (RNP) RWY 15 approach.
Non-RNP aircraft: Expect RADAR vectors to final approach course.

LANDING KCHS RUNWAY 21: From DDENA on track 042° to cross MURAY at or above 5000, then on track 042° to cross ADERY at or above 4000, then on track 038° to cross MARISS at 3000 then on heading 031°. Expect RNAV (RNP) RWY 21 approach. Non-RNP aircraft: Expect RADAR vectors to final approach course.

LANDING KCHS RUNWAY 33: From DDENA on track 077° to cross CZSAR at 3000, then on heading 077°. Expect RNAV (RNP) RWY 33 approach.
Non-RNP aircraft: Expect RADAR vectors to final approach course.

LANDING KJZI RUNWAYS 4, 9: From BAGGY on track 059° to cross DDENA at or above 5000, then on track 086° to cross JAISN at 3000, then on heading 090°. Expect RADAR vectors to final approach course prior to DDENA.

LANDING KJZI RUNWAY 27: From BAGGY on track 059° to cross DDENA at or above 5000, then on track 086° to cross JAISN at 3000, then on heading 090°. Expect RADAR vectors to final approach course after JAISN.