

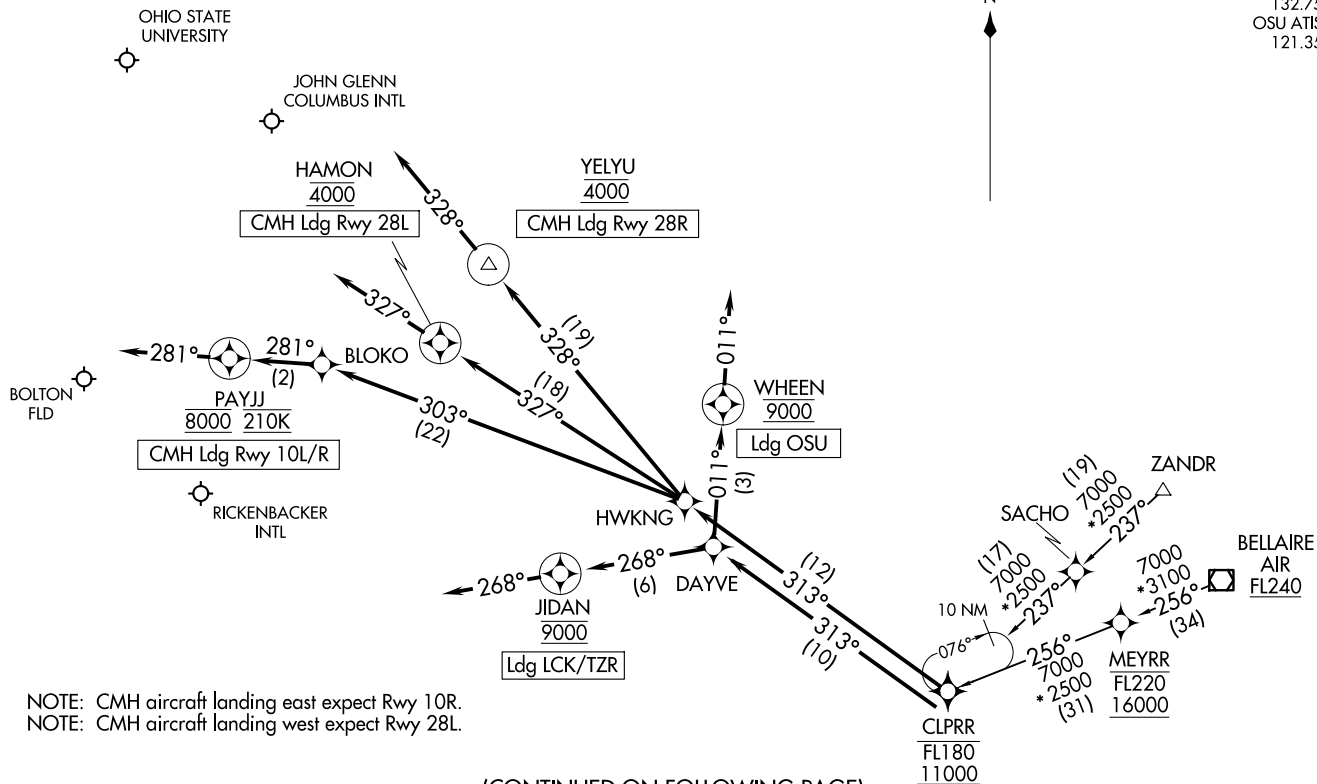
COLUMBUS, OHIO



EC-2, 25 DEC 2025 to 22 JAN 2026

CLPRR THREE ARRIVAL (RNAV)  
(CLPRR.CLPRR3) 26DEC24

COLUMBUS, OHIO



NOTE: Chart not to scale.

ARRIVAL ROUTE DESCRIPTION

BELLAIRE TRANSITION (AIR.CLPRR3)  
ZANDR TRANSITION (ZANDR.CLPRR3)

CMH: From CLPRR on track 313° to HWKNG.

LANDING CMH RUNWAY 10L/R: From HWKNG on track 303° to BLOKO, then on track 281° to cross PAYJJ at 8000 and at 210K, then on track 281°. Expect RADAR vectors to final approach course.

LANDING CMH RUNWAY 28L: From HWKNG on track 327° to cross HAMON at 4000, then on track 327°. Expect RADAR vectors for ILS Rwy 28L approach.

LANDING CMH RUNWAY 28R: From HWKNG on track 328° to cross YELYU at 4000, then on track 328°. Expect RADAR vectors for ILS Rwy 28R approach.

LANDING TZR/LCK: From CLPRR on track 313° to DAYVE, then on track 268° to cross JIDAN at 9000, then on track 268°. Expect RADAR vectors to final approach course.

LANDING OSU: From CLPRR on track 313° to DAYVE, then on track 011° to cross WHEEN at 9000, then on track 011°. Expect RADAR vectors to final approach course.