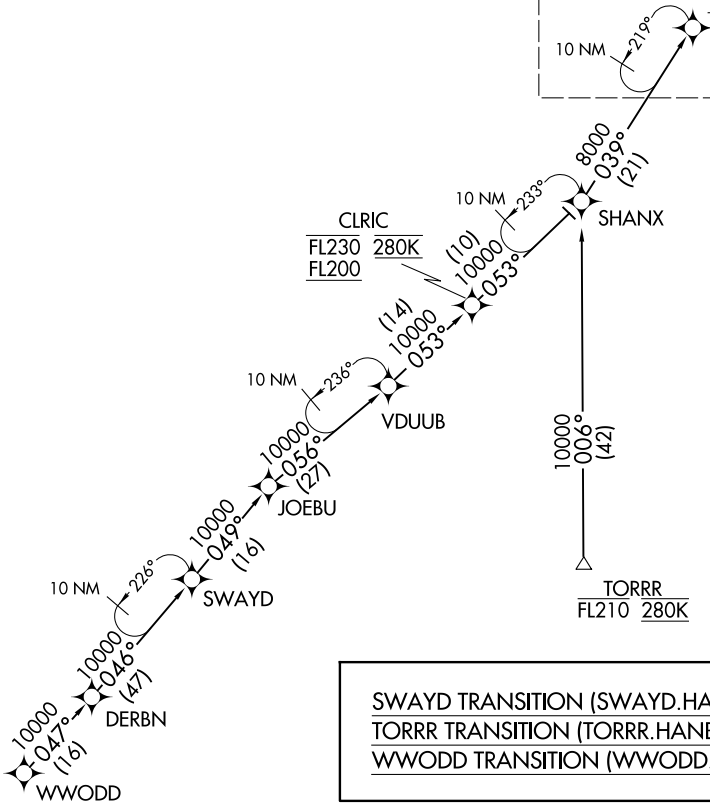


HANBL THREE ARRIVAL (RNAV) Transition Routes

D-ATIS  
133.675  
DETROIT APP CON  
124.975 284.0

See following page  
for arrival routes

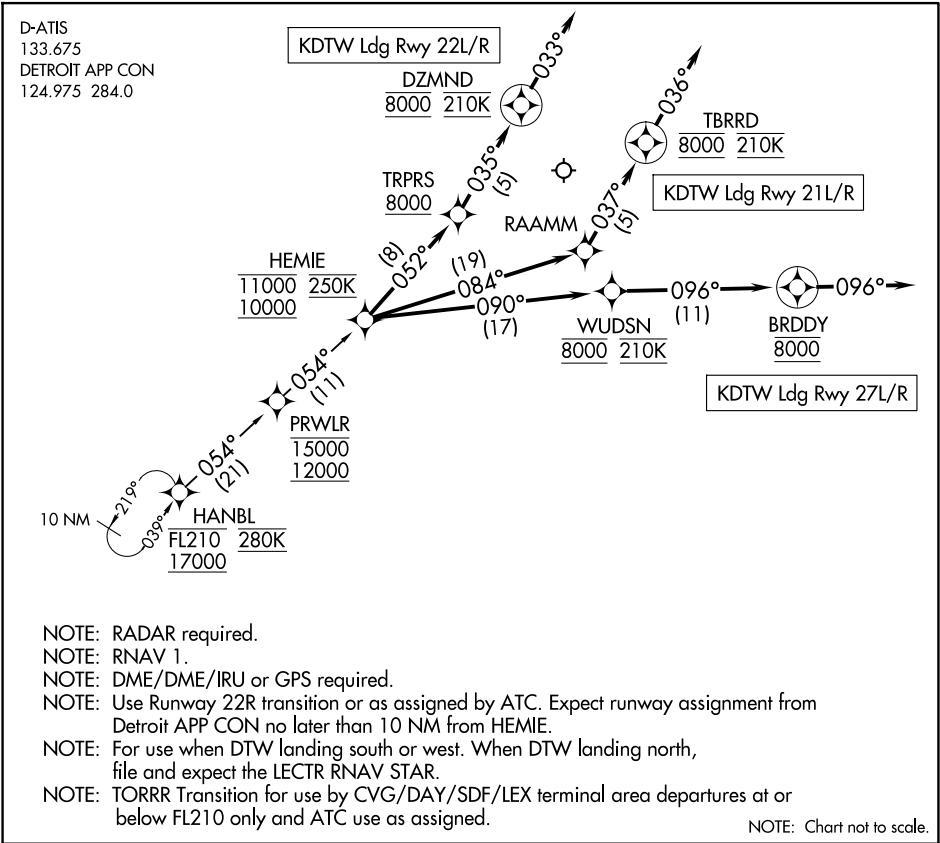
HANBL  
FL210 280K  
17000



- NOTE: RADAR required.  
NOTE: RNAV 1.  
NOTE: DME/DME/IRU or GPS required.  
NOTE: Use Runway 22R transition or as assigned by ATC. Expect runway assignment from Detroit APP CON no later than 10 NM from HEMIE.  
NOTE: For use when DTW landing south or west. When DTW landing north, file and expect the LECTR RNAV STAR.  
NOTE: TORRR Transition for use by CVG/DAY/SDF/LEX terminal area departures at or below FL210 only and ATC use as assigned.

(NARRATIVE ON FOLLOWING PAGE)  
(CONTINUED ON FOLLOWING PAGE)

NOTE: Chart not to scale.



ARRIVAL ROUTE DESCRIPTION
From HANBL on track 054° to cross PRWLRL between 12000 and 15000, then on track 054° to cross HEMIE between 10000 and 11000 and at 250K.
<u>LANDING RUNWAY 21L/R:</u> From HEMIE on track 084° to RAAMM, then on track 037° to cross TBRRD at 8000 and at 210K, then on track 036°. Expect RADAR vectors to final approach course.
<u>LANDING RUNWAY 22L/R:</u> From HEMIE on track 052° to cross TRPRS at or above 8000, then on track 035° to cross DZMND at 8000 and at 210K, then on track 033°. Expect RADAR vectors to final approach course.
<u>LANDING RUNWAY 27L/R:</u> From HEMIE on track 090° to cross WUDSN at 8000 and at 210K, then on track 096° to cross BRDDY at 8000, then on track 096°. Expect RADAR vectors to final approach course.