

| | | | |
|---|------------------------|-----------------------------|--|
| LOC/DME I-EJR 111.5 Chan 52 | APP CRS 216° | Rwy Ldg TDZE Apt Elev | 10001 632 645 |
|---|------------------------|-----------------------------|--|

ILS or LOC RWY 21L

DETROIT METRO WAYNE COUNTY (DTW)

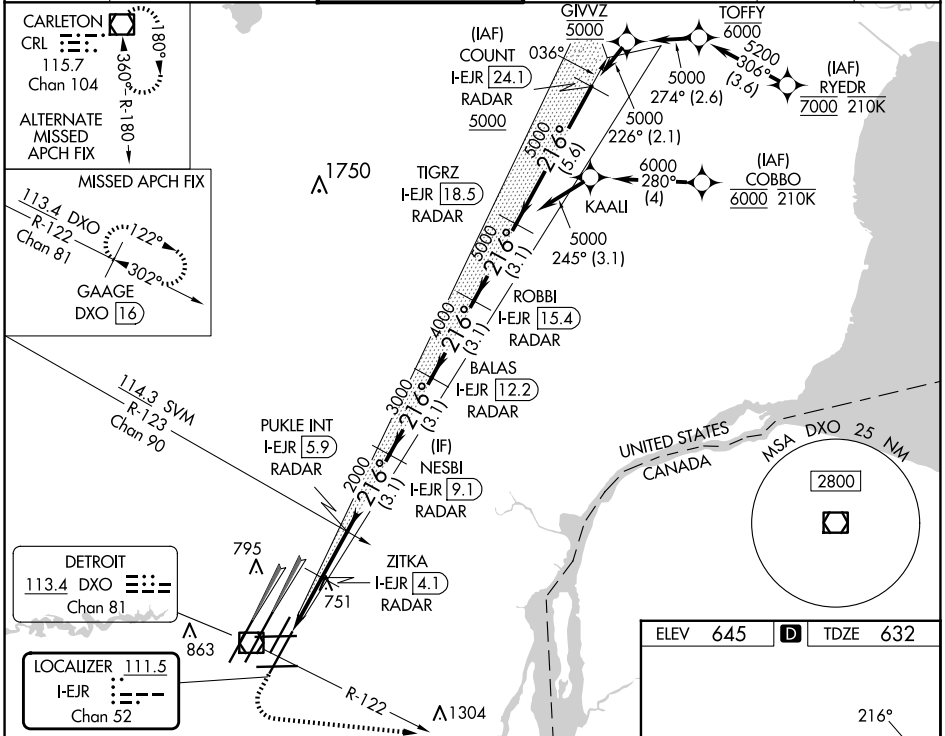
From RYEDR, COBBO: RNAV 1-DME/DME/IRU or GPS required. Aircraft not DME/DME/IRU or GPS equipped - RADAR required for procedure entry. DME or RADAR required.



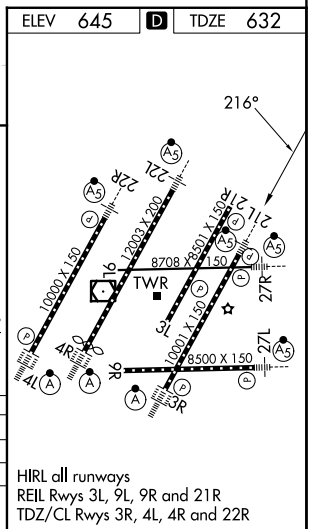
MISSED APPROACH: Climb to 1100 then climbing left turn to 4000 on DXO R-122 to GAAGE/DXO 16 DME and hold, continue climb-in-hold to 4000.

Simultaneous approach authorized.
**RVR 1800 authorized with use of FD or AP or HUD to DA.

| | | | | | |
|--------------------------|--|-------------------------------------|---|---------------------------|-------|
| D-ATIS 133.675 | DETROIT APP CON 125.15 284.0 | METRO TOWER 118.4 317.725 | GND CON 121.8 (NW) 119.45 (NE) 132.725 (SW) 119.25 (SE) | CLNC DEL 120.65 | CPDLC |
|--------------------------|--|-------------------------------------|---|---------------------------|-------|



| | | | | | | | | |
|--------------|---------|-----------------|---------------------|---|------------------|------------------|------------------|-------------|
| 1100 | 4000 | DXO R-122 | GAAGE DXO 16 | VGSI and ILS glidepath not coincident (VGSI Angle 3.00/TCH 80). | | | | |
| *LOC only | | ZITKA I-EJR 4.1 | PUKLE INT I-EJR 5.9 | NESBI I-EJR 9.1 | BALAS I-EJR 12.2 | ROBBI I-EJR 15.4 | TIGRZ I-EJR 18.5 | |
| I-EJR 1.8 | | I-EJR 2.8 | I-EJR 4.1 | I-EJR 5.9 | I-EJR 9.1 | I-EJR 12.2 | I-EJR 15.4 | |
| 1 NM | | 1.3 NM | 1.8 NM | 3.1 NM | 3.1 NM | 3.1 NM | 3.1 NM | |
| CATEGORY | A | B | C | D | | | | |
| S-ILS 21L ** | 832/24 | | | | | | | 200 (200-½) |
| S-LOC 21L | 1020/24 | 388 (400-½) | 1020/35 | 388 (400-½) | | | | |
| ☉ CIRCLING | 1180-1 | 535 (600-1) | 1180-1½ | 535 (600-1½) | 1240-2 | 595 (600-2) | | |



HIRL all runways
REIL Rwy's 3L, 9L, 9R and 21R
TDZ/CL Rwy's 3R, 4L, 4R and 22R