

LOC/DME I-DTW <b>110.7</b>	APP CRS <b>036°</b>	Rwy Ldg <b>11494</b>
Chan <b>44</b>		TDZE <b>640</b>
		Apt Elev <b>645</b>

(CLOSE PARALLEL)

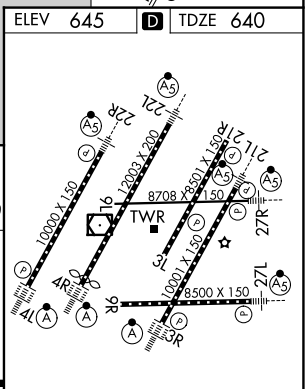
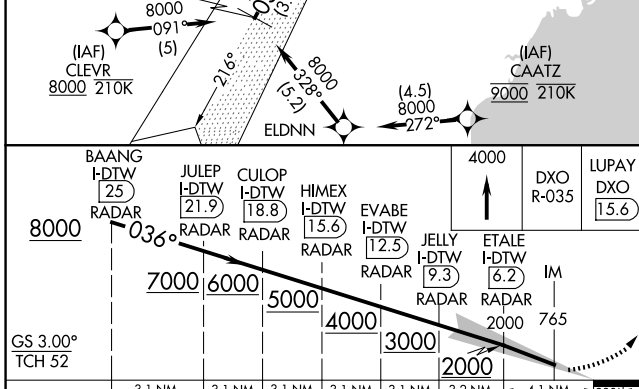
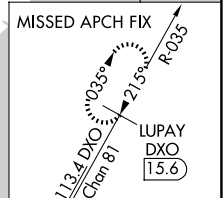
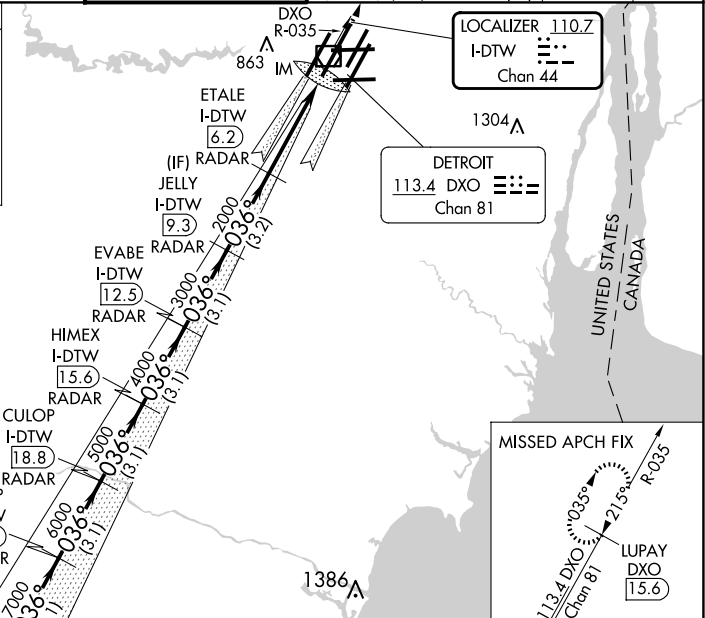
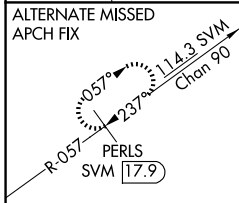
DETROIT METRO WAYNE COUNTY (DTW)

RNAV 1-GPS, DME or RADAR required. CLEVR, CAATZ and ELDNN: RNAV 1-DME/DME/IRU or GPS required. Aircraft not DME/DME/IRU or GPS equipped- RADAR required for procedure entry.

ALSF-2 MISSED APPROACH:  
Climb to 4000 on DXO  
VOR/DME R-035 to  
LUPAY/DXO VOR/DME  
15.6 DME and hold.

Simultaneous approach authorized. Use of FD or AP required during simultaneous operations. Dual VHF Comm required. See additional requirements on AAPP. Procedure NA when glide slope not available.

D-ATIS <b>133.675</b>	DETROIT APP CON <b>124.05 284.0</b>	METRO TOWER <b>128.125 317.725</b> <b>PRM 135.775</b>	GND CON <b>121.8 (NW) 119.45 (NE)</b> <b>132.725 (SW) 119.25 (SE)</b>	CLNC DEL <b>120.65</b>	CPDLC
--------------------------	--	---	---	---------------------------	-------



CATEGORY	A	B	C	D
S-ILS 4R	CAT II RA 104/12		100 DA 740	
S-ILS 4R	CAT III		RVR 06	

**CATEGORY II & III ILS - SPECIAL AIRCREW & AIRCRAFT CERTIFICATION REQUIRED**

TDZ/CL Rws 3R, 4L, 4R and 22R  
REIL Rws 3L, 9L, 9R and 21R  
HIRL all runways

EC-1, 25 DEC 2025 to 22 JAN 2026

EC-1, 25 DEC 2025 to 22 JAN 2026