

LOC/DME I-JKI <b>111.95</b>	APP CRS <b>216°</b>	Rwy Ldg TDZE <b>10000</b> <b>642</b>
Chan <b>56 (Y)</b>		Apt Elev <b>645</b>

# ILS PRM Z RWY 22R (CLOSE PARALLEL)

DETROIT METRO WAYNE COUNTY (DTW)

RNAV 1-GPS, HRRON and VALLI: RNAV 1-DME/DME/IRU or GPS required.  
 Aircraft not DME/DME/IRU or GPS equipped - RADAR required for procedure entry.

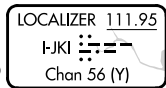
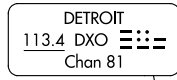
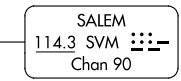
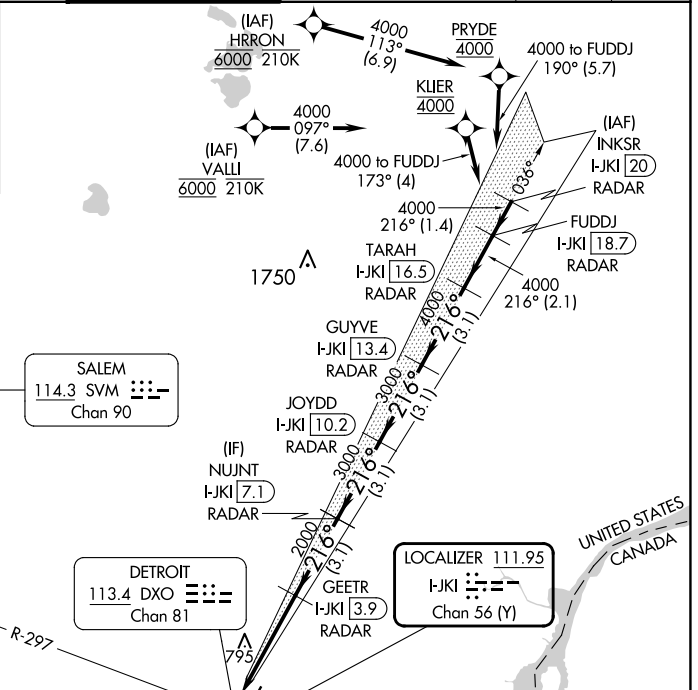
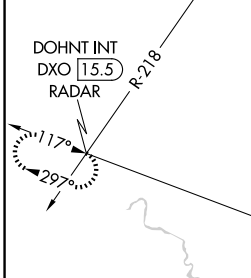
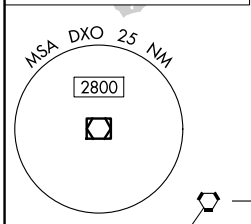
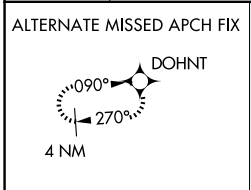
**Simultaneous approach authorized. Use of FD or AP required during simultaneous operations. Dual VHF Comm required. See additional requirements on AAUP.**

\*RVR 1800 authorized with use of FD or AP or HUD to DA.

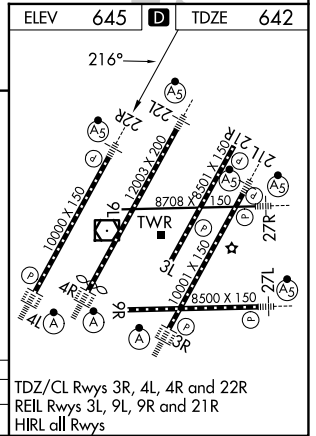


MISSED APPROACH: Climb to 1100 then climbing right turn to 4000 on DXO VOR/DME R-297 to DOHNT INT/DXO 15.5 DME/RADAR and hold.

D-ATIS <b>133.675</b>	DETROIT APP CON <b>124.05 284.0</b>	METRO TOWER <b>135.0 317.725</b> <b>PRM 127.05</b>	GND CON <b>121.8 (NW) 119.45 (NE)</b> <b>132.725 (SW) 119.25 (SE)</b>	CLNC DEL <b>120.65</b>	CPDLC
--------------------------	--	--	---	---------------------------	-------



1100	4000	DXO R-297	DOHNT INT	VGSi and ILS glidepath not coincident (VGSi Angle 3.00/TCH 71).			
I-JKI DME ANTENNA		GEETR I-JKI [3.9] RADAR	NUJNT I-JKI [7.1] RADAR	JOYDD I-JKI [10.2] RADAR	GUYVE I-JKI [13.4] RADAR	TARA I-JKI [16.5] RADAR	FUDDJ I-JKI [18.7] RADAR
2000		3000		3000		4000	
4.1 NM		3.1 NM		3.1 NM		2.1 NM	
CATEGORY	A		B		C		D
S-ILS 22R*	842/24		200 (200-1/2)				



EC-1, 25 DEC 2025 to 22 JAN 2026

EC-1, 25 DEC 2025 to 22 JAN 2026