

DETROIT, MICHIGAN

AL-119 (FAA)

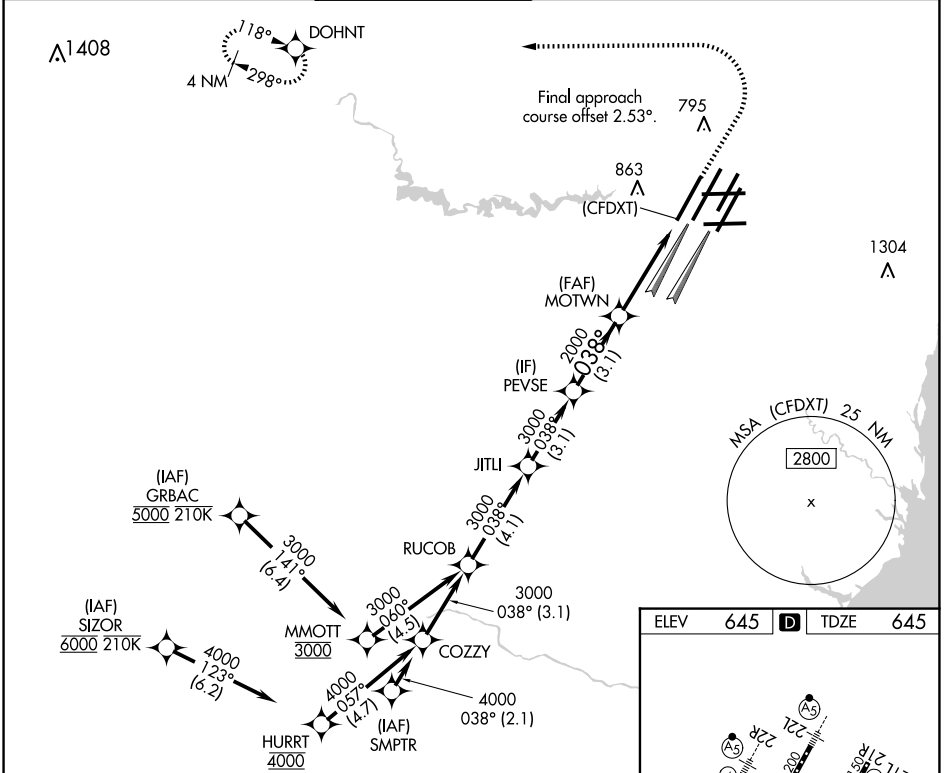
RNAV (GPS) PRM Y RWY 4L (CLOSE PARALLEL)

DETROIT METRO WAYNE COUNTY (DTW)

WAAS CH 82439 W04A	APP CRS 038°	Rwy Ldg 10000 TDZE 645 Apt Elev 645
--	------------------------	--

RNP APCH	<p>▼ Rwy 4L and 4R separated by 3000 feet centerline to centerline. For uncompensated Baro-VNAV systems, LNAV/VNAV NA below -19°C or above 54°C. Simultaneous approach authorized. Use of FD or AP required during simultaneous operations. Dual VHF comm required. See additional requirements on AAUP.</p>	ALSF-2 	MISSED APPROACH: Climb to 1100 then climbing left turn to 4000 direct DOHNT and hold.
----------	--	------------	--

D-ATIS 133.675	DETROIT APP CON 124.05 284.0	METRO TOWER 135.0 317.725 PRM 127.05	GND CON 121.8 (NW) 119.45 (NE) 132.725 (SW) 119.25 (SE)	CLNC DEL 120.65	CPDLC
--------------------------	--	--	---	---------------------------	-------

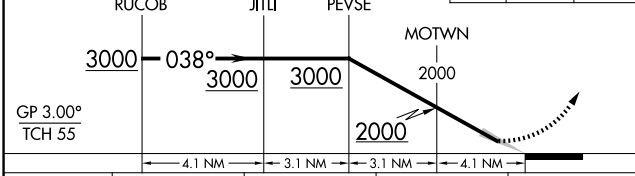


EC-1, 25 DEC 2025 to 22 JAN 2026

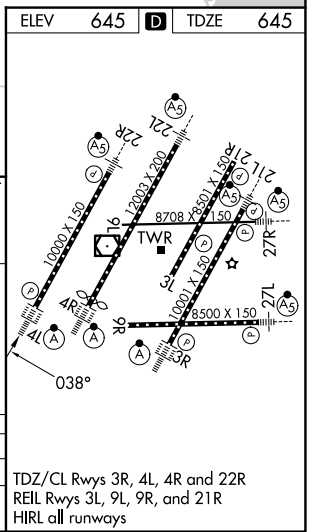
EC-1, 25 DEC 2025 to 22 JAN 2026

VGSI and RNAV glidepath not coincident (VGSI Angle 3.00/TCH 71).

1100	4000	DOHNT
------	------	-------



CATEGORY	A	B	C	D
LPV DA		895/24	250 (300-½)	
LNAV/VNAV DA		1068/45	423 (500-¾)	



DETROIT, MICHIGAN

42°13'N-83°21'W

DETROIT METRO WAYNE COUNTY (DTW)

Orig-B 07SEP23

RNAV (GPS) PRM Y RWY 4L (CLOSE PARALLEL)