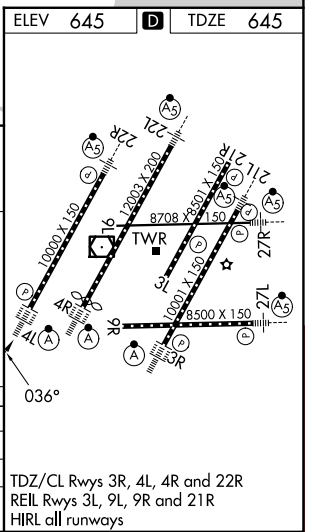
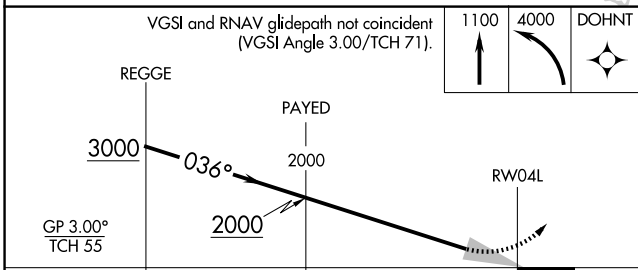
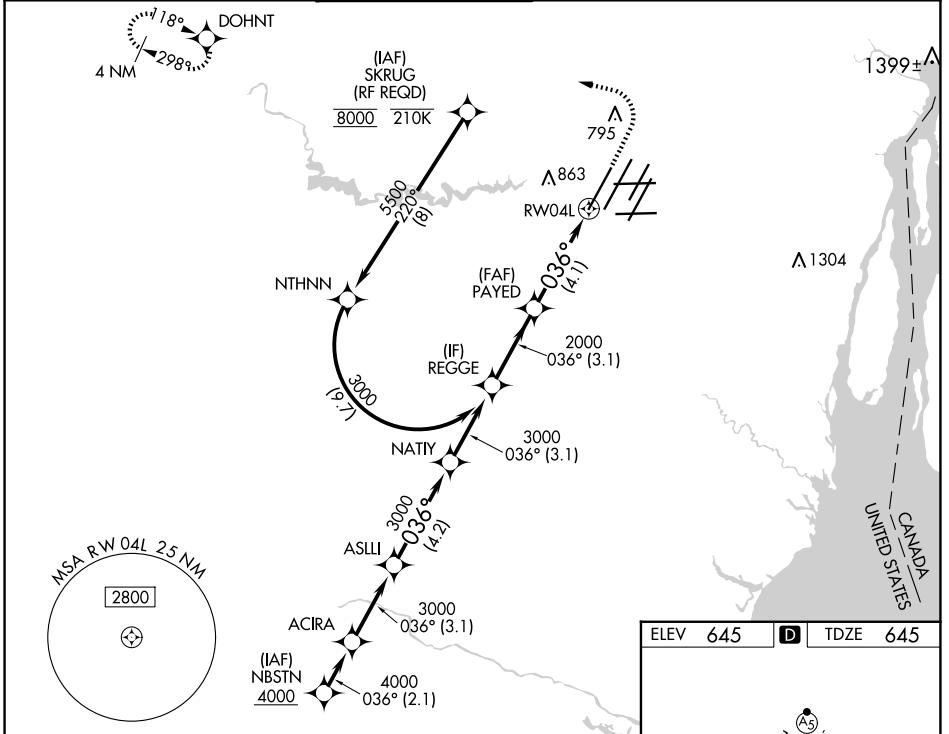


APP CRS	Rwy Ldg	10000
036°	TDZE	645
	Apt Elev	645

RNAV (RNP) W RWY 4L

DETROIT METRO WAYNE COUNTY (DTW)

RNP AR APCH.		ALSF-2		MISSED APPROACH: Climb to 1100 then climbing left turn to 4000 direct DOHNT and hold, continue climb-in-hold to 4000.	
<p>Simultaneous approach authorized. For uncompensated Baro-VNAV systems, procedure NA below -19°C or above 54°C. For inop ALS, increase RNP 0.30 all Cats visibility to RVR 6000.</p>		<p>GND CON</p> <p>121.8 (NW) 119.45 (NE)</p> <p>132.725 (SW) 119.25 (SE)</p>		<p>CLNC DEL</p> <p>120.65</p>	
D-ATIS	DETROIT APP CON	METRO TOWER			CPDLC
133.675	124.05 284.0	135.0 317.725			



CATEGORY	A	B	C	D
RNP 0.15 DA		970/26	325 (400-½)	
RNP 0.30 DA		1058/40	413 (500-¾)	

AUTHORIZATION REQUIRED

TDZ/CL Rwy 3R, 4L, 4R and 22R
 REIL Rwy 3L, 9L, 9R and 21R
 HIRL all runways

EC-1, 25 DEC 2025 to 22 JAN 2026

EC-1, 25 DEC 2025 to 22 JAN 2026