

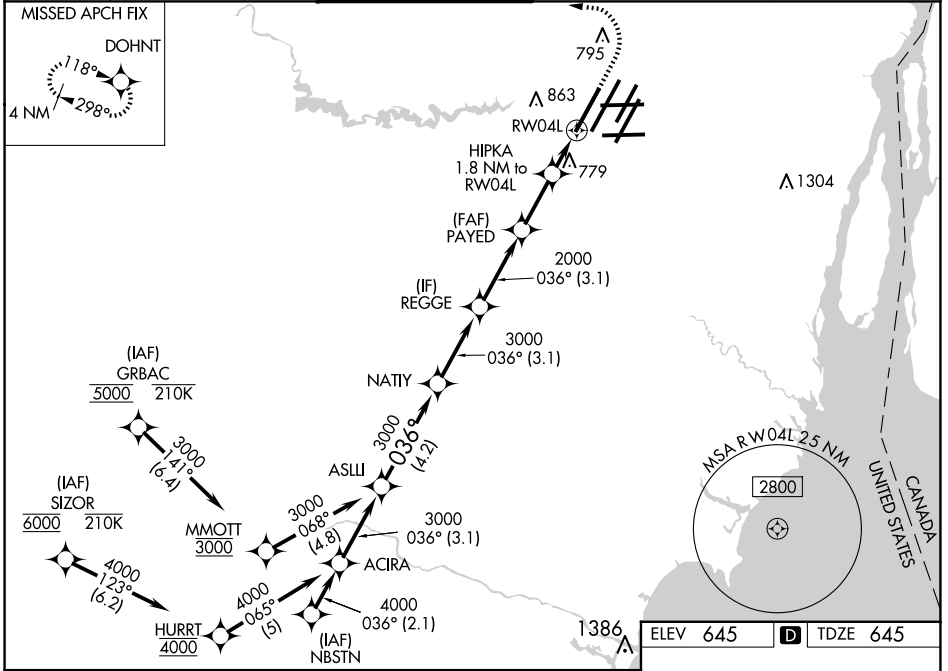
WAAS CH 82241 W04D	APP CRS 036°	Rwy Ldg 10000 TDZE 645 Apt Elev 645
--	------------------------	--

RNAV (GPS) Z RWY 4L

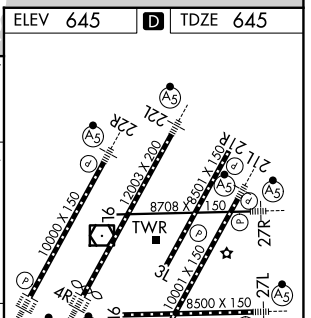
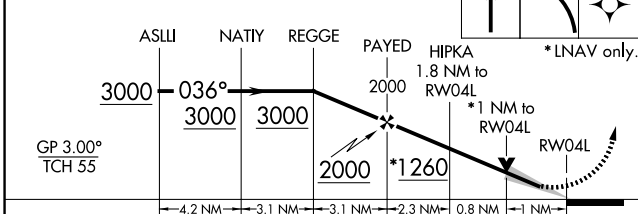
DETROIT METRO WAYNE COUNTY (DTW)

RNP APCH		GND CON		MISSED APPROACH: Climb to 1100 then climbing left turn to 4000 direct DOHNT and hold.	
Simultaneous approach authorized. Use of FD or AP required during simultaneous operations. LNAV procedure NA during simultaneous operations. For uncompensated Baro-VNAV systems, LNAV/VNAV NA below -19°C or above 54°C. For inop ALS, increase LNAV/VNAV all Cats visibility to RVR 6000.	ALSF-2				

D-ATIS 133.675	DETROIT APP CON 124.05 284.0	METRO TOWER 135.0 317.725	GND CON 121.8 (NW) 119.45 (NE) 132.725 (SW) 119.25 (SE)	CLNC DEL 120.65	CPDLC
--------------------------	--	-------------------------------------	---	---------------------------	-------



VGSI and RNAV glidepath not coincident (VGSI Angle 3.00/TCH 71).



CATEGORY	A	B	C	D
LPV DA	845/18		200 (200-½)	
LNAV/VNAV DA	1046/40		401 (500-¾)	
LNAV MDA	1040/24	395 (400-½)	1040/35	395 (400-⅝)
CIRCLING	1180-1	535 (600-1)	1180-1½ 535 (600-1½)	1240-2 595 (600-2)

TDZ/CL Rwys 3R, 4L, 4R and 22R
REL Rwys 3L, 9L, 9R and 21R
HIRL all runways

EC-1, 25 DEC 2025 to 22 JAN 2026

EC-1, 25 DEC 2025 to 22 JAN 2026