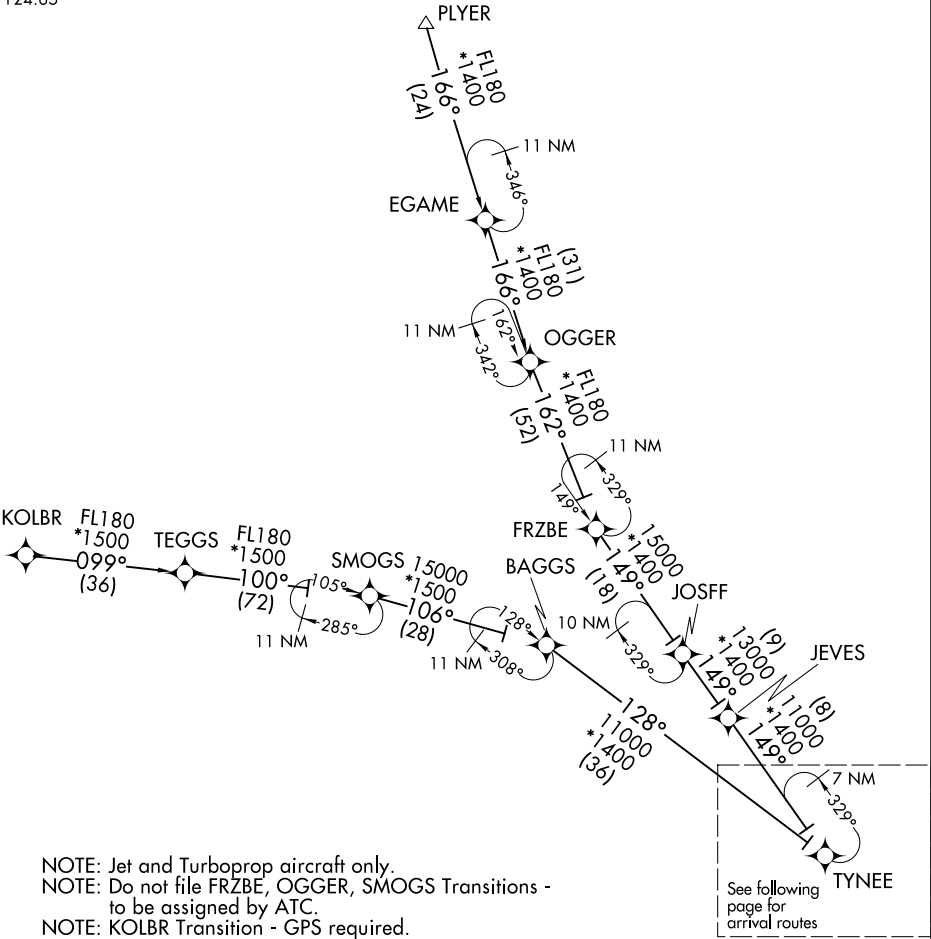


FORT MYERS APP CON ★  
134.425 306.2  
FMY ATIS  
123.725  
RSW D-ATIS  
124.65

RNAV 1 - DME/DME/IRU or GPS.  
From KOLBR: RNAV 1-GPS.

RADAR required.



- FRZBE TRANSITION (FRZBE.TYNEE4)  
KOLBR TRANSITION (KOLBR.TYNEE4)  
OGGER TRANSITION (OGGER.TYNEE4)  
PLYER TRANSITION (PLYER.TYNEE4)  
SMOGS TRANSITION (SMOGS.TYNEE4)

AL-154 (FAA)

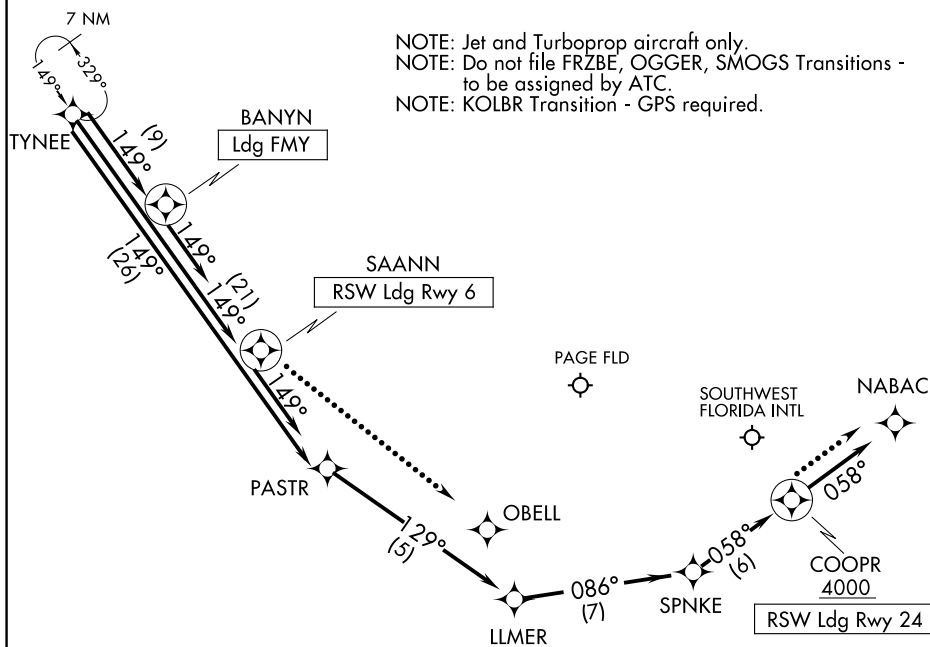
## TYNEE FOUR ARRIVAL (RNAV) Arrival Routes

FORT MYERS, FLORIDA

FORT MYERS APP CON ★  
134.425 306.2  
FMY ATIS  
123.725  
RSW D-ATIS  
124.65

RNAV 1 - DME/DME/IRU or GPS.  
From KOLBR: RNAV 1-GPS.

RADAR required.



NOTE: Chart not to scale.

## ARRIVAL ROUTE DESCRIPTION

LANDING RSW RUNWAY 6: From TYNEE on track 149° to SAANN, then on track 149°. Expect RADAR vectors to final approach course.

**LANDING RSW RUNWAY 24:** From TYNEE on track 149° to PASTR, then on track 129° to LLMER, then on track 086° to SPNKE, then on track 058° to cross COOPR at or above 4000, then on track 058°. Expect RADAR vectors to final approach course.

LANDING FMY: From TYNEE on track 149° to BANYN, then on track 149°. Expect RADAR vectors to final approach course.

LOST COMMUNICATIONS:

RSW LANDING RUNWAY 6: After SAANN, continue to OBELL, then conduct RWY 6 approach.

RSW LANDING RUNWAY 24: After COOPR, continue to NABAC, then conduct RWY 24 approach.

## TYNEE FOUR ARRIVAL (RNAV) Arrival Routes

FORT MYERS, FLORIDA

(TYNEE.TYNEE4) 12JUN25

SE-3, 25 DEC 2025 to 22 JAN 2026