

JOE POOL EIGHT DEPARTURE

FORT WORTH NAS JRB (CARSWELL FLD) (KNFW)

FORT WORTH, TEXAS

LONE STAR DEP CON

125.8 257.95

ATIS ★

351,675

CLNC DEL

126.4 254.325

GND CON

121.675 279.575

NAVY FORT WORTH TOWER ★

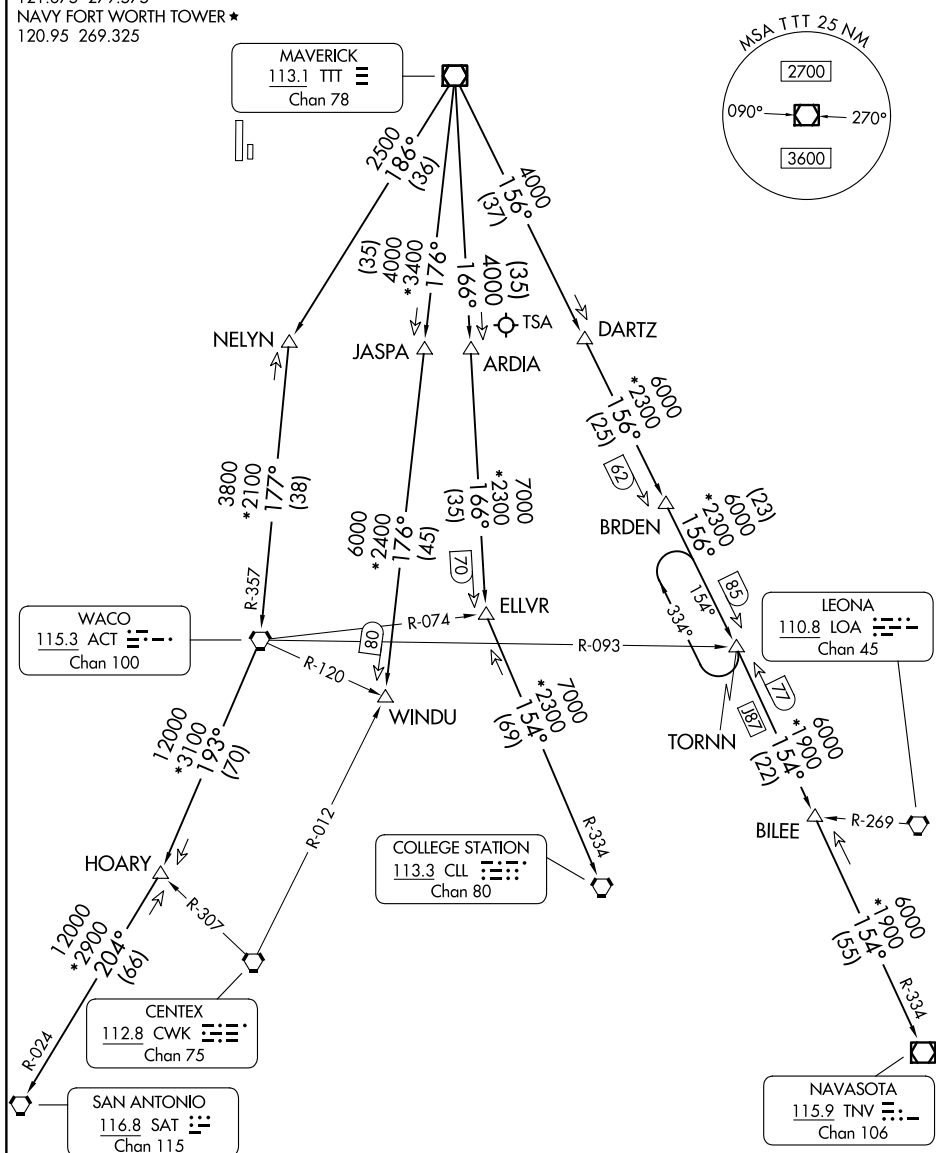
120.95 269.325

RADAR and DME required.

**TOP ALTITUDE:  
ASSIGNED BY ATC**

## TAKEOFF MINIMUMS

Refer to appropriate military service directives.



(CONTINUED ON FOLLOWING PAGE)

NOTE: Chart not to scale.

## JOE POOL EIGHT DEPARTURE

(JPOOL8.TTT) 07AUG25

FORT WORTH, TEXAS

FORT WORTH NAS JRB (CARSWELL FLD) (KNFW)

SC-2, 25 DEC 2025 to 22 JAN 2026

SC-2, 25 DEC 2025 to 22 JAN 2026

▼

DEPARTURE ROUTE DESCRIPTION

Climb on assigned heading for RADAR vectors to appropriate route. Maintain ATC assigned altitude.

COLLEGE STATION TRANSITION (JPOOL8.CLL): From over TTT VOR/DME on TTT R-166 to ELLVR, then on CLL R-334 to CLL VORTAC.

ELLVR TRANSITION (JPOOL8.ELLVR): From over TTT VOR/DME on TTT R-166 to ELLVR.

HOARY TRANSITION (JPOOL8.HOARY): From over TTT VOR/DME on TTT R-186 to NELYN, then on ACT R-357 to ACT VORTAC, then on ACT R-193 to HOARY.

NAVASOTA TRANSITION (JPOOL8.TNV): From over TTT VOR/DME on TTT R-156 to TORNN, then on TNV R-334 to TNV VOR/DME.

SAN ANTONIO TRANSITION (JPOOL8.SAT): From over TTT VOR/DME on TTT R-186 to NELYN, then on ACT R-357 to ACT VORTAC, then on ACT R-193 to HOARY, then on SAT R-024 to SAT VORTAC.

TORNN TRANSITION (JPOOL8.TORNN): From over TTT VOR/DME on TTT R-156 to TORNN.

WACO TRANSITION (JPOOL8.ACT): From over TTT VOR/DME on TTT R-186 to NELYN, then on ACT R-357 to ACT VORTAC.

WINDU TRANSITION (JPOOL8.WINDU): From over TTT VOR/DME on TTT R-176 to WINDU.

NOTE: COLLEGE STATION Transition: For piston and turboprop aircraft destined to HOU, EFD, GLS, or LBX. Also for all other aircraft types destined to all other Houston terminal area airports except IAH, CXO, DWH, T78 or 6R3.

NOTE: ELLVR Transition: For turbojet aircraft destined to HOU, EFD, GLS, or LBX.

NOTE: SAN ANTONIO Transition: For aircraft overflying Centex and San Antonio.

NOTE: TORNN Transition: Only for aircraft destined IAH, CXO, DWH, T78 or 6R3.

NOTE: WACO Transition: For aircraft inbound to Waco or Gray terminal area airports.

NOTE: WINDU Transition: For aircraft inbound to Austin or San Antonio terminal area.