


LUFKIN FOUR DEPARTURE

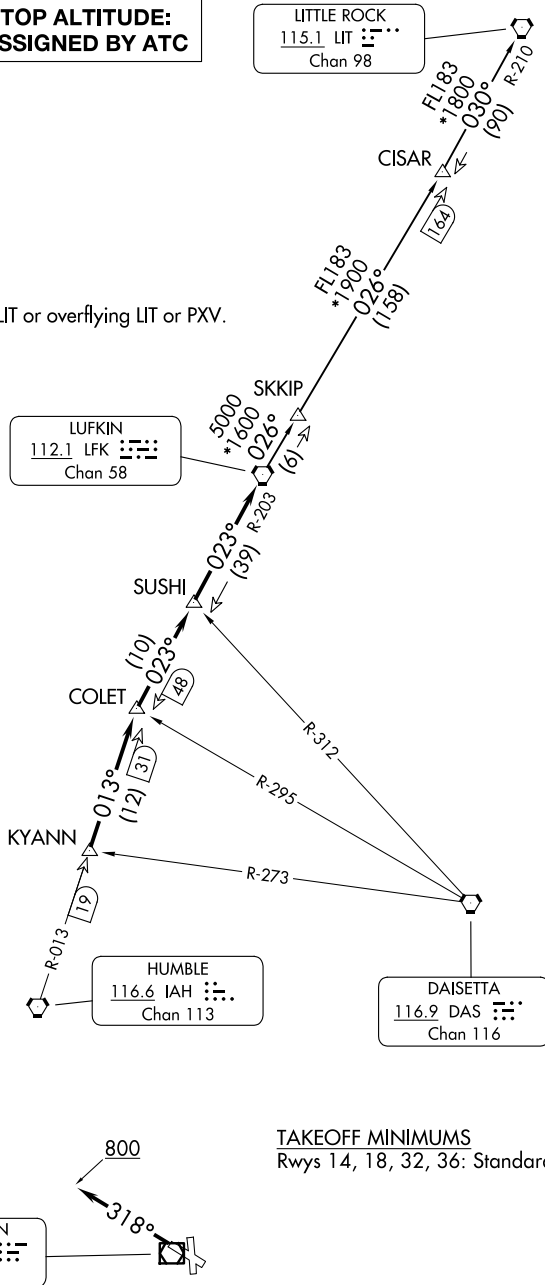
HOUSTON DEP CON
134.45 284.0
ASOS
123.95
CLNC DEL (When twr closed)
135.35
GND CON
118.625
GALVESTON TOWER ★
120.575 (CTAF)

**TOP ALTITUDE:
ASSIGNED BY ATC**

LITTLE ROCK
115.1 LIT 
Chan 98

RADAR and DME required.

NOTE: For aircraft destined LIT or overflying LIT or PXV.



TAKEOFF MINIMUMS
Rwys 14, 18, 32, 36: Standard.

NOTE: Chart not to scale.

(CONTINUED ON FOLLOWING PAGE)

LUFKIN FOUR DEPARTURE

(LFK4.LFK) 27NOV25

GALVESTON, TEXAS

SCHOL'S INTL AT GALVESTON (GLS)

SC-5, 25 DEC 2025 to 22 JAN 2026

LUFKIN FOUR DEPARTURE



DEPARTURE ROUTE DESCRIPTION

TAKEOFF RUNWAYS 14, 18, 36: When entering controlled airspace, climb on assigned heading for RADAR vectors to KYANN INT. Maintain ATC assigned altitude. Expect filed altitude 10 minutes after departure, thence. . .

TAKEOFF RUNWAY 32: Climb on heading 318° to 800 before turning. When entering controlled airspace, climb on assigned heading for RADAR vectors to KYANN INT. Maintain ATC assigned altitude. Expect filed altitude 10 minutes after departure, thence. . .

. . .on IAH R-013 to COLET INT, then on depicted route to LFK VORTAC.

LITTLE ROCK TRANSITION (LFK4.LIT): From over LFK VORTAC on LFK R-026 to CISAR, then on LIT R-210 to LIT VORTAC.

SC-5, 25 DEC 2025 to 22 JAN 2026

SC-5, 25 DEC 2025 to 22 JAN 2026